

1

2

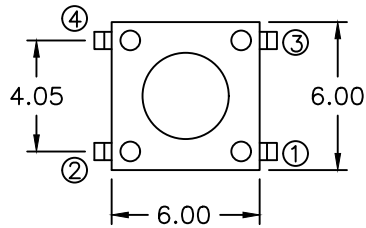
3

4

5

COMPONENT SPECIFICATION

USE OR REPRODUCTION OF THIS DRAWING FOR THE PURPOSE OF MANUFACTURING THIS ARTICLE OR ANY ARTICLES SHOWN FOR ANY PURPOSE IS STRICTLY PROHIBITED WITHOUT WRITTEN PERMISSION FROM SENIOR INDUSTRIES, INC.



FIRST 'X' IN PART NUMBER DENOTES MOUNTING OPTION.

'I' - INSERTABLE 'L' - SMT L PAD

SECOND 'X' IN PART NUMBER DENOTES ACTUATOR HEIGHT.

'A' - DIM 'H' = 4.3mm 'B' - DIM 'H' = 5.0mm 'G' - DIM 'H' = 6.6mm

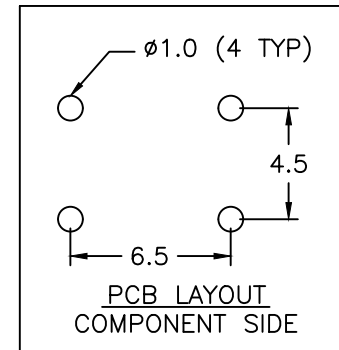
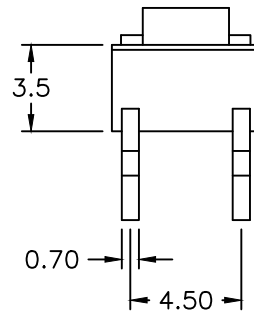
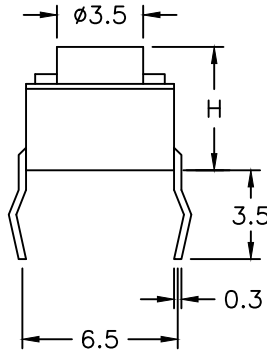
'C' - DIM 'H' = 9.5mm 'D' - DIM 'H' = 13mm

'E' - DIM 'H' = 7.0mm 'F' - DIM 'H' = 8.5mm

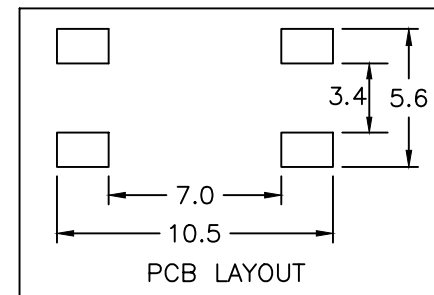
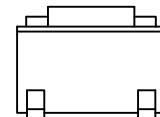
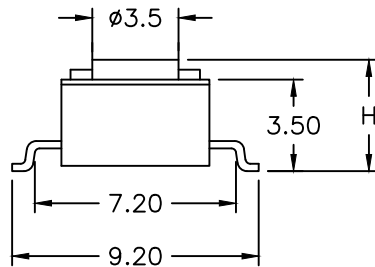
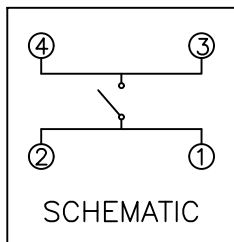
THIRD 'X' IN PART NUMBER DENOTES OPERATING FORCE.

'A' - 130 ± 30 gf; 'B' - 160 ± 30 gf; 'C' - 250 ± 50 gf

INSERTABLE MOUNTING OPTION



SMT L PAD MOUNTING OPTION



RoHS COMPLIANT



SENIOR INDUSTRIES, INC.

DESIGNED:			SYM.	DATE:	DESCRIPTION OF REVISIONS:	DRAWN:	ARPD:	TOLERANCE:	PART NO:	SRT-KRS-0600-XXX
DRAWN:	RB	08/23/00	▲	11.07.07	T/R note; G opt-Actuator height; Dome mat to Brass	GAT	JF	TO 1 DECIMAL PLACE: ±.3	TITLE:	TACT SWITCH
CHECKED:	GAT	03/20/09	▲	11.28.07	Corr'd Hous & Act material to Nylon 66, UL94V-0	GAT	JF			
APPROVED:	JF	03/20/09	▲	03.20.09	Added reflow soldering temp. @ 260°C for 10 sec.	GAT	JF	TO 2 DECIMAL PLACES: ±.12	SHEET:	1 OF 2
			▲	10.15.12	Corrected electrical and operating temp specification	MAW	JF	AS ANGLES: ±1/2°		
			▲	06.17.20	Corrected electrical and operating temp specification	MAW	JF			
3RD ANGLE		UNIT:	mm	SCALE:	4:1	REV:	L			

1

2

3

4

5

COMPONENT
SPECIFICATIONUSE OR REPRODUCTION OF THIS DRAWING FOR THE PURPOSE OF MANUFACTURING THIS
ARTICLE OR ANY ARTICLES SHOWN FOR ANY PURPOSE IS STRICTLY PROHIBITED WITHOUT
WRITTEN PERMISSION FROM SENIOR INDUSTRIES, INC.SPECIFICATIONSELECTRICAL

CONTACT RATING: 50mA @ 12 VDC
 CONTACT RESISTANCE: 100 MILLIOHMS MAX.
 INSULATION RESISTANCE: 100 MEGOHMS MIN. AT 100 VDC
 DIELECTRIC STRENGTH: 250 VAC FOR 1 MINUTE

MECHANICAL

OPERATING LIFE: 100,000 CYCLES MIN.
 TRAVEL: 0.25 ±0.1 mm

ENVIRONMENTAL

OPERATING TEMPERATURE: -35°C TO +85°C
 STORAGE TEMPERATURE: -35°C TO +85°C
 SMT TYPE PART SHALL WITHSTAND REFLOW SOLDERING TEMPERATURE
 OF 260°C FOR 10 SECONDS.
 REACH COMPLIANT

MATERIAL

HOUSING: PPA, BLACK
 ACTUATOR: PPA, BLACK
 TERMINALS: 0.3MM BRASS, SILVER PLATED
 CONTACT: SUS, SILVER PLATED

NOTE: SURFACE MOUNT "L" PAD PARTS TO BE SUPPLIED
 IN TAPE & REEL PACKAGING, 1000 PCS PER REEL,
 ACTUATOR FACING UP.

RoHS COMPLIANT

**SENIOR
INDUSTRIES, INC.**

DESIGNED:			SYM.	DATE:	DESCRIPTION OF REVISIONS:	DRAWN:	APPD:	TOLERANCE:	PART NO:	SRT-KRS-0600-XXX	
DRAWN:	RB	08/23/00	△	11.07.07	T/R note; G opt-Actuator height; Dome mat to Brass	GAT	JF	TO 1 DECIMAL PLACE: ±.3	TITLE:	TACT SWITCH	
CHECKED:	GAT	03/20/09	△	11.28.07	Corr'd Hous & Act material to Nylon 66, UL94V-0	GAT	JF				
APPROVED:	JF	03/20/09	△	03.20.09	Added reflow soldering temp. @ 260°C for 10 sec.	GAT	JF	TO 2 DECIMAL PLACES: ±.12	SHEET:	2 OF 2	
			△	10.15.12	Corrected electrical and operating temp specification	MAW	JF				
			△	06.17.20	Corrected electrical and operating temp specification	MAW	JF	AS ANGLES: ±1/2'			
3RD ANGLE			UNIT:	mm	SCALE:	4:1	REV:	L			

A

B

C