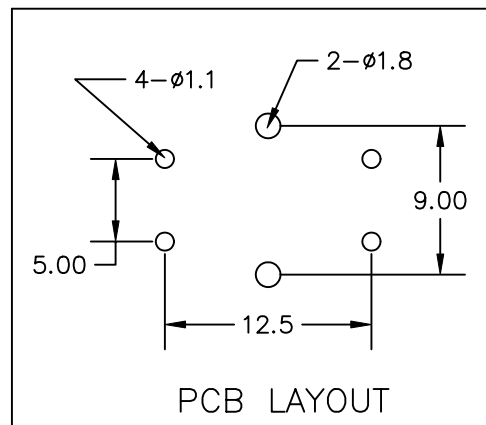
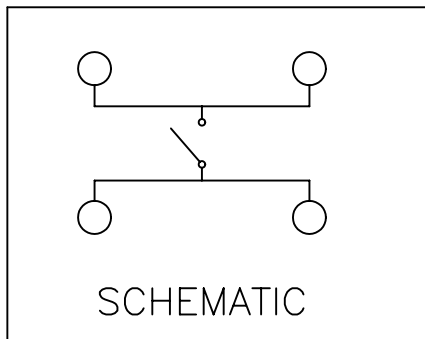
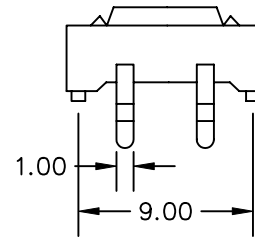
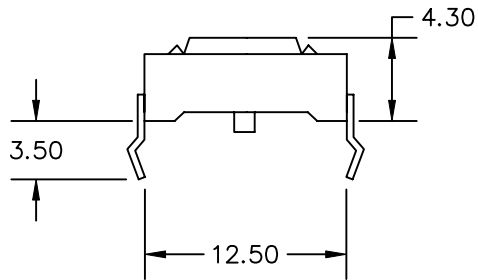
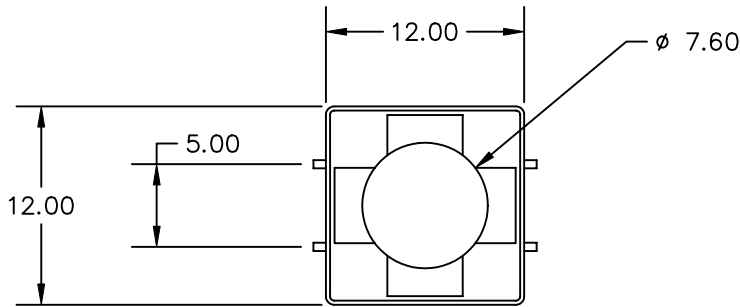


USE OR REPRODUCTION OF THIS DRAWING FOR THE PURPOSE OF MANUFACTURING THIS ARTICLE OR ANY ARTICLES SHOWN FOR ANY PURPOSE IS STRICTLY PROHIBITED WITHOUT WRITTEN PERMISSION FROM SENIOR INDUSTRIES, INC.

CUSTOMER SPECIFICATION DRAWING



SENIOR INDUSTRIES, INC.

TITLE:

TACT SWITCH

PART NO:

SRT-KRS-1243

DATE:

05/22/01

DRAWN:

RB

REV:

A

SCALE:

N/A

SHEET:

1 OF 2

USE OR REPRODUCTION OF THIS DRAWING FOR THE PURPOSE OF MANUFACTURING THIS ARTICLE OR ANY ARTICLES SHOWN FOR ANY PURPOSE IS STRICTLY PROHIBITED WITHOUT WRITTEN PERMISSION FROM SENIOR INDUSTRIES, INC.

CUSTOMER
SPECIFICATION
DRAWING

SPECIFICATIONS

ELECTRICAL

CONTACT RATING: 50mA AT 12 VDC
CONTACT RESISTANCE: 100 MILLIOHMS MAX.
INSULATION RESISTANCE: 100 MEGOHMS MIN. AT 500 VDC
DIELECTRIC STRENGTH: 250 VAC FOR 1 MINUTE

MECHANICAL

OPERATING LIFE: 100,000 CYCLES MIN.
TRAVEL: 0.25

ENVIRONMENTAL

OPERATING TEMPERATURE: -20°C TO +70°C
STORAGE TEMPERATURE: -30°C TO +80°C

MATERIAL

HOUSING: NYLON 4/6 G30, UL94V-0, BLACK
ACTUATOR: NYLON 4/6 G30, UL94V-0, BLACK
TERMINALS: BRASS, SILVER PLATED
CONTACT: STAINLESS STEEL



**SENIOR
INDUSTRIES, INC.**

TITLE:

TACT SWITCH

PART NO:

SRT-KRS-1243

DATE:

05/22/01

DRAWN:

RB

REV:

A

SCALE:

N/A

SHEET:

2 OF 2