

1

2

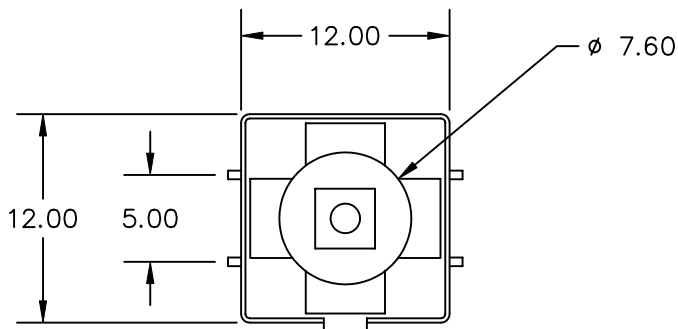
3

4

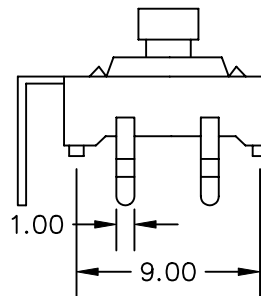
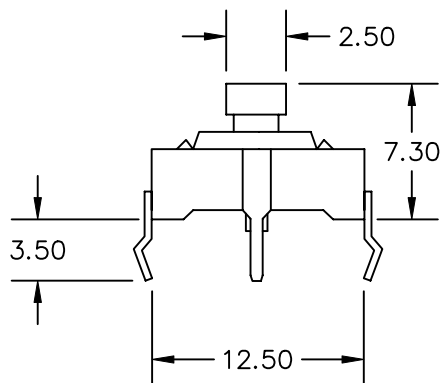
COMPONENT SPECIFICATION

USE OR REPRODUCTION OF THIS DRAWING FOR THE PURPOSE OF MANUFACTURING THIS ARTICLE OR ANY ARTICLES SHOWN FOR ANY PURPOSE IS STRICTLY PROHIBITED WITHOUT WRITTEN PERMISSION FROM SENIOR INDUSTRIES, INC.

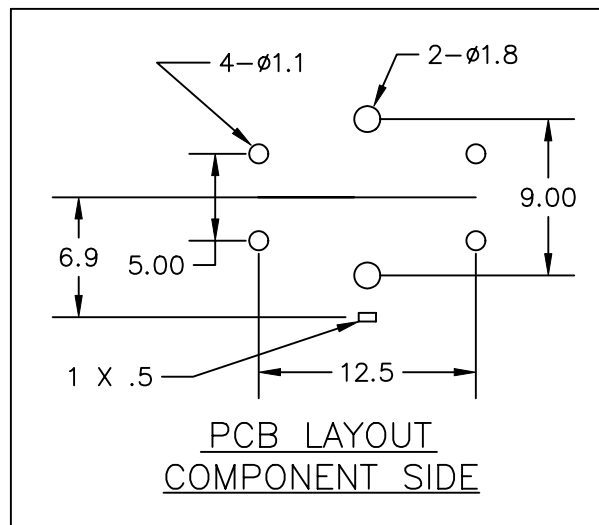
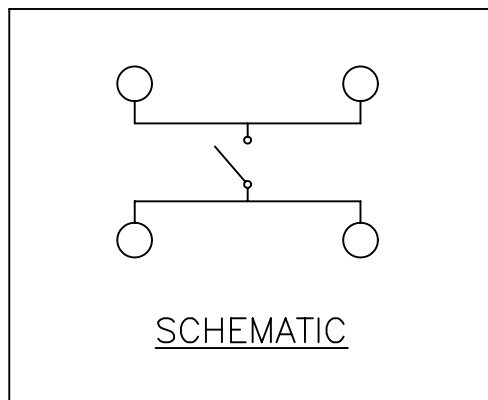
A



B



C



D

E

DESIGNED:			SYM.	DATE:	DESCRIPTION OF REVISIONS:	DRAWN	APPD.	
DRAWN:	RB	05/22/01	▲	05.22.01	NEW	RB		
CHECKED:			▲	05.11.05	New Index, Actuation Force: 250 gf; Ch'd UL rating to UL94HB.	GAT		
APPROVED:			▲					
			▲					
3RD ANGLE			UNIT:		mm	SCALE:	REV.	B



SENIOR INDUSTRIES, INC.

TOLERANCE:

TO 1 DECIMAL PLACE:	±.3
TO 2 DECIMAL PLACES:	±.13
AS ANGLES:	±1/2°

SHEET:

PART NO: SRT-KRS-1273G

TITLE: TACT SWITCH

1 OF 2

1

2

3

4

COMPONENT
SPECIFICATIONUSE OR REPRODUCTION OF THIS DRAWING FOR THE PURPOSE OF MANUFACTURING THIS
ARTICLE OR ANY ARTICLES SHOWN FOR ANY PURPOSE IS STRICTLY PROHIBITED WITHOUT
WRITTEN PERMISSION FROM SENIOR INDUSTRIES, INC.SPECIFICATIONSELECTRICAL

CONTACT RATING:	50mA AT 12 VDC
CONTACT RESISTANCE:	100 MILLIOHMS MAX.
INSULATION RESISTANCE:	100 MEGOHMS MIN. AT 500 VDC
DIELECTRIC STRENGTH:	250 VAC FOR 1 MINUTE

MECHANICAL

OPERATING LIFE:	100,000 CYCLES MIN.
TRAVEL:	0.25mm
ACTUATION FORCE:	250gf

ENVIRONMENTAL

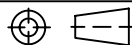
OPERATING TEMPERATURE:	-20°C TO +70°C
STORAGE TEMPERATURE:	-30°C TO +80°C

MATERIAL

HOUSING:	NYLON 4/6 G30, UL94HB, BLACK
ACTUATOR:	NYLON 4/6 G30, UL94HB, BLACK
TERMINALS:	BRASS, SILVER PLATED
CONTACT:	STAINLESS STEEL

DESIGNED:			SYM.	DATE:	DESCRIPTION OF REVISIONS:	DRAWN	APPD.
DRAWN:	RB	05/22/01	△	05.22.01	NEW	RB	
CHECKED:			△	05.11.05	New Index, Actuation Force: 250 gf; Ch'd UL rating to UL94HB.	GAT	
APPROVED:			△				
			△				

3RD ANGLE



UNIT:

mm

SCALE:

REV.

B


**SENIOR
INDUSTRIES, INC.**

TOLERANCE:

TO 1 DECIMAL PLACE: ±

TO 2 DECIMAL PLACES: ±

AS ANGLES: ± °

SHEET:

PART NO: SRT-KRS-1273G

TITLE:

TACT SWITCH

2 OF 2