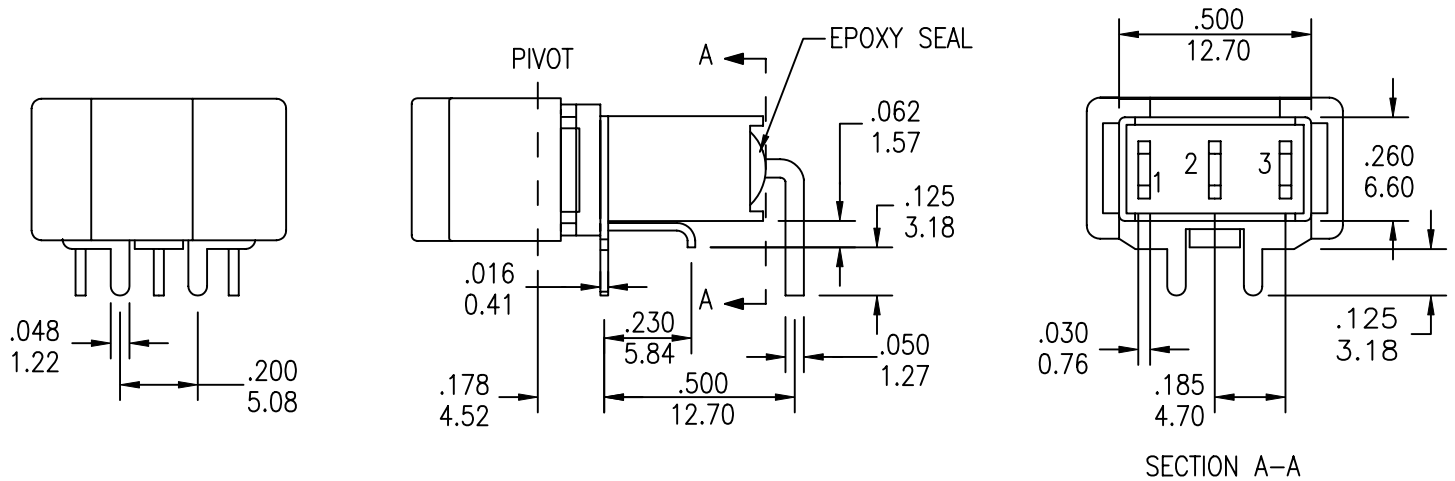


1

2

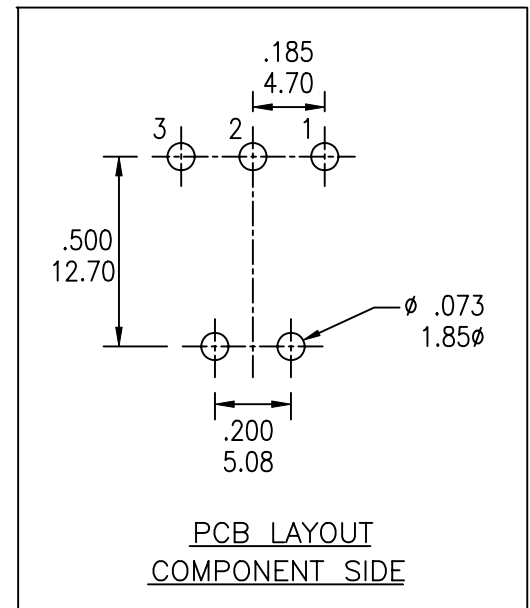
3

4

COMPONENT  
SPECIFICATIONUSE OR REPRODUCTION OF THIS DRAWING FOR THE PURPOSE OF MANUFACTURING THIS  
ARTICLE OR ANY ARTICLES SHOWN FOR ANY PURPOSE IS STRICTLY PROHIBITED WITHOUT  
WRITTEN PERMISSION FROM SENIOR INDUSTRIES, INC.

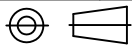
SECTION A-A

MODEL NO.	SWITCHING POSITION		
8015P	ON	NONE	ON
8015PA	ON	NONE	MOM
8016P	ON	OFF	ON
8016PA	MOM	OFF	MOM
8016PB	ON	OFF	MOM
CONN. TERMS	2-3	OPEN	2-1
SCHEMATIC	SPDT  2 Comm.		



DESIGNED:			SYM.	DATE	DESCRIPTION OF REVISIONS	DRAWN	APPD.
DRAWN:	GAT	10/23/07		10.23.07	NEW	GAT	JF
CHECKED:	GAT	10/23/07		.	.		
APPROVED:	JF	10/23/07		.	.		

3RD ANGLE



UNIT:

IN/mm

SCALE:

2:1

REV.

A

TOLERANCE:

TO 1 DECIMAL PLACE:  $\pm .2$ TO 2 DECIMAL PLACES:  $\pm .10$ 

AS ANGLES:

SHEET:

PART NO:

SEE CHART

TITLE: SSPP 8015P/8016P SEALED  
ROCKER/PADDLE SWITCHES

1 OF 5

1

2

3

4

COMPONENT  
SPECIFICATIONUSE OR REPRODUCTION OF THIS DRAWING FOR THE PURPOSE OF MANUFACTURING THIS  
ARTICLE OR ANY ARTICLES SHOWN FOR ANY PURPOSE IS STRICTLY PROHIBITED WITHOUT  
WRITTEN PERMISSION FROM SENIOR INDUSTRIES, INC.SPECIFICATIONSELECTRICAL

CONTACT RATING:

SILVER: 5A @ 120 VAC OR 28 VDC, 2A @ 250 VAC

GOLD: 0.4 VA MAX. @ 20 V MAX. (AC OR DC)

CONTACT RESISTANCE: 10 MILLIOHMS MAX.

INSULATION RESISTANCE: 1,000 MEGOHMS MIN. AT 500 VDC

DIELECTRIC STRENGTH: 1,000 VRMS

MECHANICAL

LIFE: 30,000 CYCLES

ENVIRONMENTAL

OPERATING TEMPERATURE: -30°C TO +85°C

MATERIAL

CASE AND BUSHING: GLASS FILLED NYLON 6/6, UL94V-0

ACTUATOR: NYLON, BLACK STD. INTERNAL O-RING SEAL STD.

FRAME: SPRING STEEL, BLACK STD.

SWITCH SUPPORT: BRASS OR STEEL, TIN PLATED

ACTUATOR PIVOT AND MOUNTING BRACKET: NYLON

ACTUATOR PIVOT RETAINER: STAINLESS STEEL

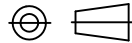
CONTACT/TERMINALS: COPPER ALLOY, SILVER OR GOLD PLATED

PART NUMBER BUILDER:

SERIES	MODEL NO.	ACTUATOR	ACTUATOR COLOR	TERMINATION	CONTACT PLATING	SEAL
SSPR -	<input type="text"/>	- <input type="text"/>	<input type="text"/>	<input type="text"/>	<input type="text"/>	<input type="text"/>
	8015P	R11 (.531" ROCKER)	1 - BLUE	C (PC MOUNT)	Q (SILVER)	BLANK
	8015PA	R12 (.362" SMALL ROCKER)	2 - RED		R (GOLD)	E (EPOXY)
	8016P	R15 (.906" LARGE ROCKER)	3 - BLACK (std)			
	8016PA	P13 (.740" PADDLE)	4 - BROWN			
	8016PB	P16 (1.174" LARGE PADDLE)	5 - GREEN			
		P17 (.644" SMALL PADDLE)	6 - WHITE			
		P18 (.644" ROUND PADDLE)	7 - GRAY			
		P19 (.894" ROUND LARGE PADDLE)	8 - ORANGE			
			9 - YELLOW			
			0 - VIOLET			

DESIGNED:			SYM.	DATE	DESCRIPTION OF REVISIONS	DRAWN	APPD.
DRAWN:	GAT	10/23/07		10.23.07	NEW	GAT	JF
CHECKED:	GAT	10/23/07		.	.		
APPROVED:	JF	10/23/07		.	.		

3RD ANGLE



UNIT:

IN/mm

SCALE:

2:1

REV.

A


**SENIOR  
INDUSTRIES, INC.**

TOLERANCE:

TO 1 DECIMAL PLACE: ±

TO 2 DECIMAL PLACES: ±

AS ANGLES:

SHEET:

PART NO:

SEE CHART

TITLE:

SSPR 8015P/8016P SEALED  
ROCKER/PADDLE SWITCHES

2 OF 5

1

2

3

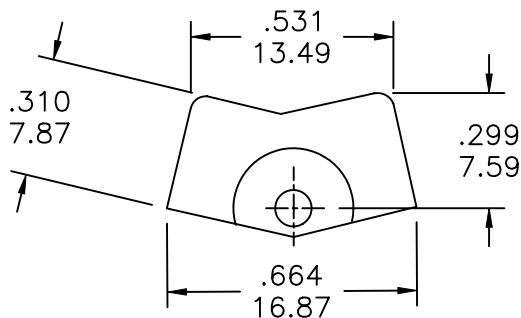
4

COMPONENT SPECIFICATION

USE OR REPRODUCTION OF THIS DRAWING FOR THE PURPOSE OF MANUFACTURING THIS ARTICLE OR ANY ARTICLES SHOWN FOR ANY PURPOSE IS STRICTLY PROHIBITED WITHOUT WRITTEN PERMISSION FROM SENIOR INDUSTRIES, INC.

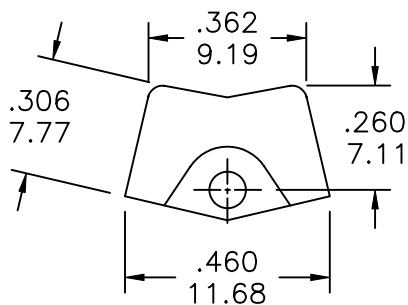
A

ACTUATOR OPTIONS



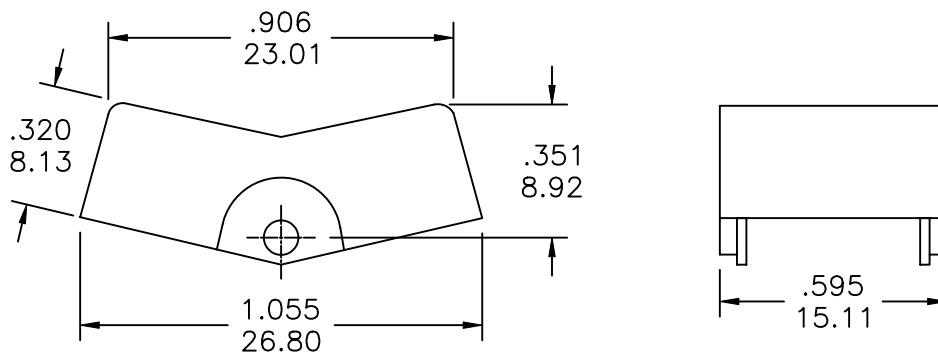
R11

B



R12

C



R15

D

E

DESIGNED:			SYM.	DATE	DESCRIPTION OF REVISIONS	DRAWN	APPD.
DRAWN:	GAT	10/23/07	▲	10.23.07	NEW	GAT	JF
CHECKED:	GAT	10/23/07	▲	. .			
APPROVED:	JF	10/23/07	▲	. .			

3RD ANGLE		UNIT:	IN/mm	SCALE:	2:1	REV.	A
-----------	--	-------	-------	--------	-----	------	---



TOLERANCE:	PART NO:
TO 1 DECIMAL PLACE: ± .2	SEE CHART
TO 2 DECIMAL PLACES: ± .10	TITLE: SSPP 8015P/8016P SEALED ROCKER/PADDLE SWITCHES
AS ANGLES:	
SHEET:	3 OF 5

1

2

3

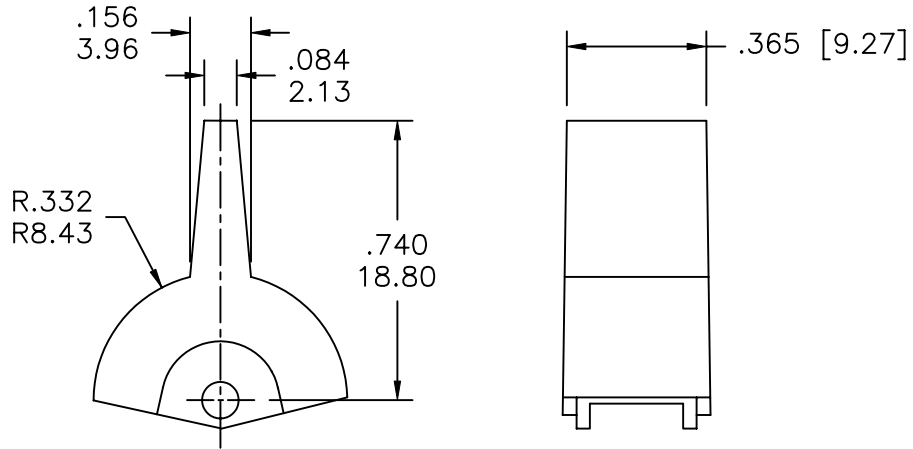
4

COMPONENT SPECIFICATION

USE OR REPRODUCTION OF THIS DRAWING FOR THE PURPOSE OF MANUFACTURING THIS ARTICLE OR ANY ARTICLES SHOWN FOR ANY PURPOSE IS STRICTLY PROHIBITED WITHOUT WRITTEN PERMISSION FROM SENIOR INDUSTRIES, INC.

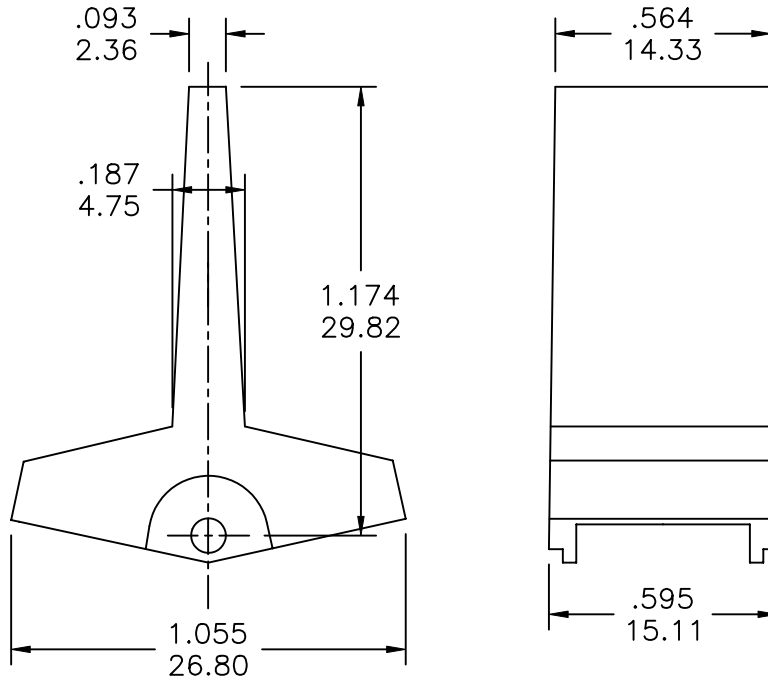
A

ACTUATOR OPTIONS



P13

C



P16

D

E

DESIGNED:			SYM.	DATE	DESCRIPTION OF REVISIONS	DRAWN	APPD.
DRAWN:	GAT	10/23/07	▲	10.23.07	NEW	GAT	JF
CHECKED:	GAT	10/23/07	▲	. . .			
APPROVED:	JF	10/23/07	▲	. . .			

3RD ANGLE		UNIT:	IN/mm	SCALE:	2:1	REV.	A
-----------	--	-------	-------	--------	-----	------	---

	TOLERANCE:	PART NO:	SEE CHART
	TO 1 DECIMAL PLACE:	± .2	TITLE: SSPR 8015P/8016P SEALED ROCKER/PADDLE SWITCHES
	TO 2 DECIMAL PLACES:	±.10	
	AS ANGLES:		SHEET:

1

2

3

4

COMPONENT SPECIFICATION

USE OR REPRODUCTION OF THIS DRAWING FOR THE PURPOSE OF MANUFACTURING THIS ARTICLE OR ANY ARTICLES SHOWN FOR ANY PURPOSE IS STRICTLY PROHIBITED WITHOUT WRITTEN PERMISSION FROM SENIOR INDUSTRIES, INC.

ACTUATOR OPTIONS

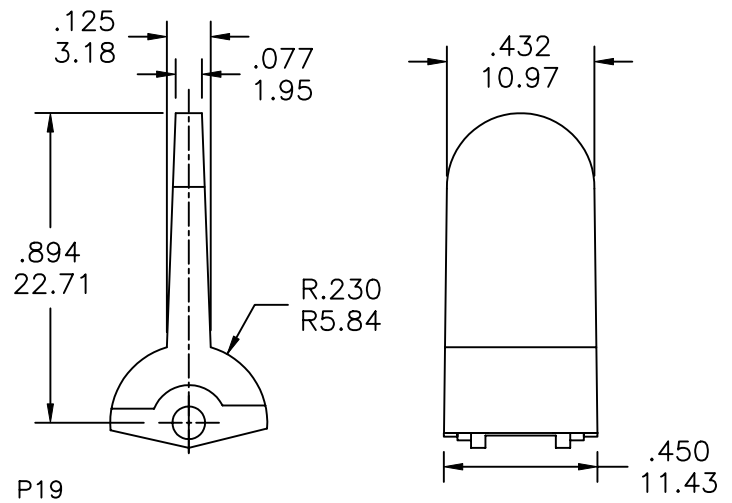
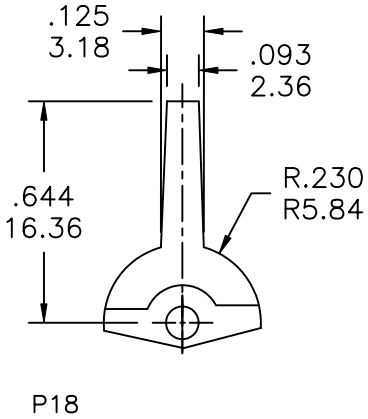
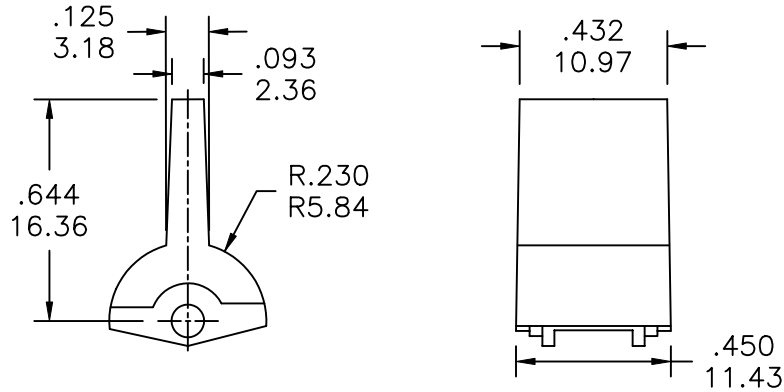
A

B

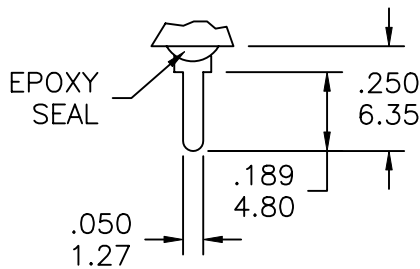
C

D

E



TERMINATION OPTIONS



C THK. .030 [0.76] PC MOUNT

DESIGNED:			SYM.	DATE	DESCRIPTION OF REVISIONS	DRAWN	APPD.
DRAWN:	GAT	10/23/07	▲	10.23.07	NEW	GAT	JF
CHECKED:	GAT	10/23/07	▲	.			
APPROVED:	JF	10/23/07	▲	.			

3RD ANGLE		UNIT:	IN/mm	SCALE:	2:1	REV.	A
-----------	--	-------	-------	--------	-----	------	---



TOLERANCE:	PART NO:
TO 1 DECIMAL PLACE: ± .2	SEE CHART
TO 2 DECIMAL PLACES: ± .10	TITLE:
AS ANGLES:	SSPR 8015P/8016P SEALED ROCKER/PADDLE SWITCHES
SHEET:	5 OF 5