

1

2

3

4

COMPONENT SPECIFICATION

USE OR REPRODUCTION OF THIS DRAWING FOR THE PURPOSE OF MANUFACTURING THIS ARTICLE OR ANY ARTICLES SHOWN FOR ANY PURPOSE IS STRICTLY PROHIBITED WITHOUT WRITTEN PERMISSION FROM SENIOR INDUSTRIES, INC.

MODEL NO.	SWITCHING POSITION		
8017P	ON	NONE	ON
8017PA	ON	NONE	MOM
8018P	ON	OFF	ON
8018PA	MOM	OFF	MOM
8018PB	ON	OFF	MOM
CONN. TERMS	2-3 5-6	OPEN	2-1 5-4
SCHEMATIC			

PCB LAYOUT
COMPONENT SIDE

DESIGNED:			SYM.	DATE	DESCRIPTION OF REVISIONS	DRAWN	APPD.
DRAWN:	GAT	10/23/07	△	10.23.07	NEW	GAT	JF
CHECKED:	GAT	10/23/07	△	.	.		
APPROVED:	JF	10/23/07	△	.	.		

3RD ANGLE

UNIT:

IN/mm

SCALE:

2:1

REV.

A

SENIOR INDUSTRIES, INC.

TOLERANCE:

TO 1 DECIMAL PLACE: ± .2

TO 2 DECIMAL PLACES: ± .10

AS ANGLES:

PART NO:

SEE CHART

TITLE:

SSPR 8017P/8018P SEALED
ROCKER/PADDLE SWITCHES

SHEET:

1 OF 5

COMPONENT SPECIFICATION

USE OR REPRODUCTION OF THIS DRAWING FOR THE PURPOSE OF MANUFACTURING THIS ARTICLE OR ANY ARTICLES SHOWN FOR ANY PURPOSE IS STRICTLY PROHIBITED WITHOUT WRITTEN PERMISSION FROM SENIOR INDUSTRIES, INC.

SPECIFICATIONS

ELECTRICAL

CONTACT RATING:

SILVER: 5A @ 120 VAC OR 28 VDC, 2A @ 250 VAC

GOLD: 0.4 VA MAX. @ 20 V MAX. (AC OR DC)

CONTACT RESISTANCE: 10 MILLIOHMS MAX.

INSULATION RESISTANCE: 1,000 MEGOHMS MIN. AT 500 VDC

DIELECTRIC STRENGTH: 1,000 VRMS

MECHANICAL

LIFE: 30,000 CYCLES

ENVIRONMENTAL

OPERATING TEMPERATURE: -30°C TO +85°C

MATERIAL

CASE AND BUSHING: GLASS FILLED NYLON 6/6, UL94V-0

ACTUATOR: NYLON, BLACK STD. INTERNAL O-RING SEAL STD.

FRAME: SPRING STEEL, BLACK STD.

SWITCH SUPPORT: BRASS OR STEEL, TIN PLATED

ACTUATOR PIVOT AND MOUNTING BRACKET: NYLON

ACTUATOR PIVOT RETAINER: STAINLESS STEEL

CONTACT/TERMINALS: COPPER ALLOY, SILVER OR GOLD PLATED

PART NUMBER BUILDER:

SERIES	MODEL NO.	ACTUATOR	ACTUATOR COLOR	TERMINATION	CONTACT PLATING	SEAL
SSPR -		-				
	8017P	R11 (.531" ROCKER)	1 - BLUE	C (PC MOUNT)	Q (SILVER)	BLANK
	8017PA	R12 (.362" SMALL ROCKER)	2 - RED		R (GOLD)	E (EPOXY)
	8018P	R15 (.906" LARGE ROCKER)	3 - BLACK (std)			
	8018PA	P13 (.740" PADDLE)	4 - BROWN			
	8018PB	P16 (1.174" LARGE PADDLE)	5 - GREEN			
		P17 (.644" SMALL PADDLE)	6 - WHITE			
		P18 (.644" ROUND PADDLE)	7 - GRAY			
		P19 (.894" ROUND LARGE PADDLE)	8 - ORANGE			
			9 - YELLOW			
			0 - VIOLET			

DESIGNED:			SYMBOL	DATE	DESCRIPTION OF REVISIONS	DRAWN	APPD.
DRAWN:	GAT	10/23/07		10.23.07	NEW	GAT	JF
CHECKED:	GAT	10/23/07		.	.		
APPROVED:	JF	10/23/07		.	.		

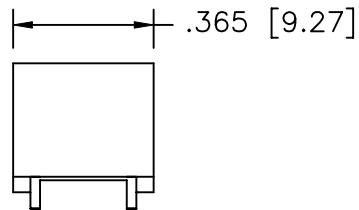
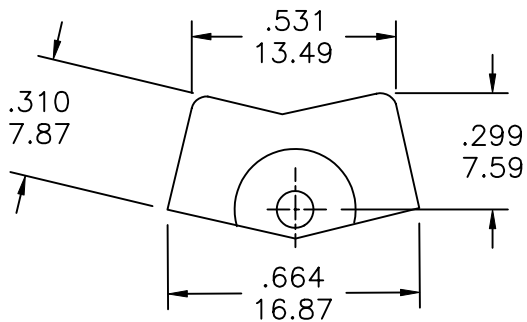
3RD ANGLE		UNIT:	IN/mm	SCALE:	2:1	REV.	A
-----------	--	-------	-------	--------	-----	------	---

	TOLERANCE:	PART NO:	SEE CHART
	TO 1 DECIMAL PLACE:	±	TITLE: SSPR 8017P/8018P SEALED ROCKER/PADDLE SWITCHES
	TO 2 DECIMAL PLACES:	±	
	AS ANGLES:		
SHEET:		2 OF 5	

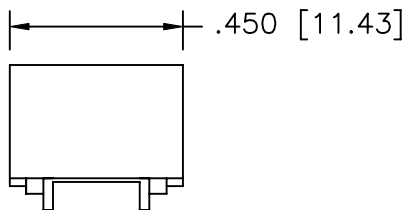
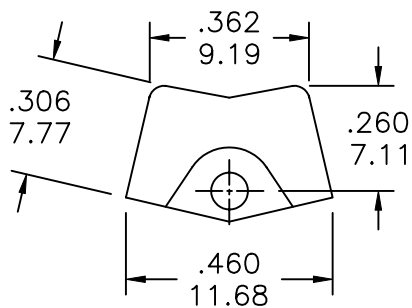
COMPONENT SPECIFICATION

USE OR REPRODUCTION OF THIS DRAWING FOR THE PURPOSE OF MANUFACTURING THIS ARTICLE OR ANY ARTICLES SHOWN FOR ANY PURPOSE IS STRICTLY PROHIBITED WITHOUT WRITTEN PERMISSION FROM SENIOR INDUSTRIES, INC.

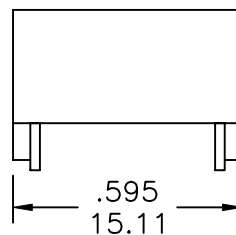
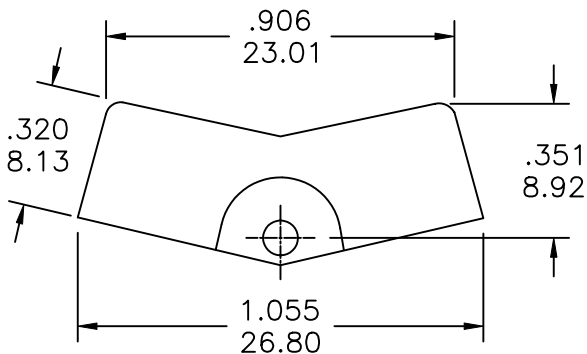
ACTUATOR OPTIONS



R11



R12



R15

DESIGNED:			SYM.	DATE	DESCRIPTION OF REVISIONS	DRAWN	APPD.
DRAWN:	GAT	10/23/07	▲	10.23.07	NEW	GAT	JF
CHECKED:	GAT	10/23/07	▲	. . .			
APPROVED:	JF	10/23/07	▲	. . .			

3RD ANGLE		UNIT:	IN/mm	SCALE:	2:1	REV.	A
-----------	--	-------	-------	--------	-----	------	---



TOLERANCE:	PART NO:	SEE CHART
TO 1 DECIMAL PLACE: ± .2	TITLE:	SSPR 8017P/8018P SEALED ROCKER/PADDLE SWITCHES
TO 2 DECIMAL PLACES: ± .10		
AS ANGLES:		
SHEET:		3 OF 5

1

2

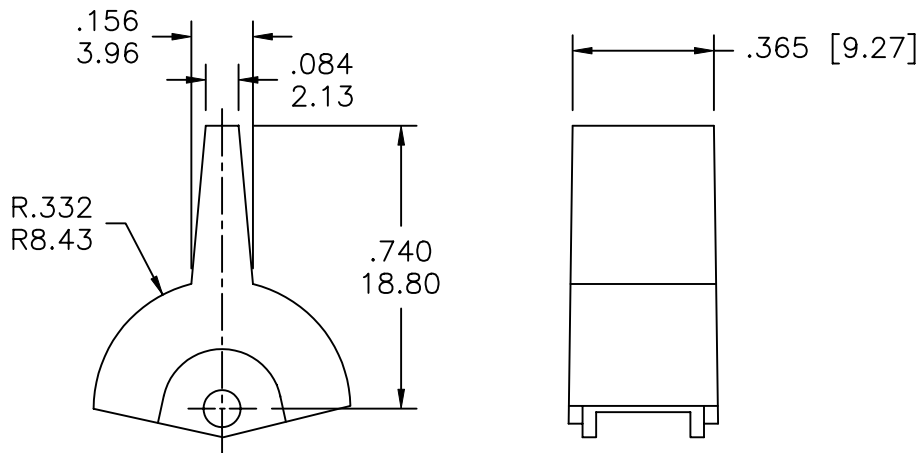
3

4

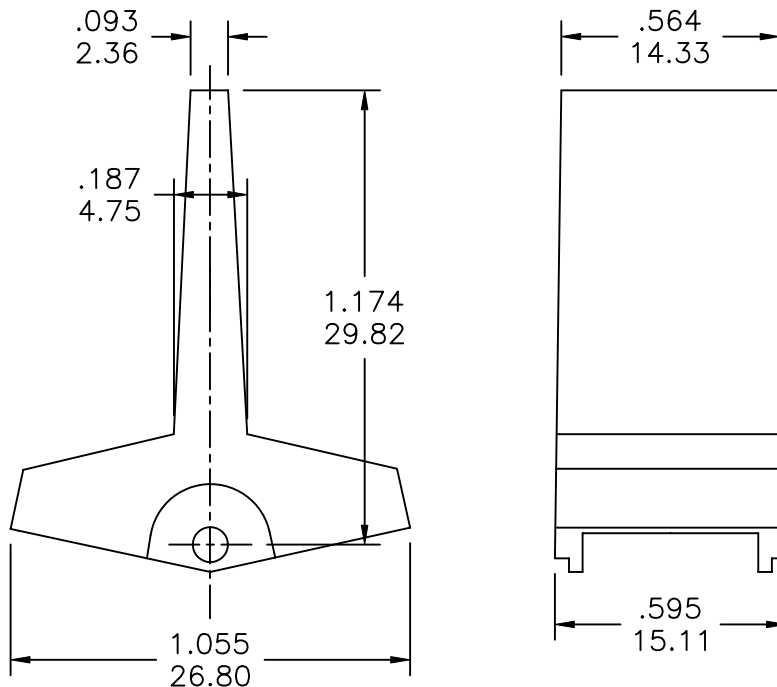
COMPONENT SPECIFICATION

USE OR REPRODUCTION OF THIS DRAWING FOR THE PURPOSE OF MANUFACTURING THIS ARTICLE OR ANY ARTICLES SHOWN FOR ANY PURPOSE IS STRICTLY PROHIBITED WITHOUT WRITTEN PERMISSION FROM SENIOR INDUSTRIES, INC.

ACTUATOR OPTIONS



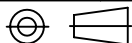
P13



P16

DESIGNED:			SYM.	DATE	DESCRIPTION OF REVISIONS	DRAWN	APPD.
DRAWN:	GAT	10/23/07	▲	10.23.07	NEW	GAT	JF
CHECKED:	GAT	10/23/07	▲	.	.		
APPROVED:	JF	10/23/07	▲	.	.		

3RD ANGLE



UNIT:

IN/mm

SCALE:

2:1

REV.

A



TOLERANCE:

TO 1 DECIMAL PLACE: ± .2

TO 2 DECIMAL PLACES: ± .10

AS ANGLES:

SHEET:

PART NO:

SEE CHART

TITLE:

SSPR 8017P/8018P SEALED
ROCKER/PADDLE SWITCHES

4 OF 5

1

2

3

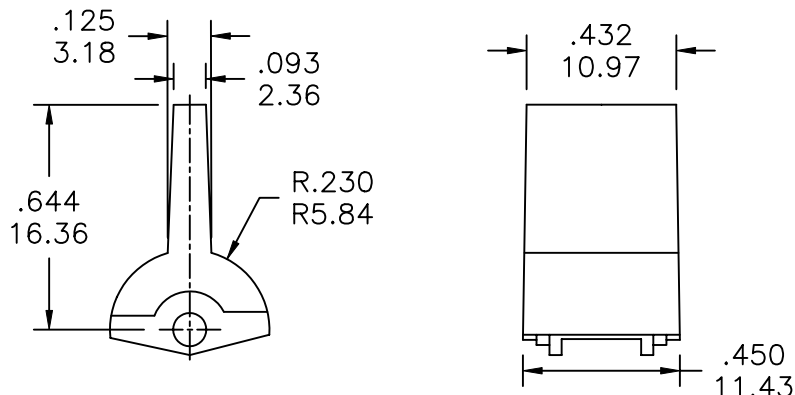
4

COMPONENT SPECIFICATION

USE OR REPRODUCTION OF THIS DRAWING FOR THE PURPOSE OF MANUFACTURING THIS ARTICLE OR ANY ARTICLES SHOWN FOR ANY PURPOSE IS STRICTLY PROHIBITED WITHOUT WRITTEN PERMISSION FROM SENIOR INDUSTRIES, INC.

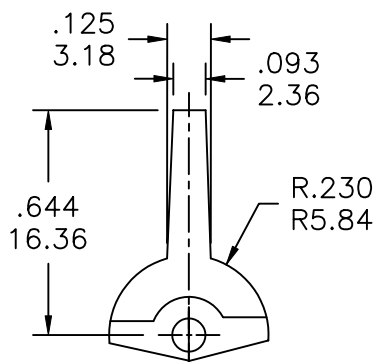
ACTUATOR OPTIONS

A



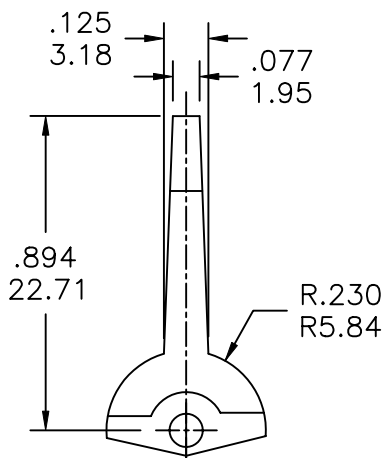
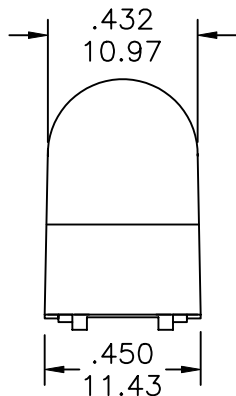
P17

B

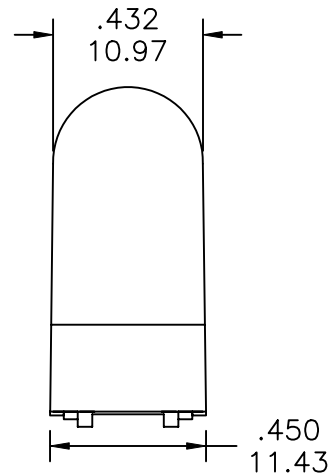


P18

C

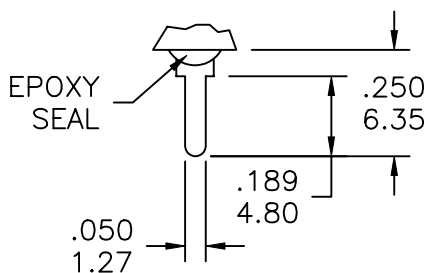


P19



TERMINATION OPTIONS

D



C

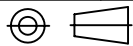
THK. .030 [0.76]

PC MOUNT

DESIGNED:			SYM.	DATE	DESCRIPTION OF REVISIONS	DRAWN	APPD.
DRAWN:	GAT	10/23/07	▲	10.23.07	NEW	GAT	JF
CHECKED:	GAT	10/23/07	▲	.	.		
APPROVED:	JF	10/23/07	▲	.	.		

E

3RD ANGLE



UNIT:

IN/mm

SCALE:

2:1

REV.

A



SENIOR INDUSTRIES, INC.

TOLERANCE:

TO 1 DECIMAL PLACE: ± .2

TO 2 DECIMAL PLACES: ± .10

AS ANGLES:

SHEET:

PART NO:

SEE CHART

TITLE:

SSPR 8017P/8018P SEALED
ROCKER/PADDLE SWITCHES

5 OF 5