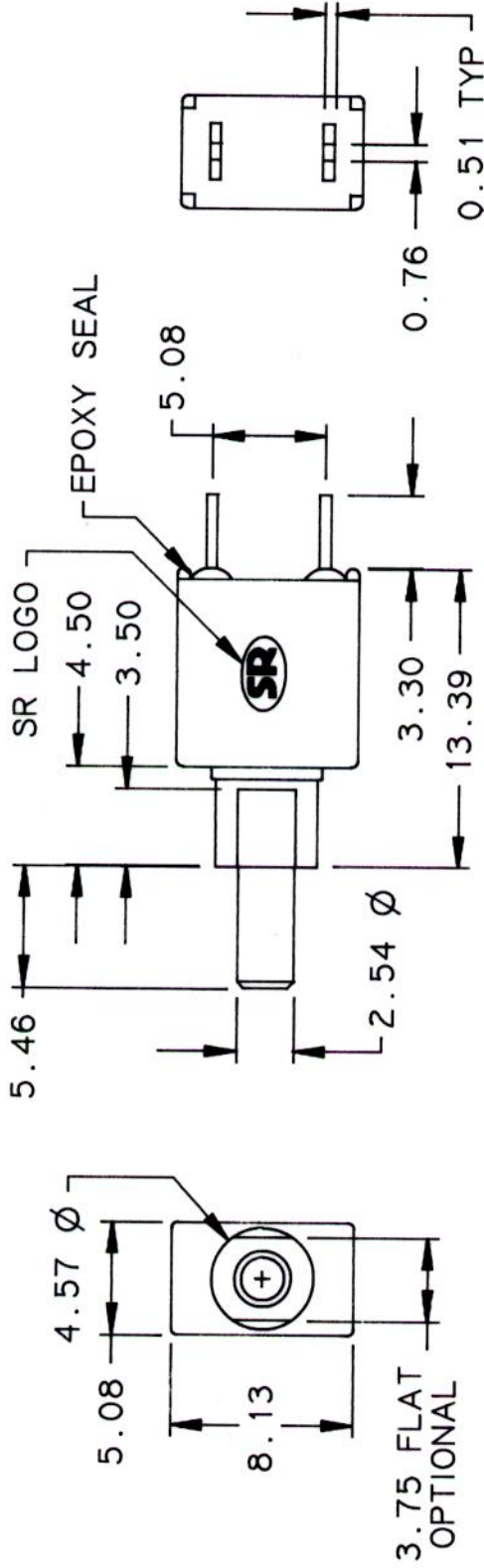


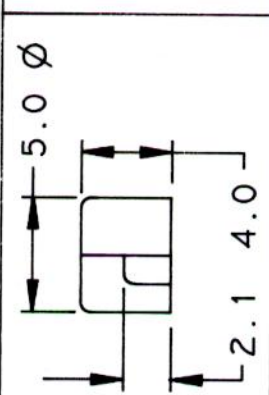
UNLESS OTHERWISE SPECIFIED, ALL DIMENSIONS ARE IN METRIC.

TO 1 DECIMAL PLACES ±.3
 TO 2 DECIMAL PLACES ±.12
 AS ANGLES ± 1/2°

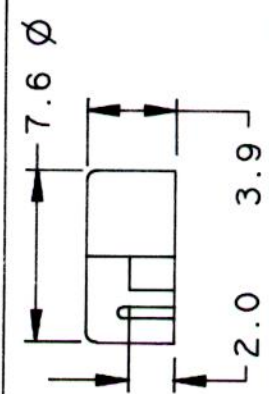
ISSUE A
 DATE 10/14/98



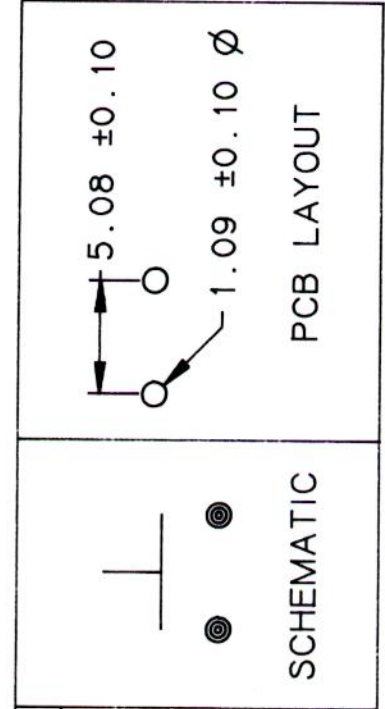
CAP OPTIONS



CV



CL



SCHEMATIC



SENIOR INDUSTRIES, INC.

TITLE: PUSHBUTTON SWITCH

PART NO:

SSSP-TS21-XXXXXX

DATE: 10/13/98

DRAWN: H V

CHKD:

SCALE: 3/1

SHEET:

1 OF 2

UNLESS OTHERWISE SPECIFIED, ALL DIMENSIONS ARE IN METRIC.

TO 1 DECIMAL PLACE ±
TO 2 DECIMAL PLACES ±
AS ANGLES ±

ISSUE

DATE

A

10/14/98

SPECIFICATIONS

ELECTRICAL

CONTACT RATING:

SILVER: 1A AT 120VAC OR 28VDC

GOLD: 0.4VA MAX. AT 20VAC OR VDC MAX.

CONTACT RESISTANCE: 20 MILLIOHMS MAX.

INSULATION RESISTANCE: 1000 MEGOHMS MIN. AT 500 VDC

DIELECTRIC STRENGTH: 1000 VRMS FOR ONE MINUTE MIN.

MECHANICAL

OPERATING LIFE: 50,000 CYCLES UNDER LOAD

SOLDERABILITY: TESTED PER TP1101 AT 245°±5° C FOR 5±1
WITH 95% WETTING

MATERIAL

HOUSING: GLASS FILLED NYLON, UL94V-0

ACTUATOR: PBT, UL94V-0, BLACK WITH INTERNAL O-RING SEAL

CONTACT: COPPER ALLOY, SILVER OR GOLD PLATED

TERMINAL: BRASS, SILVER OR GOLD PLATED

MOUNTING TABS: BRASS, TIN PLATED

ENVIRONMENTAL

OPERATING TEMPERATURE: -30° C TO 85° C

NOTES

FIRST 'X' DENOTES CAP OPTIONS: BLANK= NONE, CV= 5.0 Ø
CL= 7.6 Ø

SECOND 'X' DENOTES CAP COLOR OPTIONS

THIRD 'X' DENOTES BUSHING OPTIONS: U= WITH FLATS, T=
WITHOUT FLATS

FOURTH 'X' DENOTES TERMINATION OPTIONS: B= SOLDER, C=
PCB

FIFTH 'X' DENOTES CONTACT OPTIONS: Q= SILVER, R= GOLD

SIXTH 'X' DENOTES SUPPORT BRACKET OPTIONS: BLANK= NONE
A5= STANDARD



**SENIOR
INDUSTRIES, INC.**

TITLE:

PUSHBUTTON SWITCH

PART NO:

SSSP-TS21-XXXXXX

DATE:

10/13/98

DRAWN:

H V

CHKD:

[Signature]

SCALE:

SHEET:

2 OF 2