

1

2

3

4

COMPONENT  
SPECIFICATIONUSE OR REPRODUCTION OF THIS DRAWING FOR THE PURPOSE OF MANUFACTURING THIS  
ARTICLE OR ANY ARTICLES SHOWN FOR ANY PURPOSE IS STRICTLY PROHIBITED WITHOUT  
WRITTEN PERMISSION FROM SENIOR INDUSTRIES, INC.

MODEL NO.	SWITCHING POSITION	
TS23A	OFF	MOM
CONN. TERMS	OPEN	1-3,4-6
SCHEMATIC	DPST	

FOR PC MOUNT  
TERMINATION ONLY

PCB LAYOUT  
COMPONENT SIDE

DESIGNED:	SYMBOL	DATE	DESCRIPTION OF REVISIONS	DRAWN	APPD.
		06.22.01	NEW	RB	JF
DRAWN: RB 06/22/01		12.07.04	Redrawn dwg., New Index, Changed Numbering on Pins	GAT	JF
CHECKED: GAT 01/17/07		01.17.07	Removed: F22A cap option, B-solder lug, UL	GAT	JF
APPROVED: JF 01/17/07					

3RD ANGLE

UNIT:

IN [mm]

SCALE:

1:1

REV.

C

**SENIOR  
INDUSTRIES, INC.**

TOLERANCE:

TO 2 DECIMAL PLACE:  $\pm .10$ TO 3 DECIMAL PLACES:  $\pm .010$ AS ANGLES:  $\pm 1/2^\circ$ 

SHEET:

PART NO:

SSSP-TS23A-XXXX

TITLE:

PUSHBUTTON SWITCH

1 OF 3

COMPONENT  
SPECIFICATIONUSE OR REPRODUCTION OF THIS DRAWING FOR THE PURPOSE OF MANUFACTURING THIS  
ARTICLE OR ANY ARTICLES SHOWN FOR ANY PURPOSE IS STRICTLY PROHIBITED WITHOUT  
WRITTEN PERMISSION FROM SENIOR INDUSTRIES, INC.SPECIFICATIONSELECTRICALCONTACT RATING: SILVER: 1A @ 120 VAC OR 28 VDC  
GOLD: 0.4 VA MAX. @ 20 V MAX. (AC OR DC)

CONTACT RESISTANCE: 20 MILLIOHMS MAX.

INSULATION RESISTANCE: 1,000 MEGOHMS MIN. AT 500 VDC

DIELECTRIC STRENGTH: 1,000 VRMS

MECHANICAL

LIFE: 50,000 CYCLES

ENVIRONMENTAL

OPERATING TEMPERATURE: -30°C TO +85°C

MATERIAL

CASE: GLASS FILLED NYLON 6/6, UL94V-0

ACTUATOR: THERMOPLASTIC POLYESTER WITH INTERNAL O-RING SEAL, UL94V-0

BUSHING: GLASS FILLED NYLON 6/6, UL94V-0

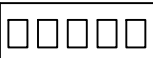


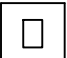

SUPPORT: BRASS, TIN PLATED

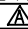
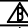

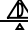
CONTACT/TERMINALS: COPPER ALLOY, SILVER OR GOLD PLATED

REGULATORY

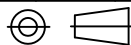
UL AND CANADA RECOGNIZED COMPONENT. UL FILE NO. E173084.

PART NUMBER BUILDER:

SERIES	MODEL NO.	CAP	CAP COLOR	TERMINATION	CONTACT PLATING
SSSP -		- 			
	TS23A	BLANK CV CV1	BLANK 1 - BLUE 2 - RED 3 - BLACK (STD) 4 - BROWN 5 - GREEN 6 - WHITE 7 - GRAY 8 - ORANGE 9 - YELLOW 0 - VIOLET	C (PC MOUNT)	Q (SILVER) R (GOLD)

DESIGNED:			SYM.	DATE	DESCRIPTION OF REVISIONS	DRAWN	APPD.
				06.22.01	NEW	RB	JF
DRAWN:	RB	06/22/01		12.07.04	Redrawn dwg., New Index, Changed Numbering on Pins	GAT	JF
CHECKED:	GAT	01/17/07		01.17.07	Removed: F22A cap option, B-solder lug, UL	GAT	JF
APPROVED:	JF	01/17/07					

3RD ANGLE



UNIT:

IN [mm]

SCALE:

REV.

C

**SENIOR  
INDUSTRIES, INC.**

TOLERANCE:

TO 2 DECIMAL PLACE:	±.10
TO 3 DECIMAL PLACES:	±.010
AS ANGLES:	±1/2°

PART NO:

SSSP-TS23A-XXXX

TITLE:

PUSHBUTTON SWITCH

SHEET:

2 OF 3

1

2

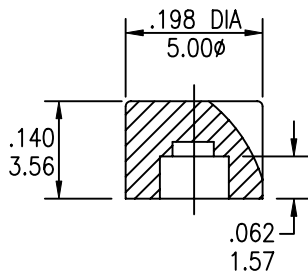
3

4

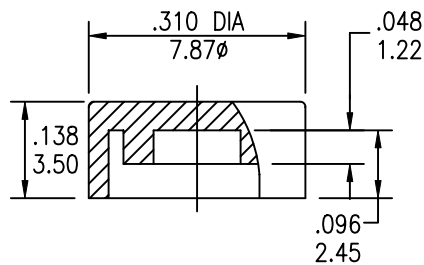
COMPONENT SPECIFICATION

USE OR REPRODUCTION OF THIS DRAWING FOR THE PURPOSE OF MANUFACTURING THIS ARTICLE OR ANY ARTICLES SHOWN FOR ANY PURPOSE IS STRICTLY PROHIBITED WITHOUT WRITTEN PERMISSION FROM SENIOR INDUSTRIES, INC.

CAP OPTIONS

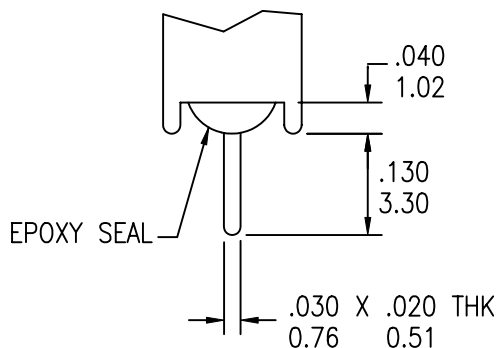


CV



CV1

TERMINATION OPTIONS



C (PC MOUNT)

DESIGNED:			SYM.	DATE	DESCRIPTION OF REVISIONS	DRAWN	APPD.
			▲	06.22.01	NEW	RB	JF
DRAWN:	RB	06/22/01	▲	12.07.04	Redrawn dwg., New Index, Changed Numbering on Pins	GAT	JF
CHECKED:	GAT	01/17/07	▲	01.17.07	Removed: F22A cap option, B-solder lug, UL	GAT	JF
APPROVED:	JF	01/17/07	▲				

3RD ANGLE		UNIT:	IN [mm]	SCALE:		REV.	C
-----------	--	-------	---------	--------	--	------	---



TOLERANCE:		PART NO:	SSSP-TS23A-XXXX
TO 2 DECIMAL PLACE:	±.10	TITLE:	PUSHBUTTON SWITCH
TO 3 DECIMAL PLACES:	±.010		
AS ANGLES:	±1/2°		
SHEET:		3 OF 3	