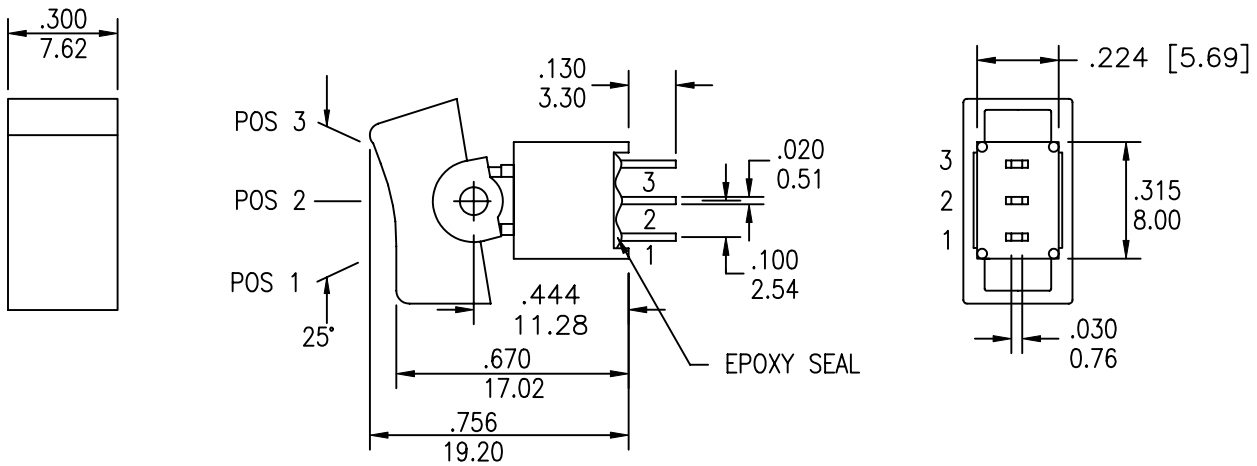
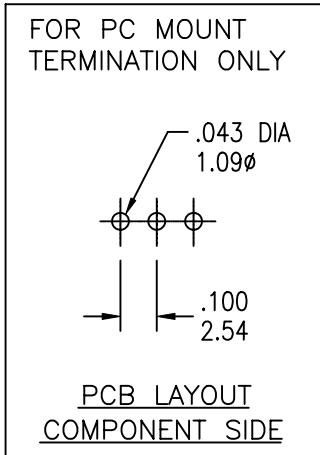


1	2	3	4
COMPONENT SPECIFICATION	USE OR REPRODUCTION OF THIS DRAWING FOR THE PURPOSE OF MANUFACTURING THIS ARTICLE OR ANY ARTICLES SHOWN FOR ANY PURPOSE IS STRICTLY PROHIBITED WITHOUT WRITTEN PERMISSION FROM SENIOR INDUSTRIES, INC.		

A
B
C
D
E



MODEL NO.	SWITCHING POSITION		
RS4	ON	NONE	ON
RS4A	ON	NONE	MOM
RS4B	ON	OFF	ON
RS4C	MOM	OFF	MOM
RS4D	ON	OFF	MOM
CONNECTED TERMINALS	2-3	OPEN	2-1
SCHEMATIC	SPDT 2 Comm. 1 3		
RS4E	OFF	NONE	ON
CONNECTED TERMINALS	OPEN	-	3-1



NON-SHORTING TYPE

DESIGNED:			SYM.	DATE	DESCRIPTION OF REVISIONS	DRAWN	APPD.
DRAWN:	RB	07/12/01		07.12.01	NEW	RB	TF
CHECKED:	GAT	10/21/08		07.03.07	Recreated spec in Cad. Added Solder Lug as termination option	GAT	JF
APPROVED:	JF	10/21/08		10.21.08	Added RS4A-E options and A6 snap-in Bracket option	GAT	JF

3RD ANGLE		UNIT:	IN[mm]	SCALE:	2:1	REV.	C
-----------	--	-------	--------	--------	-----	------	---



SENIOR INDUSTRIES, INC.

TOLERANCE:	PART NO:
TO 1 DECIMAL PLACE: ± .2	SSSR-RS4X-XXXXEX
TO 2 DECIMAL PLACES: ± .10	TITLE:
AS ANGLES:	ROCKER SWITCH
SHEET:	1 OF 4

1

2

3

4

COMPONENT
SPECIFICATIONUSE OR REPRODUCTION OF THIS DRAWING FOR THE PURPOSE OF MANUFACTURING THIS
ARTICLE OR ANY ARTICLES SHOWN FOR ANY PURPOSE IS STRICTLY PROHIBITED WITHOUT
WRITTEN PERMISSION FROM SENIOR INDUSTRIES, INC.SPECIFICATIONSELECTRICAL

CONTACT RATING:

SILVER: 3A @ 120 VAC OR 28 VDC, 1A @ 250 VAC

GOLD: 0.4 VA MAX. @ 20 V MAX. (AC OR DC)

CONTACT RESISTANCE: 20 MILLIOHMS MAX.

INSULATION RESISTANCE: 1,000 MEGOHMS MIN. AT 500 VDC

DIELECTRIC STRENGTH: 1,000 VRMS

MECHANICAL

OPERATING LIFE: 30,000 CYCLES

ENVIRONMENTAL

OPERATING TEMPERATURE: -30°C TO +85°C

MATERIAL

CASE: GLASS FILLED NYLON 6/6, UL94V-0

ACTUATOR: NYLON, INTERNAL O-RING SEAL STANDARD

BUSHING: GLASS FILLED NYLON 6/6, UL94V-0

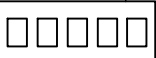


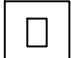



SUPPORT: BRASS, TIN PLATED

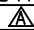
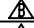

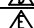
CONTACT/TERMINALS: COPPER ALLOY, SILVER OR GOLD PLATED

REGULATORY:

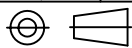
UL AND CANADA RECOGNIZED COMPONENT. UL FILE NO. E173084.

PART NUMBER BUILDER:

SERIES	MODEL NO.	ACTUATOR	ACTUATOR COLOR	TERMINATION	CONTACT PLATING	SEAL	VERTICAL SUPPORT BRACKET
SSSR -		- 					
	RS4 RS4A RS4B RS4C RS4D RS4E	R1 - 7.62 wide (STD) R2 - 5.84 wide	1 - BLUE 2 - RED 3 - BLACK (STD) 4 - BROWN 5 - GREEN 6 - WHITE 7 - GRAY 8 - ORANGE 9 - YELLOW 0 - VIOLET	B (SOLDER LUG) C (PC MOUNT)	Q (SILVER) R (GOLD)	E (EPOXY)	BLANK A5 A6 (SNAP-IN)

DESIGNED:			SYM.	DATE	DESCRIPTION OF REVISIONS	DRAWN	APPD.
				07.12.01	NEW	RB	TF
DRAWN:	RB	07/12/01		07.03.07	Recreated spec in Cad. Added Solder Lug as termination option	GAT	JF
CHECKED:	GAT	10/21/08		10.21.08	Added RS4A-E options and A6 snap-in Bracket option	GAT	JF
APPROVED:	JF	10/21/08		.			

3RD ANGLE



UNIT:

IN[mm]

SCALE:

REV.

C

**SENIOR
INDUSTRIES, INC.**

TOLERANCE:

TO 1 DECIMAL PLACE: ±

TO 2 DECIMAL PLACES: ±

AS ANGLES:

SHEET:

PART NO:

SSSR-RS4X-XXXXEX

TITLE:

ROCKER SWITCH

2 OF 4

1

2

3

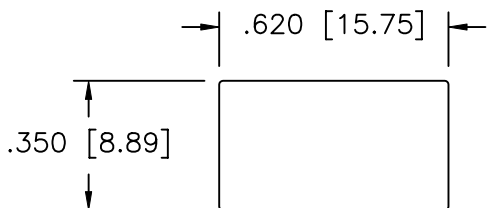
4

COMPONENT SPECIFICATION

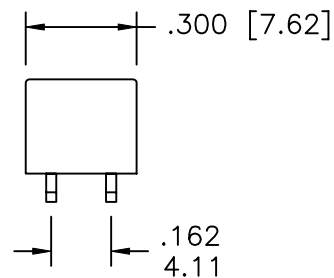
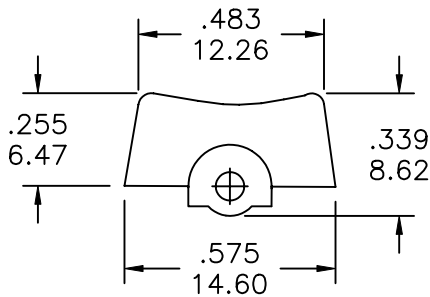
USE OR REPRODUCTION OF THIS DRAWING FOR THE PURPOSE OF MANUFACTURING THIS ARTICLE OR ANY ARTICLES SHOWN FOR ANY PURPOSE IS STRICTLY PROHIBITED WITHOUT WRITTEN PERMISSION FROM SENIOR INDUSTRIES, INC.

A

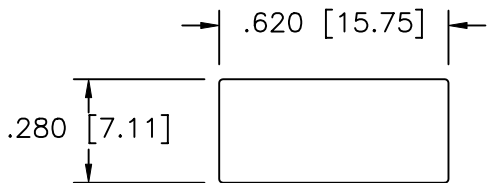
ACTUATOR OPTIONS:



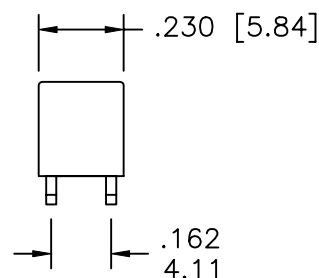
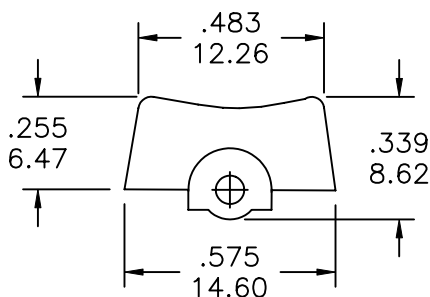
PANEL MOUNTING - R1



B

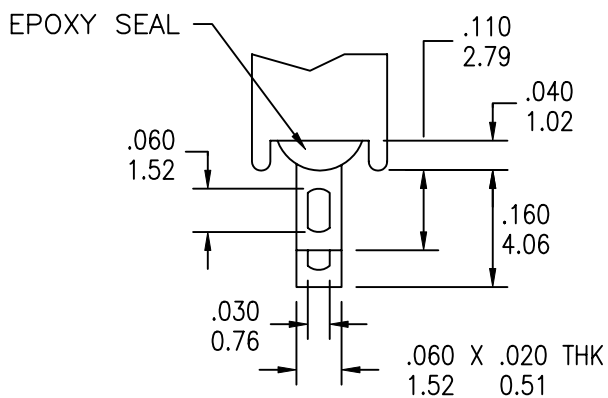


PANEL MOUNTING - R2



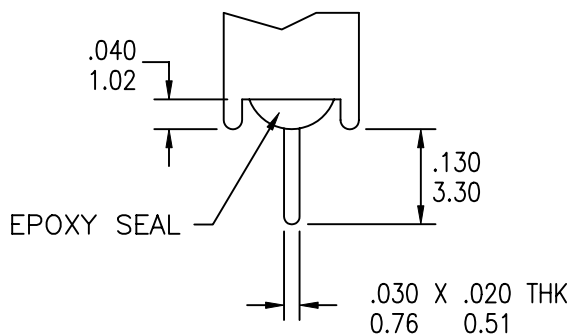
C

TERMINATION OPTIONS



B (SOLDER LUG)

SP



C (PC MOUNT)

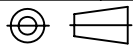
SP

D

DESIGNED:			SYM.	DATE	DESCRIPTION OF REVISIONS	DRAWN	APPD.
			▲	07.12.01	NEW	RB	TF
DRAWN:	RB	07/12/01	▲	07.03.07	Recreated spec in Cad. Added Solder Lug as termination option	GAT	JF
CHECKED:	GAT	10/21/08	▲	10.21.08	Added RS4A-E options and A6 snap-in Bracket option	GAT	JF
APPROVED:	JF	10/21/08	▲				

E

3RD ANGLE



UNIT:

IN[mm]

SCALE:

2:1

REV.

C



SENIOR INDUSTRIES, INC.

TOLERANCE:

TO 1 DECIMAL PLACE: ± .2

TO 2 DECIMAL PLACES: ± .10

AS ANGLES:

SHEET:

PART NO:

SSSR-RS4X-XXXXEX

TITLE:

ROCKER SWITCH

3 OF 4

1

2

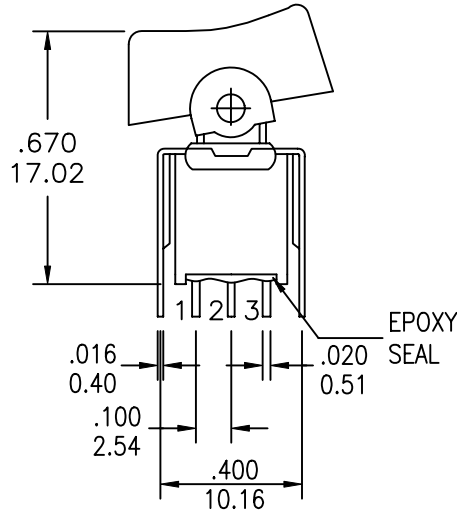
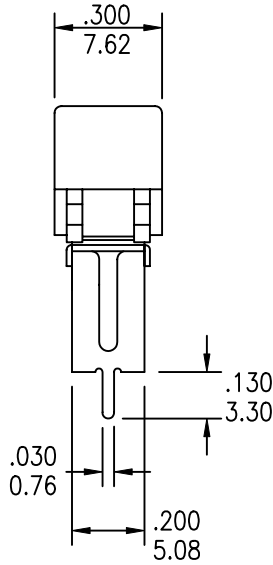
3

4

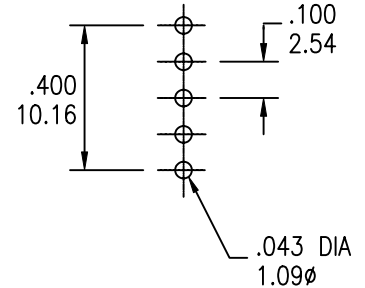
COMPONENT SPECIFICATION

USE OR REPRODUCTION OF THIS DRAWING FOR THE PURPOSE OF MANUFACTURING THIS ARTICLE OR ANY ARTICLES SHOWN FOR ANY PURPOSE IS STRICTLY PROHIBITED WITHOUT WRITTEN PERMISSION FROM SENIOR INDUSTRIES, INC.

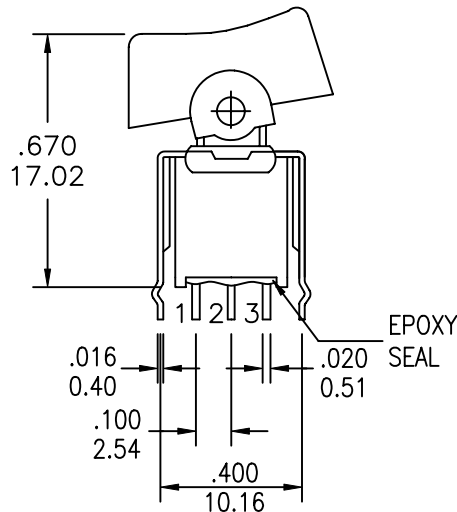
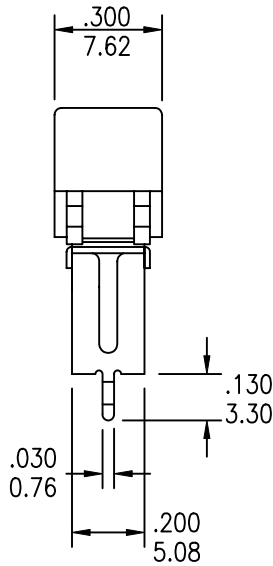
VERTICAL SUPPORT BRACKET



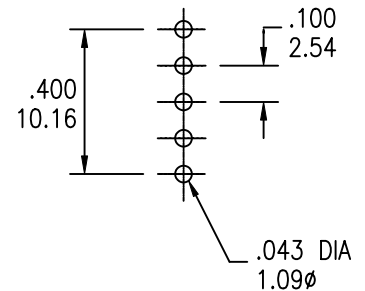
P.C. MOUNTING



A5



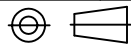
SNAP-IN P.C. MOUNTING



A6

DESIGNED:			SYM.	DATE	DESCRIPTION OF REVISIONS	DRAWN	APPD.
DRAWN:	RB	07/12/01	▲	07.12.01	NEW	RB	TF
CHECKED:	GAT	10/21/08	▲	07.03.07	Recreated spec in Cad. Added Solder Lug as termination option	GAT	JF
APPROVED:	JF	10/21/08	▲	10.21.08	Added RS4A-E options and A6 snap-in Bracket option	GAT	JF
			▲				

3RD ANGLE



UNIT:

IN[mm]

SCALE:

2:1

REV.

C



SENIOR INDUSTRIES, INC.

TOLERANCE:

TO 1 DECIMAL PLACE: ± .2

TO 2 DECIMAL PLACES: ± .10

AS ANGLES:

SHEET:

PART NO:

SSSR-RS4X-XXXXEX

TITLE:

ROCKER SWITCH

4 OF 4