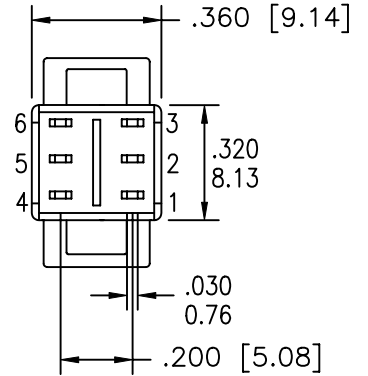
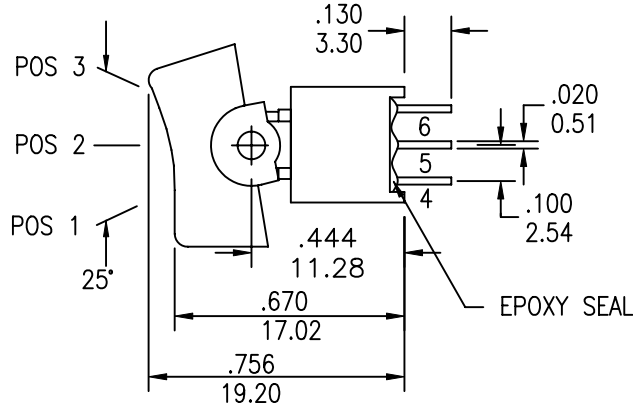
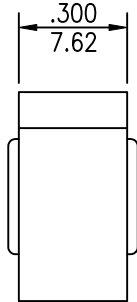
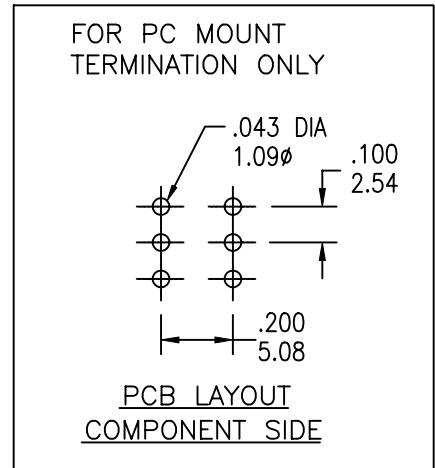


COMPONENT SPECIFICATION

USE OR REPRODUCTION OF THIS DRAWING FOR THE PURPOSE OF MANUFACTURING THIS ARTICLE OR ANY ARTICLES SHOWN FOR ANY PURPOSE IS STRICTLY PROHIBITED WITHOUT WRITTEN PERMISSION FROM SENIOR INDUSTRIES, INC.



MODEL NO.	SWITCHING POSITION		
RS5	ON	NONE	ON
RS5A	ON	NONE	MOM
RS5B	ON	OFF	ON
CONN. TERMS	2-3 5-6	OPEN	2-1 5-4
SCHEMATIC			



NON-SHORTING TYPE

DESIGNED:			SYM.	DATE	DESCRIPTION OF REVISIONS	DRAWN	APPD.
DRAWN:	RB	07/12/01	▲	07.12.01	NEW	RB	TF
CHECKED:	GAT	10/21/08	▲	07.03.07	Recreated spec in Cad. Added Solder Lug as termination option	GAT	JF
APPROVED:	JF	10/21/08	▲	10.21.08	Added RS5A and B switching positions	GAT	JF

3RD ANGLE		UNIT:	IN[mm]	SCALE:	2:1	REV.	C
-----------	--	-------	--------	--------	-----	------	---



TOLERANCE:	PART NO:	SSSR-RS5X-XXXXEX
TO 1 DECIMAL PLACE: ± .2	TITLE:	ROCKER SWITCH
TO 2 DECIMAL PLACES: ± .10		
AS ANGLES:		
SHEET:		1 OF 4

COMPONENT SPECIFICATION

USE OR REPRODUCTION OF THIS DRAWING FOR THE PURPOSE OF MANUFACTURING THIS ARTICLE OR ANY ARTICLES SHOWN FOR ANY PURPOSE IS STRICTLY PROHIBITED WITHOUT WRITTEN PERMISSION FROM SENIOR INDUSTRIES, INC.

SPECIFICATIONS

ELECTRICAL

CONTACT RATING:

SILVER: 3A @ 120 VAC OR 28 VDC, 1A @ 250 VAC

GOLD: 0.4 VA MAX. @ 20 V MAX. (AC OR DC)

CONTACT RESISTANCE: 20 MILLIOHMS MAX.

INSULATION RESISTANCE: 1,000 MEGOHMS MIN. AT 500 VDC

DIELECTRIC STRENGTH: 1,000 VRMS

MECHANICAL

OPERATING LIFE: 30,000 CYCLES

ENVIRONMENTAL

OPERATING TEMPERATURE: -30°C TO +85°C

MATERIAL

CASE: GLASS FILLED NYLON 6/6, UL94V-0

ACTUATOR: NYLON, INTERNAL O-RING SEAL STANDARD

BUSHING: GLASS FILLED NYLON 6/6, UL94V-0

SUPPORT: BRASS, TIN PLATED

CONTACT/TERMINALS: COPPER ALLOY, SILVER OR GOLD PLATED

REGULATORY

UL AND CANADA RECOGNIZED COMPONENT. UL FILE NO. E173084.

PART NUMBER BUILDER:

SERIES	MODEL NO.	ACTUATOR	ACTUATOR COLOR	TERMINATION	CONTACT PLATING	SEAL	VERTICAL SUPPORT BRACKET
SSSR -		-					
	RS5 RS5A RS5B	R1 - 7.62 wide (STD) R2 - 5.84 wide	1 - BLUE 2 - RED 3 - BLACK (STD) 4 - BROWN 5 - GREEN 6 - WHITE 7 - GRAY 8 - ORANGE 9 - YELLOW 0 - VIOLET	B (SOLDER LUG) C (PC MOUNT)	Q (SILVER) R (GOLD)	E (EPOXY)	BLANK A5

DESIGNED:	DRAWN:	CHECKED:	APPROVED:	SYM.	DATE	DESCRIPTION OF REVISIONS	DRAWN	APPD.
	RB	GAT	JF		07.12.01	NEW	RB	TF
					07.03.07	Recreated spec in Cad. Added Solder Lug as termination option	GAT	JF
					10.21.08	Added RS5A and B switching positions	GAT	JF
					.	.		

3RD ANGLE		UNIT:	IN[mm]	SCALE:		REV.	C
-----------	--	-------	--------	--------	--	------	---



TOLERANCE:	PART NO:
TO 1 DECIMAL PLACE: ±	SSSR-RS5X-XXXXEX
TO 2 DECIMAL PLACES: ±	TITLE:
AS ANGLES:	ROCKER SWITCH
SHEET:	2 OF 4

1

2

3

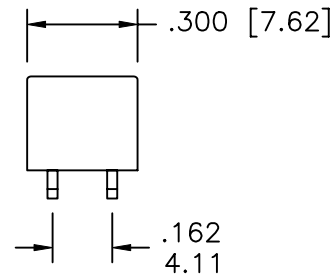
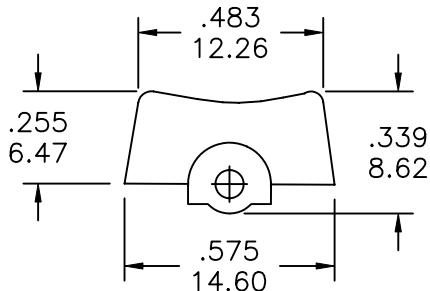
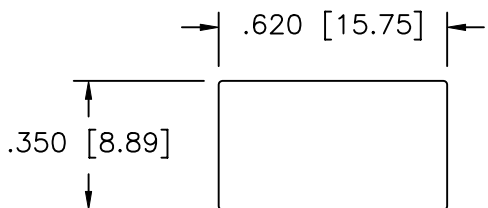
4

COMPONENT SPECIFICATION

USE OR REPRODUCTION OF THIS DRAWING FOR THE PURPOSE OF MANUFACTURING THIS ARTICLE OR ANY ARTICLES SHOWN FOR ANY PURPOSE IS STRICTLY PROHIBITED WITHOUT WRITTEN PERMISSION FROM SENIOR INDUSTRIES, INC.

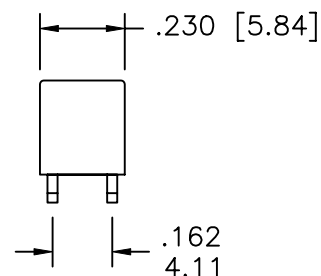
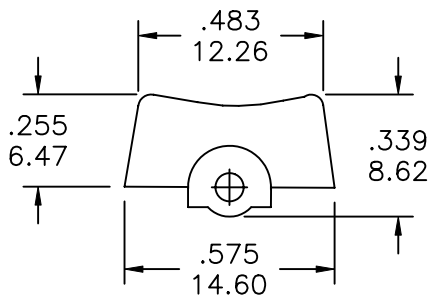
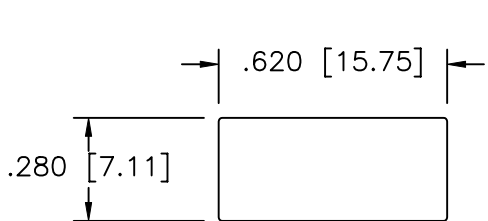
A

ACTUATOR OPTIONS:



PANEL MOUNTING - R1

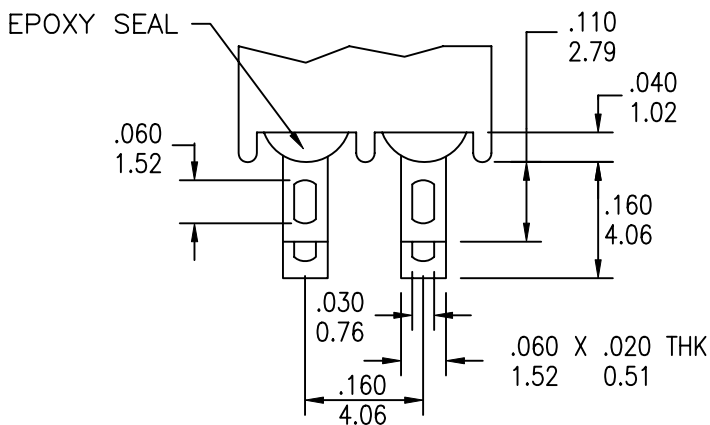
B



PANEL MOUNTING - R2

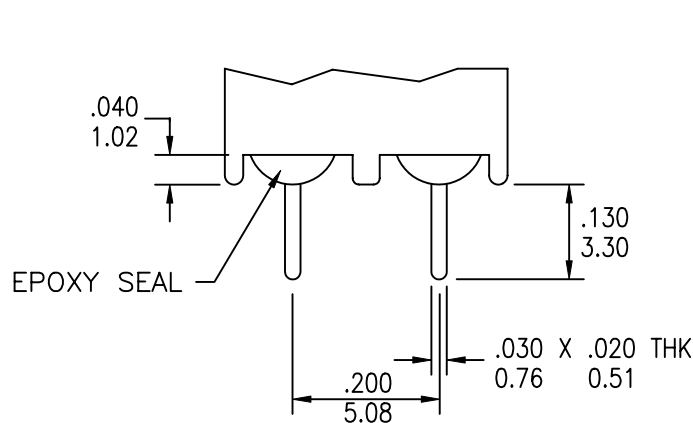
C

TERMINATION OPTIONS



B (SOLDER LUG)

DP



C (PC MOUNT)

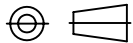
DP

D

DESIGNED:			SYM.	DATE	DESCRIPTION OF REVISIONS	DRAWN	APPD.
DRAWN:	RB	07/12/01	△	07.12.01	NEW	RB	TF
CHECKED:	GAT	10/21/08	△	07.03.07	Recreated spec in Cad. Added Solder Lug as termination option	GAT	JF
APPROVED:	JF	10/21/08	△	10.21.08	Added RS5A and B switching positions	GAT	JF
			△	.			
			△	.			

E

3RD ANGLE



UNIT:

IN[mm]

SCALE:

2:1

REV.

C



SENIOR INDUSTRIES, INC.

TOLERANCE:

TO 1 DECIMAL PLACE: ± .2

TO 2 DECIMAL PLACES: ± .10

AS ANGLES:

SHEET:

PART NO:

SSSR-RS5X-XXXXEX

TITLE:

ROCKER SWITCH

3 OF 4

1

2

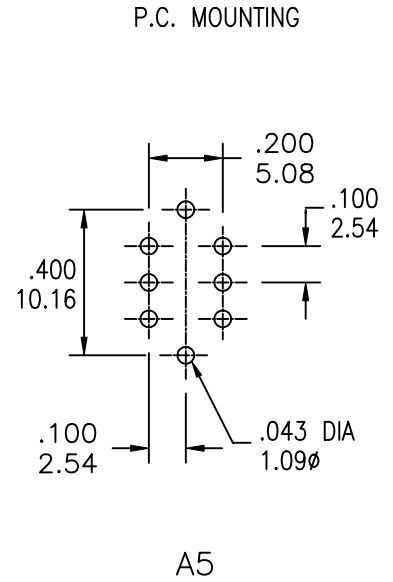
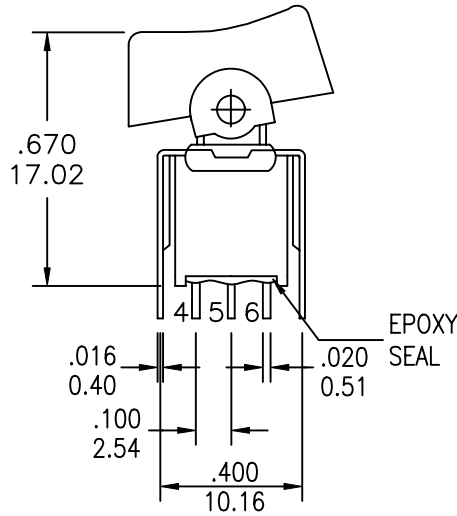
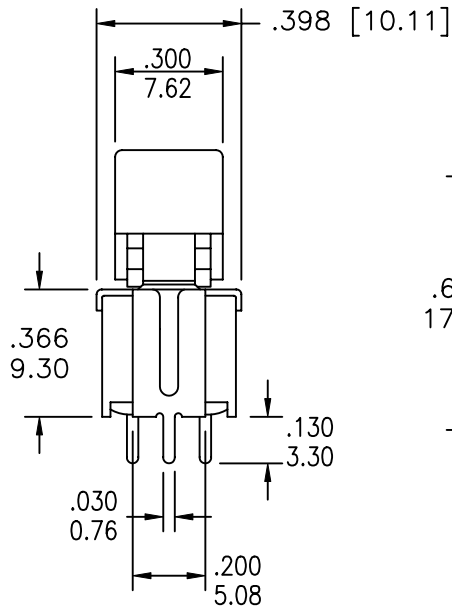
3

4

COMPONENT SPECIFICATION

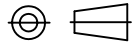
USE OR REPRODUCTION OF THIS DRAWING FOR THE PURPOSE OF MANUFACTURING THIS ARTICLE OR ANY ARTICLES SHOWN FOR ANY PURPOSE IS STRICTLY PROHIBITED WITHOUT WRITTEN PERMISSION FROM SENIOR INDUSTRIES, INC.

VERTICAL SUPPORT BRACKET



DESIGNED:			SYM.	DATE	DESCRIPTION OF REVISIONS	DRAWN	APPD.
DRAWN:	RB	07/12/01	▲	07.12.01	NEW	RB	TF
CHECKED:	GAT	10/21/08	▲	07.03.07	Recreated spec in Cad. Added Solder Lug as termination option	GAT	JF
APPROVED:	JF	10/21/08	▲	10.21.08	Added RS5A and B switching positions	GAT	JF
			▲	.			
			▲	.			

3RD ANGLE



UNIT:

IN[mm]

SCALE:

2:1

REV.

C



SENIOR INDUSTRIES, INC.

TOLERANCE:

TO 1 DECIMAL PLACE: ± .2

TO 2 DECIMAL PLACES: ± .10

AS ANGLES:

SHEET:

PART NO:

SSSR-RS5X-XXXXEX

TITLE:

ROCKER SWITCH

4 OF 4