

1

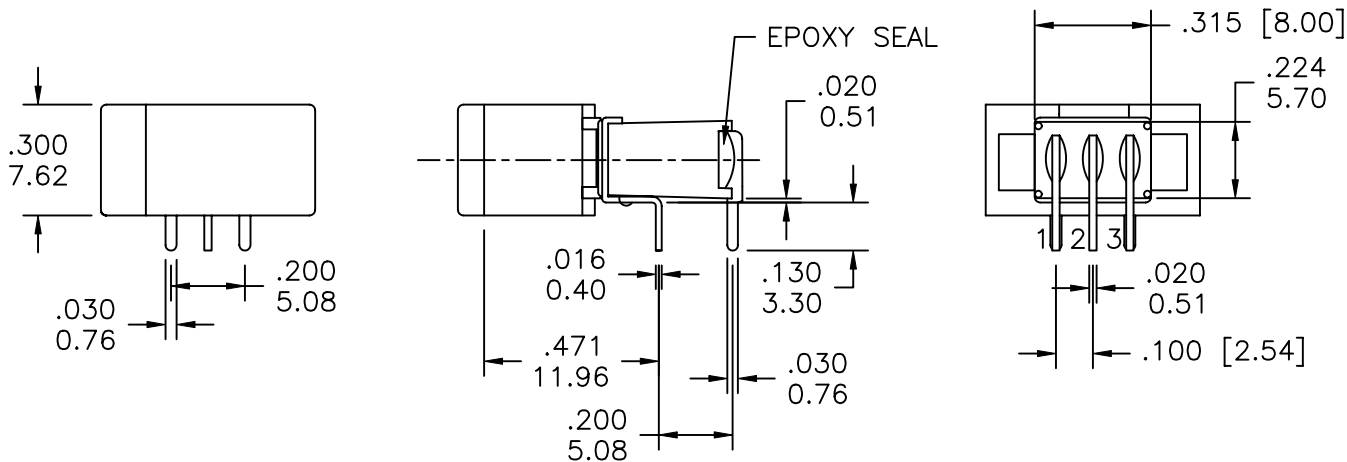
2

3

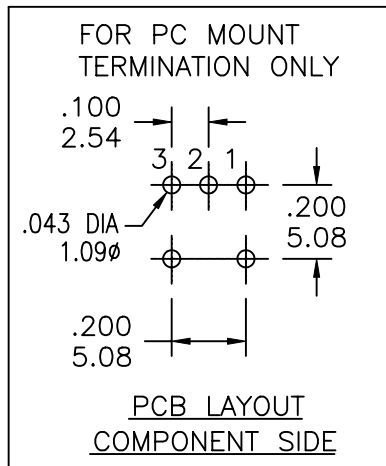
4

COMPONENT SPECIFICATION

USE OR REPRODUCTION OF THIS DRAWING FOR THE PURPOSE OF MANUFACTURING THIS ARTICLE OR ANY ARTICLES SHOWN FOR ANY PURPOSE IS STRICTLY PROHIBITED WITHOUT WRITTEN PERMISSION FROM SENIOR INDUSTRIES, INC.



| MODEL NO.   | SWITCHING POSITION |      |     |
|-------------|--------------------|------|-----|
|             |                    |      |     |
| RS6         | ON                 | NONE | ON  |
| CONN. TERMS | 2-3                | OPEN | 2-1 |
| SCHEMATIC   | SPDT               |      |     |



| DESIGNED: |     |          | SYM. | DATE     | DESCRIPTION OF REVISIONS                                    | DRAWN | APPD. |
|-----------|-----|----------|------|----------|---|-------|-------|
| DRAWN:    | RB  | 07/12/01 |      | 07.12.01 | NEW   | RB    | TF    |
| CHECKED:  | GAT | 10/21/08 |      | 07.03.07 | Recreated spec in Cad. Added Actuator options in PN builder | GAT   | JF    |
| APPROVED: | JF  | 10/21/08 |      | 10/21/08 | Added CN - snap-in PC mount option                          | GAT   | JF    |
|           |     |          |      | ..       |   |       |       |

|           |  |       |        |        |     |      |   |
|-----------|--|-------|--------|--------|-----|------|---|
| 3RD ANGLE |  | UNIT: | IN[mm] | SCALE: | 2:1 | REV. | C |
|-----------|--|-------|--------|--------|-----|------|---|



|                            |                |
|----------------------------|----------------|
| TOLERANCE:                 | PART NO:       |
| TO 1 DECIMAL PLACE: ± .2   | SSSR-RS6-XXXXE |
| TO 2 DECIMAL PLACES: ± .10 | TITLE:         |
| AS ANGLES:                 | ROCKER SWITCH  |
| SHEET:                     | 1 OF 3         |

COMPONENT SPECIFICATION

USE OR REPRODUCTION OF THIS DRAWING FOR THE PURPOSE OF MANUFACTURING THIS ARTICLE OR ANY ARTICLES SHOWN FOR ANY PURPOSE IS STRICTLY PROHIBITED WITHOUT WRITTEN PERMISSION FROM SENIOR INDUSTRIES, INC.

SPECIFICATIONS

ELECTRICAL

CONTACT RATING:

SILVER: 3A @ 120 VAC OR 28 VDC, 1A @ 250 VAC

GOLD: 0.4 VA MAX. @ 20 V MAX. (AC OR DC)

CONTACT RESISTANCE: 20 MILLIOHMS MAX.

INSULATION RESISTANCE: 1,000 MEGOHMS MIN. AT 500 VDC

DIELECTRIC STRENGTH: 1,000 VRMS

MECHANICAL

OPERATING LIFE: 30,000 CYCLES

ENVIRONMENTAL

OPERATING TEMPERATURE: -30°C TO +85°C

MATERIAL

CASE: GLASS FILLED NYLON 6/6, UL94V-0

ACTUATOR: NYLON, INTERNAL O-RING SEAL STANDARD

BUSHING: GLASS FILLED NYLON 6/6, UL94V-0

SUPPORT: BRASS, TIN PLATED

CONTACT/TERMINALS: COPPER ALLOY, SILVER OR GOLD PLATED

REGULATORY

UL AND CANADA RECOGNIZED COMPONENT. UL FILE NO. E173084.

PART NUMBER BUILDER:

| SERIES | MODEL NO.            | ACTUATOR                               | ACTUATOR COLOR  | TERMINATION                           | CONTACT PLATING        | SEAL                 |
|--------|----------------------|--|---|---------------------------------------|------------------------|----------------------|
| SSSR - | <input type="text"/> | - <input type="text"/>                 | <input type="text"/>  | <input type="text"/>                  | <input type="text"/>   | <input type="text"/> |
|        | RS6                  | R1 - 7.62 wide (STD)<br>R2 - 5.84 wide | 1 - BLUE<br>2 - RED<br>3 - BLACK (STD)<br>4 - BROWN<br>5 - GREEN<br>6 - WHITE<br>7 - GRAY<br>8 - ORANGE<br>9 - YELLOW<br>0 - VIOLET | C (PC MOUNT)<br>CN (SNAP-IN PC MOUNT) | Q (SILVER)<br>R (GOLD) | E (EPOXY)            |

| DESIGNED: | DRAWN: | CHECKED: | APPROVED: | SYM. | DATE     | DESCRIPTION OF REVISIONS                                    | DRAWN | APPD. |
|-----------|--------|----------|-----------|------|----------|---|-------|-------|
|           | RB     | GAT      | JF        | △    | 07.12.01 | NEW   | RB    | TF    |
|           |        |          |           | △    | 07.03.07 | Recreated spec in Cad. Added Actuator options in PN builder | GAT   | JF    |
|           |        |          |           | △    | 10.21.08 | Added CN - snap-in PC mount option                          | GAT   | JF    |
|           |        |          |           | △    | .        | .   |       |       |

|           |  |       |        |        |  |      |   |
|-----------|--|-------|--------|--------|--|------|---|
| 3RD ANGLE |  | UNIT: | IN[mm] | SCALE: |  | REV. | C |
|-----------|--|-------|--------|--------|--|------|---|

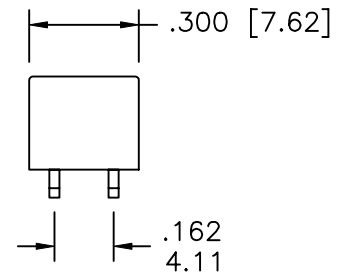
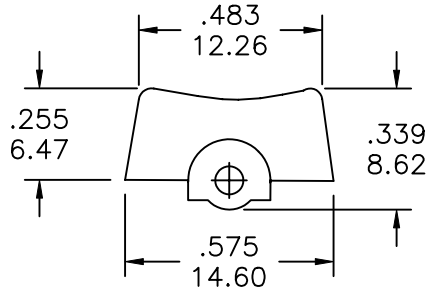
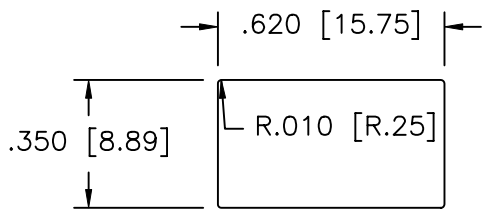


|                        |                |
|------------------------|----------------|
| TOLERANCE:             | PART NO:       |
| TO 1 DECIMAL PLACE: ±  | SSSR-RS6-XXXXE |
| TO 2 DECIMAL PLACES: ± | TITLE:         |
| AS ANGLES:             | ROCKER SWITCH  |
| SHEET:                 | 2 OF 3         |

|                              |   |   |   |
|------------------------------|---|---|---|
| 1<br>COMPONENT SPECIFICATION | 2<br>USE OR REPRODUCTION OF THIS DRAWING FOR THE PURPOSE OF MANUFACTURING THIS ARTICLE OR ANY ARTICLES SHOWN FOR ANY PURPOSE IS STRICTLY PROHIBITED WITHOUT WRITTEN PERMISSION FROM SENIOR INDUSTRIES, INC. | 3 | 4 |
|------------------------------|---|---|---|

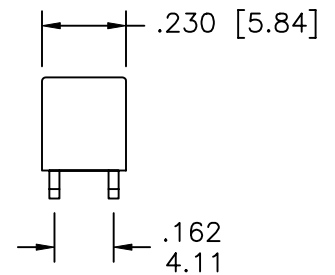
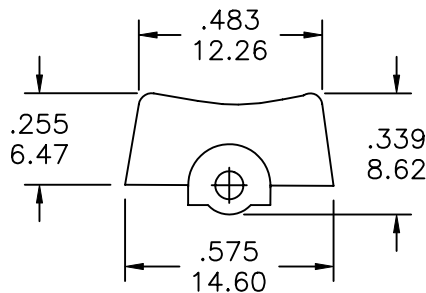
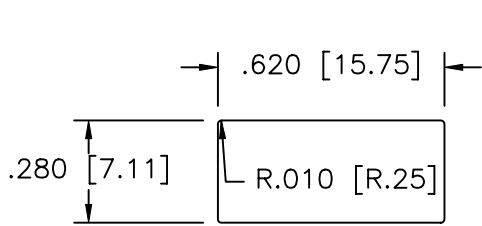
ACTUATOR OPTIONS:

A



PANEL MOUNTING - R1

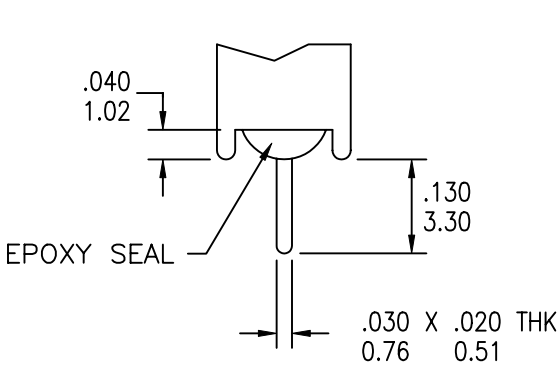
B



PANEL MOUNTING - R2

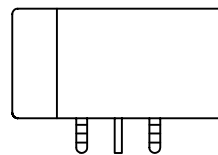
C

TERMINATION OPTIONS



C (PC MOUNT)

SINGLE POLE



CN (SNAP-IN PC MOUNT)

SINGLE POLE

D

| DESIGNED: |     |          | SYM. | DATE     | DESCRIPTION OF REVISIONS                                    | DRAWN | APPD. |
|-----------|-----|----------|------|----------|---|-------|-------|
| DRAWN:    | RB  | 07/12/01 | ▲    | 07.12.01 | NEW   | RB    | TF    |
| CHECKED:  | GAT | 10/21/08 | ▲    | 07.03.07 | Recreated spec in Cad. Added Actuator options in PN builder | GAT   | JF    |
| APPROVED: | JF  | 10/21/08 | ▲    | 10.21.08 | Added CN - snap-in PC mount option                          | GAT   | JF    |

E

|           |  |       |        |        |     |      |   |
|-----------|--|-------|--------|--------|-----|------|---|
| 3RD ANGLE |  | UNIT: | IN[mm] | SCALE: | 2:1 | REV. | C |
|-----------|--|-------|--------|--------|-----|------|---|



|                            |                |
|----------------------------|----------------|
| TOLERANCE:                 | PART NO:       |
| TO 1 DECIMAL PLACE: ± .2   | SSSR-RS6-XXXXE |
| TO 2 DECIMAL PLACES: ± .10 | TITLE:         |
| AS ANGLES:                 | ROCKER SWITCH  |
| SHEET:                     | 3 OF 3         |