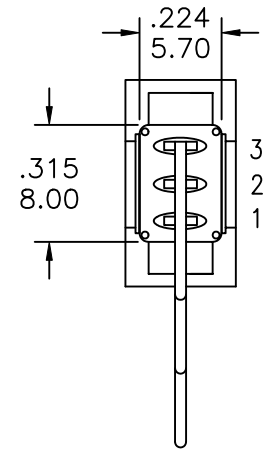
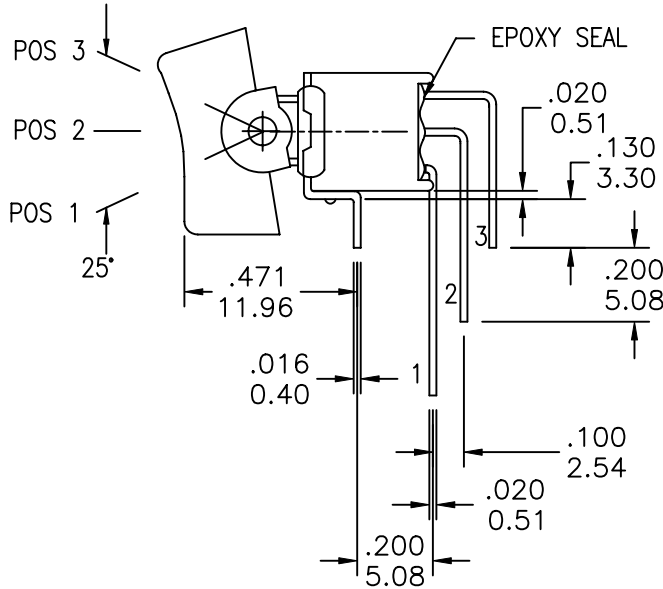
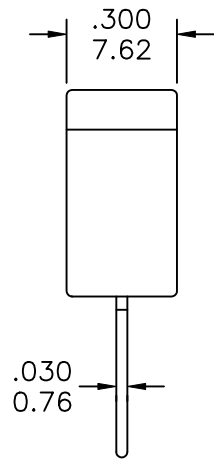
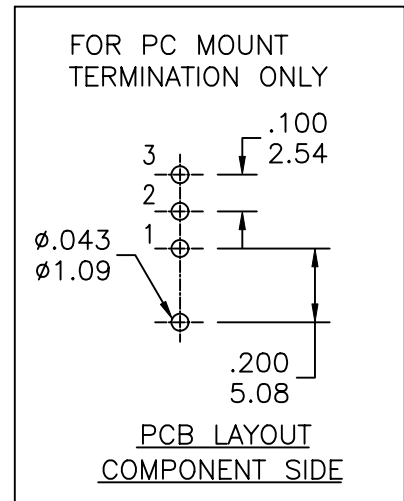


COMPONENT SPECIFICATION

USE OR REPRODUCTION OF THIS DRAWING FOR THE PURPOSE OF MANUFACTURING THIS ARTICLE OR ANY ARTICLES SHOWN FOR ANY PURPOSE IS STRICTLY PROHIBITED WITHOUT WRITTEN PERMISSION FROM SENIOR INDUSTRIES, INC.



MODEL NO.	SWITCHING POSITION		
RS8	ON	NONE	ON
CONN. TERMS	2-3	OPEN	2-1
SCHEMATIC	SPDT 2 Comm.		



DESIGNED:			SYM.	DATE	DESCRIPTION OF REVISIONS	DRAWN	APPD.
DRAWN:	RB	07/12/01		07.12.01	NEW	RB	TF
CHECKED:	GAT	07/05/07		07.03.07	Recreated spec in Cad. Added Actuator options in PN builder	GAT	JF
APPROVED:	JF	07/05/07					

3RD ANGLE		UNIT:	IN[mm]	SCALE:	2:1	REV.	B
-----------	--	-------	--------	--------	-----	------	---



TOLERANCE:	PART NO:	SSSR-RS8-XXCXE
TO 1 DECIMAL PLACE: ± .2	TITLE:	ROCKER SWITCH
TO 2 DECIMAL PLACES: ± .10		
AS ANGLES:		
SHEET:		1 OF 3

1

2

3

4

COMPONENT
SPECIFICATIONUSE OR REPRODUCTION OF THIS DRAWING FOR THE PURPOSE OF MANUFACTURING THIS
ARTICLE OR ANY ARTICLES SHOWN FOR ANY PURPOSE IS STRICTLY PROHIBITED WITHOUT
WRITTEN PERMISSION FROM SENIOR INDUSTRIES, INC.SPECIFICATIONSELECTRICAL

CONTACT RATING:

SILVER: 3A @ 120 VAC OR 28 VDC, 1A @ 250 VAC

GOLD: 0.4 VA MAX. @ 20 V MAX. (AC OR DC)

CONTACT RESISTANCE: 20 MILLIOHMS MAX.

INSULATION RESISTANCE: 1,000 MEGOHMS MIN. AT 500 VDC

DIELECTRIC STRENGTH: 1,000 VRMS

MECHANICAL

OPERATING LIFE: 30,000 CYCLES

ENVIRONMENTAL

OPERATING TEMPERATURE: -30°C TO +85°C

MATERIAL

CASE: GLASS FILLED NYLON 6/6, UL94V-0

ACTUATOR: NYLON, INTERNAL O-RING SEAL STANDARD

BUSHING: GLASS FILLED NYLON 6/6, UL94V-0

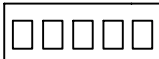





SUPPORT: BRASS, TIN PLATED

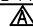
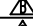
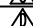


CONTACT/TERMINALS: COPPER ALLOY, SILVER OR GOLD PLATED

REGULATORY

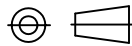
UL AND CANADA RECOGNIZED COMPONENT. UL FILE NO. E173084.

PART NUMBER BUILDER:

SERIES	MODEL NO.	ACTUATOR	ACTUATOR COLOR	TERMINATION	CONTACT PLATING	SEAL
SSSR -		- 				
	RS8	R1 - 7.62 wide (STD) R2 - 5.84 wide	1 - BLUE 2 - RED 3 - BLACK (STD) 4 - BROWN 5 - GREEN 6 - WHITE 7 - GRAY 8 - ORANGE 9 - YELLOW 0 - VIOLET	C (PC MOUNT)	Q (SILVER) R (GOLD)	E (EPOXY)

DESIGNED:	DRAWN:	CHECKED:	APPROVED:	SYM.	DATE	DESCRIPTION OF REVISIONS	DRAWN	APPD.
	RB	GAT	JF		07.12.01	NEW	RB	TF
					07.03.07	Recreated spec in Cad. Added Actuator options in PN builder	GAT	JF
					.			
					.			
					.			

3RD ANGLE



UNIT:

IN[mm]

SCALE:

REV.

B

**SENIOR
INDUSTRIES, INC.**

TOLERANCE:

TO 1 DECIMAL PLACE: ±

TO 2 DECIMAL PLACES: ±

AS ANGLES:

SHEET:

PART NO:

SSSR-RS8-XXCXE

TITLE:

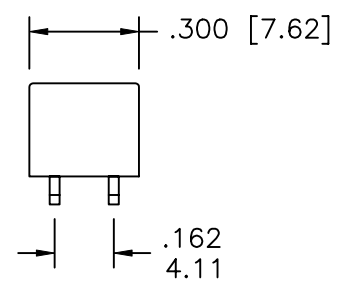
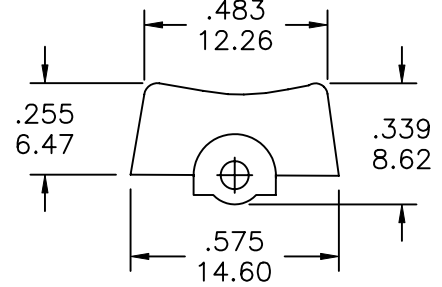
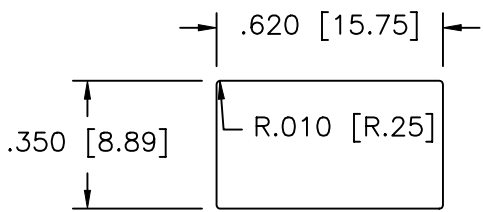
ROCKER SWITCH

2 OF 3

1	2	3	4
COMPONENT SPECIFICATION	USE OR REPRODUCTION OF THIS DRAWING FOR THE PURPOSE OF MANUFACTURING THIS ARTICLE OR ANY ARTICLES SHOWN FOR ANY PURPOSE IS STRICTLY PROHIBITED WITHOUT WRITTEN PERMISSION FROM SENIOR INDUSTRIES, INC.		

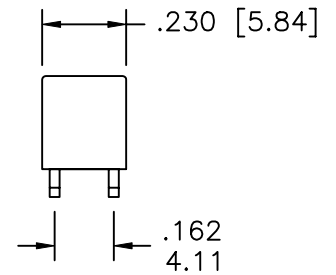
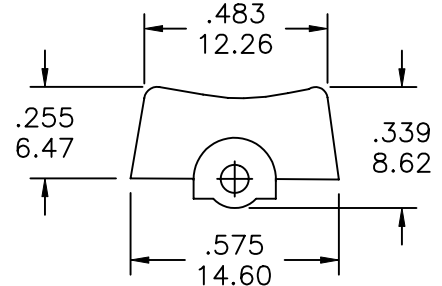
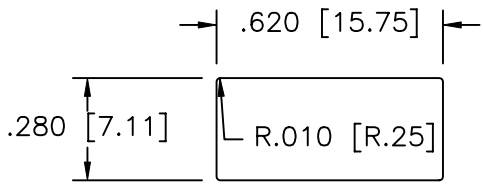
A

ACTUATOR OPTIONS:



PANEL MOUNTING - R1

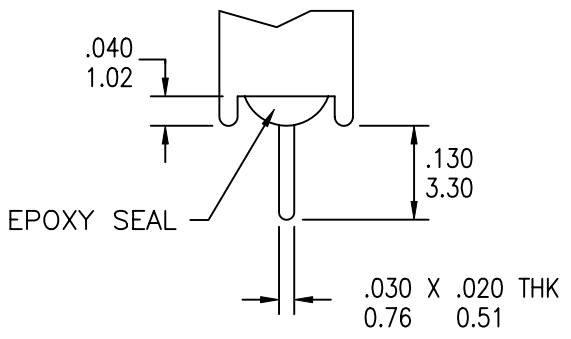
B



PANEL MOUNTING - R2

C

TERMINATION OPTIONS



C (PC MOUNT)

SINGLE POLE

D

DESIGNED:	DRAWN:	CHECKED:	APPROVED:	SYM.	DATE	DESCRIPTION OF REVISIONS	DRAWN	APPD.
	RB	GAT	JF	△	07.12.01	NEW	RB	TF
				△	07.03.07	Recreated spec in Cad. Added Actuator options in PN builder	GAT	JF
				△	.			
				△	.			

E

3RD ANGLE		UNIT:	IN[mm]	SCALE:	2:1	REV.	B
-----------	--	-------	--------	--------	-----	------	---



TOLERANCE:	PART NO:
TO 1 DECIMAL PLACE: ± .2	SSSR-RS8-XXCXE
TO 2 DECIMAL PLACES: ± .10	TITLE:
AS ANGLES:	ROCKER SWITCH
SHEET:	3 OF 3