

1

2

3

4

COMPONENT SPECIFICATION

USE OR REPRODUCTION OF THIS DRAWING FOR THE PURPOSE OF MANUFACTURING THIS ARTICLE OR ANY ARTICLES SHOWN FOR ANY PURPOSE IS STRICTLY PROHIBITED WITHOUT WRITTEN PERMISSION FROM SENIOR INDUSTRIES, INC.

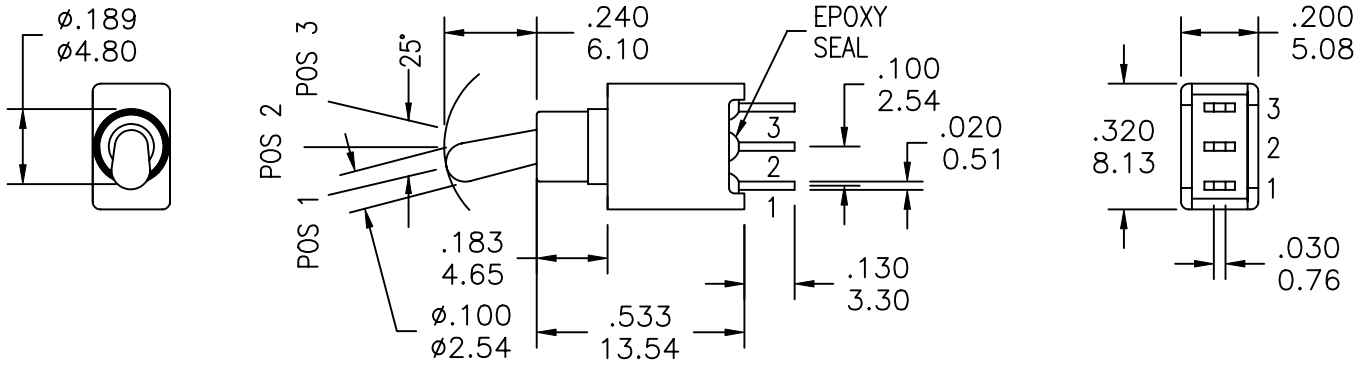
A

B

C

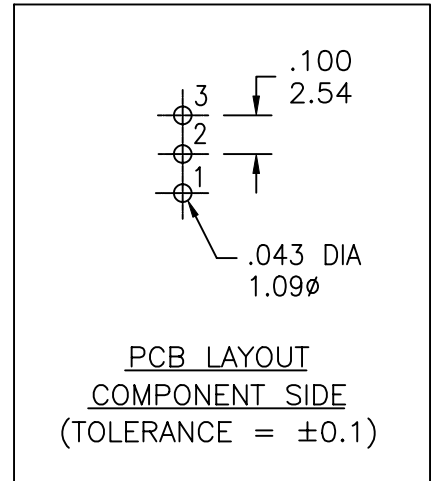
D

E



SSST-90XX-TECXE SHOWN

MODEL NO.	SWITCHING POSITION		
901	ON	NONE	ON
901A	ON	NONE	MOM
902	ON	OFF	ON
902A	MOM	OFF	MOM
902B	ON	OFF	MOM
CONN. TERMS	2-3	OPEN	2-1
SCHEMATIC	SPDT		



NON-SHORTING TYPE

RoHS COMPLIANT

DESIGNED:			SYM.	DATE	DESCRIPTION OF REVISIONS	DRAWN	APPD.
DRAWN:	RB	03/13/01		03.13.01	NEW	RB	JF
CHECKED:	GAT	12/19/07		12.19.07	Updated general dims. Corrected PN Builder options. New indicator	GAT	JF
APPROVED:	JF	12/19/07		.	.		

3RD ANGLE		UNIT:	IN/mm	SCALE:	2:1	REV.	B
-----------	--	-------	-------	--------	-----	------	---



TOLERANCE:	PART NO:	SEE CHART
TO 1 DECIMAL PLACE: $\pm .2$	TITLE:	SSST 901/902 SEALED TOGGLE SWITCH
TO 2 DECIMAL PLACES: $\pm .10$		
AS ANGLES: $\pm 1/2^\circ$		
SHEET:		1 OF 4

COMPONENT SPECIFICATION

USE OR REPRODUCTION OF THIS DRAWING FOR THE PURPOSE OF MANUFACTURING THIS ARTICLE OR ANY ARTICLES SHOWN FOR ANY PURPOSE IS STRICTLY PROHIBITED WITHOUT WRITTEN PERMISSION FROM SENIOR INDUSTRIES, INC.

SPECIFICATIONS

ELECTRICAL

CONTACT RATING:

SILVER: 3A @ 120 VAC OR 28 VDC, 1A @ 250 VAC

GOLD: 0.4 VA MAX. @ 20 V MAX. (AC OR DC)

CONTACT RESISTANCE: 20 MILLIOHMS MAX.

INSULATION RESISTANCE: 1,000 MEGOHMS MIN. AT 500 VDC

DIELECTRIC STRENGTH: 1,000 VRMS

MECHANICAL

LIFE: 30,000 CYCLES

ENVIRONMENTAL

OPERATING TEMPERATURE: -30°C TO +85°C

MATERIAL

CASE: GLASS FILLED NYLON 66, UL94V-0

ACTUATOR: BRASS, CHROME PLATED, INTERNAL O-RING SEAL STANDARD

BUSHING: GLASS FILLED NYLON 66, UL94V-0

SUPPORT: BRASS, TIN PLATED

CONTACT/TERMINALS: COPPER ALLOY, SILVER OR GOLD PLATED

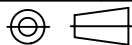
PART NUMBER BUILDER:

SERIES	MODEL NO.	ACTUATOR	BUSHING	TERMINATION	CONTACT PLATING	SEAL	VERTICAL SUPPORT BRACKET
SSST -	<input type="text"/>	- <input type="text"/>	<input type="text"/>	<input type="text"/>	<input type="text"/>	<input type="text"/>	<input type="text"/>
	901	S (.400 HIGH)	E (.183 HIGH)	C (PC MOUNT)	Q (SILVER)	BLANK	BLANK
	901A	T (.240 HIGH)	G (.196 HIGH)		R (GOLD)	E (EPOXY)	S20
	902	U (.320 HIGH)					
	902A	V (.550 HIGH)					
	902B	W (PLASTIC, ANTI-STATIC .400 HIGH)					
		Z (PLASTIC, ANTI-STATIC .240 HIGH)					

RoHS COMPLIANT

DESIGNED:			SYM.	DATE	DESCRIPTION OF REVISIONS	DRAWN	APPD.
			▲	03.13.01	NEW	RB	JF
DRAWN:	RB	03/13/01	▲	12.19.07	Updated general dims. Corrected PN Builder options. New indicator	GAT	JF
CHECKED:	GAT	12/19/07	▲	.			
APPROVED:	JF	12/19/07	▲	.			

3RD ANGLE



UNIT:

IN/mm

SCALE:

REV.

B



SENIOR INDUSTRIES, INC.

TOLERANCE:

TO 1 DECIMAL PLACE: ±

TO 2 DECIMAL PLACES: ±

AS ANGLES: ±

SHEET:

PART NO:

SEE CHART

TITLE:

SSST 901/902 SEALED TOGGLE SWITCH

2 OF 4

1

2

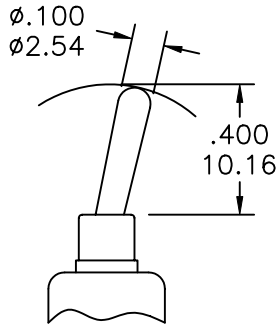
3

4

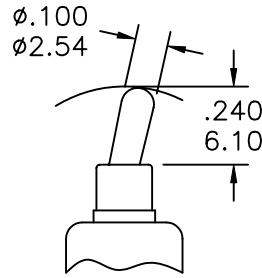
COMPONENT SPECIFICATION

USE OR REPRODUCTION OF THIS DRAWING FOR THE PURPOSE OF MANUFACTURING THIS ARTICLE OR ANY ARTICLES SHOWN FOR ANY PURPOSE IS STRICTLY PROHIBITED WITHOUT WRITTEN PERMISSION FROM SENIOR INDUSTRIES, INC.

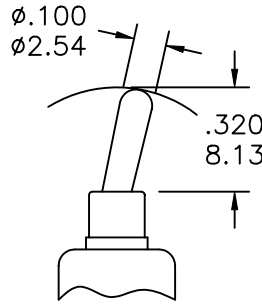
ACTUATOR OPTIONS



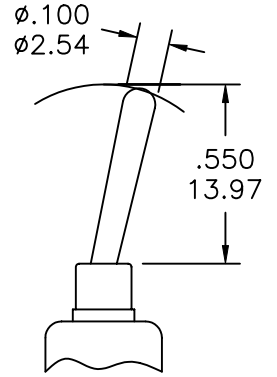
S



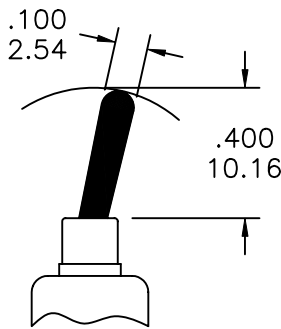
T



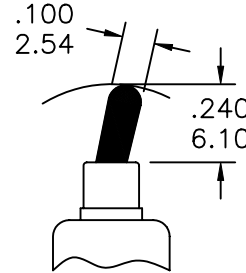
U



V



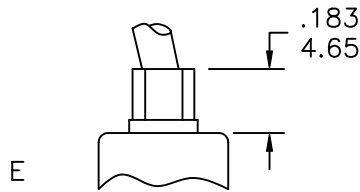
W



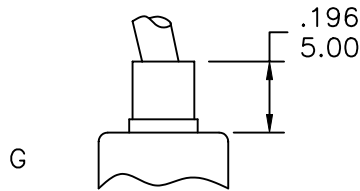
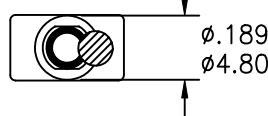
Z

PLASTIC ACTUATOR

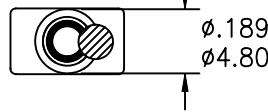
BUSHING OPTIONS



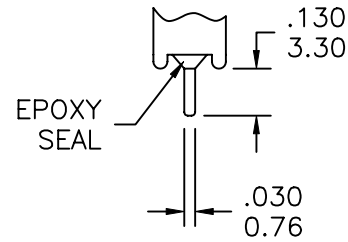
E



G



TERMINATION OPTIONS

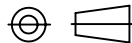


C (PC MOUNT)

RoHS COMPLIANT

DESIGNED:			SYM.	DATE	DESCRIPTION OF REVISIONS	DRAWN	APPD.
			▲	03.13.01	NEW	RB	JF
DRAWN:	RB	03/13/01	▲	12.19.07	Updated general dims. Corrected PN Builder options. New indicator	GAT	JF
CHECKED:	GAT	12/19/07	▲	.			
APPROVED:	JF	12/19/07	▲	.			

3RD ANGLE



UNIT:

IN/mm

SCALE:

2:1

REV.

B



TOLERANCE:

TO 1 DECIMAL PLACE: ±.2

TO 2 DECIMAL PLACES: ±.10

AS ANGLES: ±1/2°

SHEET:

PART NO:

SEE CHART

TITLE:

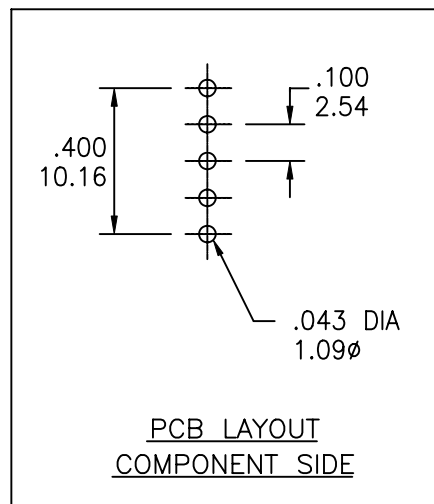
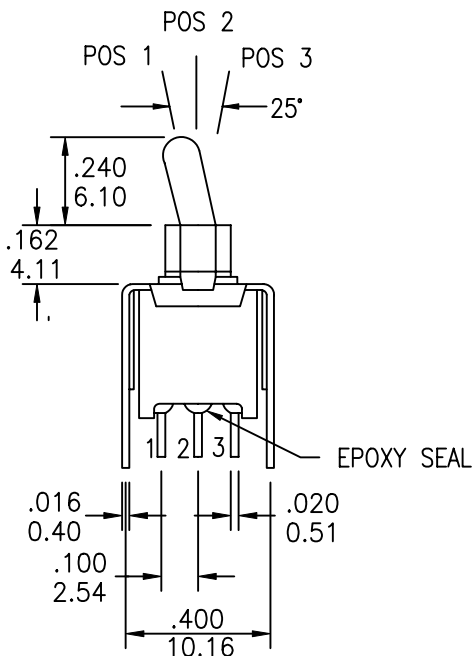
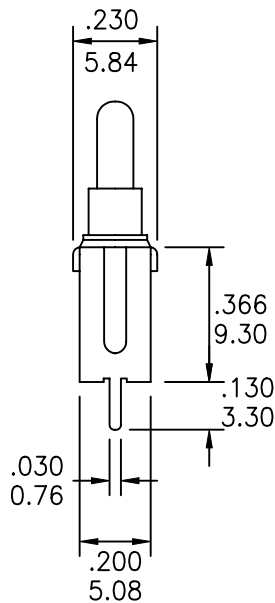
SSST 901/902 SEALED TOGGLE SWITCH

3 OF 4

COMPONENT SPECIFICATION

USE OR REPRODUCTION OF THIS DRAWING FOR THE PURPOSE OF MANUFACTURING THIS ARTICLE OR ANY ARTICLES SHOWN FOR ANY PURPOSE IS STRICTLY PROHIBITED WITHOUT WRITTEN PERMISSION FROM SENIOR INDUSTRIES, INC.

VERTICAL SUPPORT BRACKET:

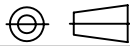


S20

RoHS COMPLIANT

DESIGNED:			SYM.	DATE	DESCRIPTION OF REVISIONS	DRAWN	APPD.
			▲	03.13.01	NEW	RB	JF
DRAWN:	RB	03/13/01	▲	12.19.07	Updated general dims. Corrected PN Builder options. New indicator	GAT	JF
CHECKED:	GAT	12/19/07	▲	.			
APPROVED:	JF	12/19/07	▲	.			

3RD ANGLE



UNIT:

IN/mm

SCALE:

2:1

REV.

B



TOLERANCE:

TO 1 DECIMAL PLACE: ±.2

TO 2 DECIMAL PLACES: ±.10

AS ANGLES: ±1/2°

SHEET:

PART NO:

SEE CHART

TITLE:

SSST 901/902 SEALED TOGGLE SWITCH

4 OF 4