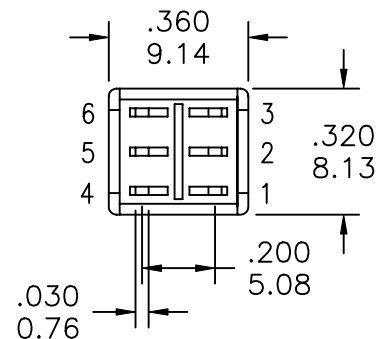
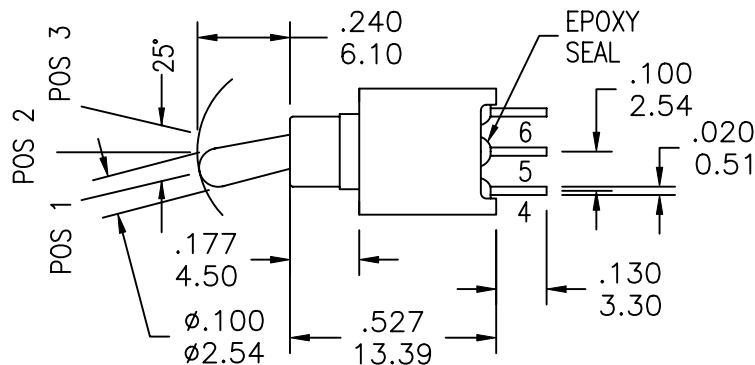
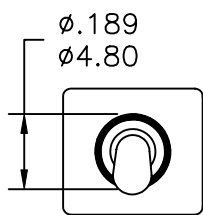


1

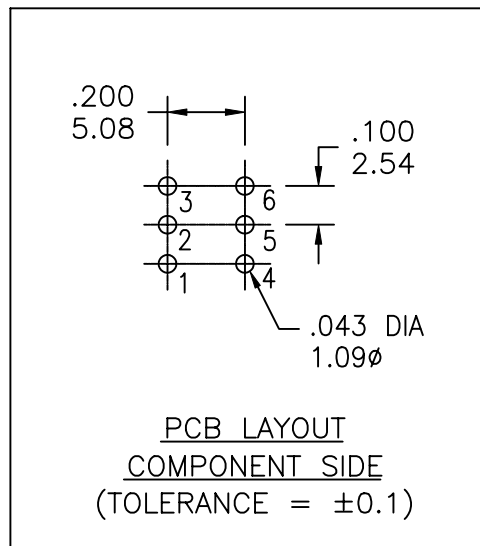
2

3

4

COMPONENT
SPECIFICATIONUSE OR REPRODUCTION OF THIS DRAWING FOR THE PURPOSE OF MANUFACTURING THIS
ARTICLE OR ANY ARTICLES SHOWN FOR ANY PURPOSE IS STRICTLY PROHIBITED WITHOUT
WRITTEN PERMISSION FROM SENIOR INDUSTRIES, INC.SSST-90XX-TECXE SHOWN

MODEL NO.	SWITCHING POSITION		
903	ON	NONE	ON
903A	ON	NONE	MOM
904	ON	OFF	ON
CONN. TERMS	2-3 5-6	OPEN	2-1 5-4
SCHEMATIC			

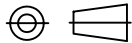


NON-SHORTING TYPE

RoHS COMPLIANT

DESIGNED:			SYM.	DATE	DESCRIPTION OF REVISIONS	DRAWN	APPD.
DRAWN:	RB	03/13/01	△	03.13.01	NEW	RB	JF
CHECKED:	GAT	12/12/07	△	12.12.07	Updated general dims. Corrected PN Builder options. New indicator	GAT	JF
APPROVED:	JF	12/12/07	△				

3RD ANGLE



UNIT:

IN/mm

SCALE:

2:1

REV.

B

**SENIOR
INDUSTRIES, INC.**

TOLERANCE:

TO 1 DECIMAL PLACE: ±.2

TO 2 DECIMAL PLACES: ±.10

AS ANGLES: ±1/2°

SHEET:

PART NO:

SEE CHART

TITLE:

SSST 903/904 SEALED
TOGGLE SWITCH

1 OF 4

1

2

3

4

COMPONENT
SPECIFICATIONUSE OR REPRODUCTION OF THIS DRAWING FOR THE PURPOSE OF MANUFACTURING THIS
ARTICLE OR ANY ARTICLES SHOWN FOR ANY PURPOSE IS STRICTLY PROHIBITED WITHOUT
WRITTEN PERMISSION FROM SENIOR INDUSTRIES, INC.SPECIFICATIONSELECTRICAL

CONTACT RATING:

SILVER: 3A @ 120 VAC OR 28 VDC, 1A @ 250 VAC

GOLD: 0.4 VA MAX. @ 20 V MAX. (AC OR DC)

CONTACT RESISTANCE: 20 MILLIOHMS MAX.

INSULATION RESISTANCE: 1,000 MEGOHMS MIN. AT 500 VDC

DIELECTRIC STRENGTH: 1,000 VRMS

MECHANICAL

LIFE: 30,000 CYCLES

ENVIRONMENTAL

OPERATING TEMPERATURE: -30°C TO +85°C

MATERIAL

CASE: GLASS FILLED NYLON 66, UL94V-0

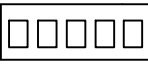

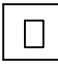
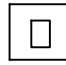



ACTUATOR: BRASS, CHROME PLATED, INTERNAL O-RING SEAL STANDARD

BUSHING: GLASS FILLED NYLON 66, UL94V-0

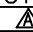
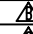
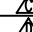
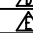
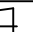
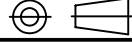
SUPPORT: BRASS, TIN PLATED

CONTACT/TERMINALS: COPPER ALLOY, SILVER OR GOLD PLATED

PART NUMBER BUILDER:

SERIES	MODEL NO.	ACTUATOR	BUSHING	TERMINATION	CONTACT PLATING	SEAL	VERTICAL SUPPORT BRACKET
SSST -		- 					
	903	S (.400 HIGH)	E (.177 HIGH)	C (PC MOUNT)	Q (SILVER)	BLANK	BLANK
	903A	T (.240 HIGH)			R (GOLD)	E (EPOXY)	S20
	904	U (.320 HIGH)					
		V (.550 HIGH)					
		W (PLASTIC, ANTI-STATIC .400 HIGH)					
		Z (PLASTIC, ANTI-STATIC .240 HIGH)					

RoHS COMPLIANT

DESIGNED:			SYM.	DATE	DESCRIPTION OF REVISIONS	DRAWN	APPD.
DRAWN:	RB	03/13/01		03.13.01	NEW	RB	JF
CHECKED:	GAT	12/12/07		12.12.07	Updated general dims. Corrected PN Builder options. New indicator	GAT	JF
APPROVED:	JF	12/12/07		.			
				.			
				.			
3RD ANGLE		UNIT:	IN/mm	SCALE:		REV.	B



TOLERANCE:

TO 1 DECIMAL PLACE: ±

TO 2 DECIMAL PLACES: ±

AS ANGLES: ± °

SHEET:

PART NO:

SEE CHART

TITLE:

SSST 903/904 SEALED
TOGGLE SWITCH

2 OF 4

1

2

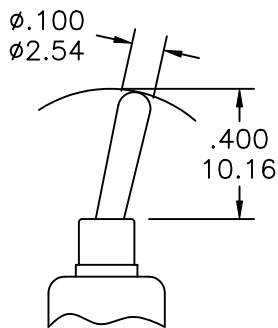
3

4

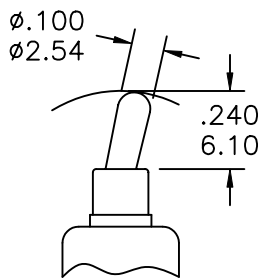
COMPONENT SPECIFICATION

USE OR REPRODUCTION OF THIS DRAWING FOR THE PURPOSE OF MANUFACTURING THIS ARTICLE OR ANY ARTICLES SHOWN FOR ANY PURPOSE IS STRICTLY PROHIBITED WITHOUT WRITTEN PERMISSION FROM SENIOR INDUSTRIES, INC.

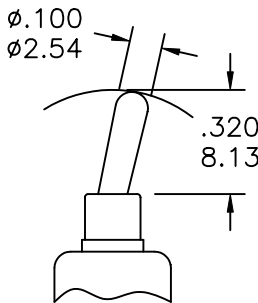
ACTUATOR OPTIONS



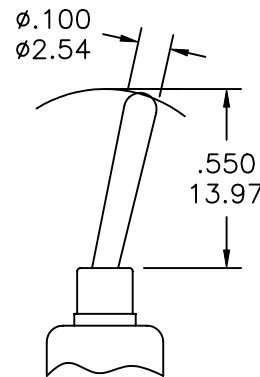
S



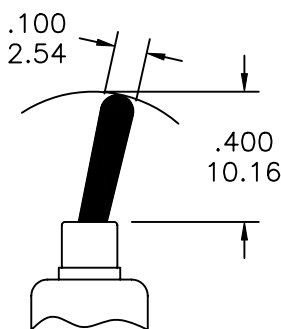
T



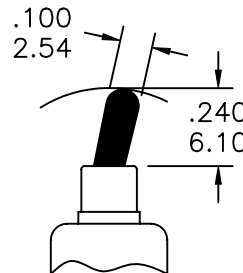
U



V



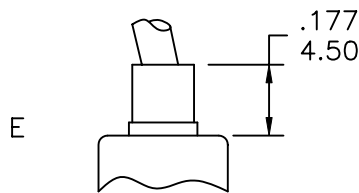
W



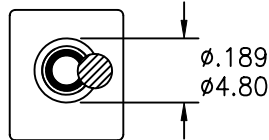
Z

PLASTIC ACTUATOR

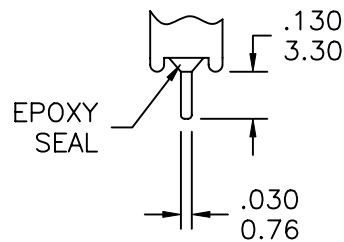
BUSHING OPTIONS



E



TERMINATION OPTIONS

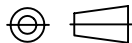


C (PC MOUNT)

RoHS COMPLIANT

DESIGNED:			SYM.	DATE	DESCRIPTION OF REVISIONS	DRAWN	APPD.
			▲	03.13.01	NEW	RB	JF
DRAWN:	RB	03/13/01	▲	12.12.07	Updated general dims. Corrected PN Builder options. New indicator	GAT	JF
CHECKED:	GAT	12/12/07	▲	.			
APPROVED:	JF	12/12/07	▲	.			

3RD ANGLE



UNIT:

IN/mm

SCALE:

2:1

REV.

B



SENIOR INDUSTRIES, INC.

TOLERANCE:

TO 1 DECIMAL PLACE: ±.2

TO 2 DECIMAL PLACES: ±.10

AS ANGLES: ±1/2°

SHEET:

PART NO:

SEE CHART

TITLE:

SSST 903/904 SEALED TOGGLE SWITCH

3 OF 4

1

2

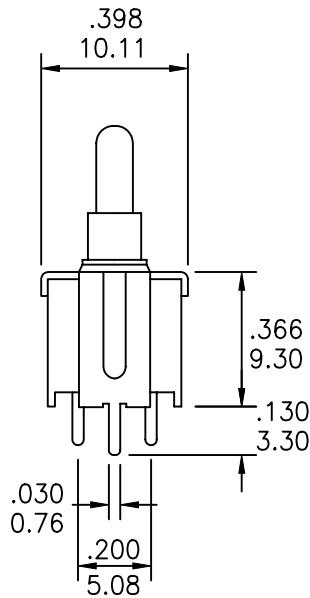
3

4

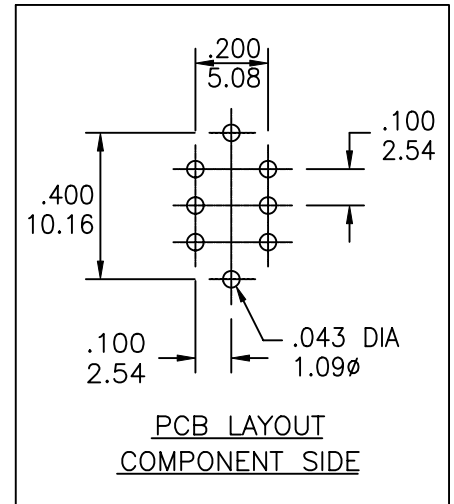
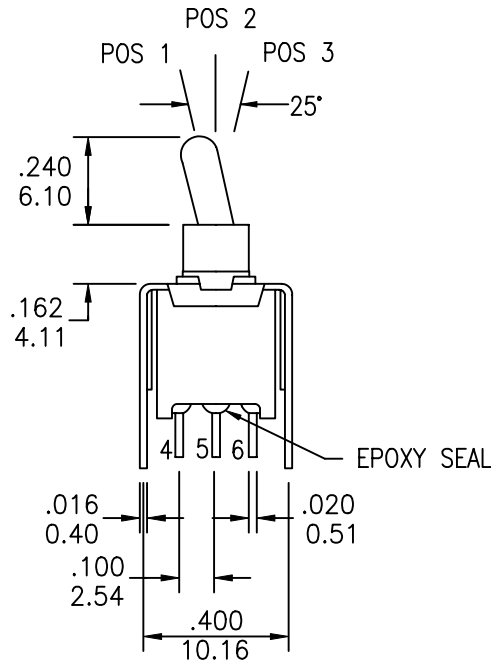
COMPONENT SPECIFICATION

USE OR REPRODUCTION OF THIS DRAWING FOR THE PURPOSE OF MANUFACTURING THIS ARTICLE OR ANY ARTICLES SHOWN FOR ANY PURPOSE IS STRICTLY PROHIBITED WITHOUT WRITTEN PERMISSION FROM SENIOR INDUSTRIES, INC.

VERTICAL SUPPORT BRACKET:



S20



RoHS COMPLIANT

DESIGNED:			SYM.	DATE	DESCRIPTION OF REVISIONS	DRAWN	APPD.
			▲	03.13.01	NEW	RB	JF
DRAWN:	RB	03/13/01	▲	12.12.07	Updated general dims. Corrected PN Builder options. New indicator	GAT	JF
CHECKED:	GAT	12/12/07	▲	.			
APPROVED:	JF	12/12/07	▲	.			

3RD ANGLE		UNIT:	IN/mm	SCALE:	2:1	REV.	B
-----------	--	-------	-------	--------	-----	------	---



TOLERANCE:	PART NO:	SEE CHART
TO 1 DECIMAL PLACE: ±.2	TITLE:	SSST 903/904 SEALED TOGGLE SWITCH
TO 2 DECIMAL PLACES: ±.10		
AS ANGLES: ±1/2°		
SHEET:		4 OF 4