

Small Cell & Wireless Product Catalog



MacLeanTM
POWER SYSTEMS

NETWORK SOLUTIONS

Products for all your Small Cell and Wireless Site Installations

Our Heritage

MacLean Senior Industries (MSI), offers a comprehensive line of products for the installation of small cell and wireless sites. MSI has proudly served the communications market for over 40 years, creating products and developing solutions to meet the specific requirements of our customers.

Design/Product Development

If the product you need is not listed in our catalog or on our web site, please contact us. Experienced MSI professionals with a problem solving attitude, backed by the most recent technological capabilities, will respond to your unique product need with an innovative and cost effective solution that can be produced to meet your budget and timetable. With over 50 patents and the track record of developing hundreds of proven products, you can trust us to provide exactly what you need, when you need it.

Worldwide Manufacturing Resources

MSI is an American company with global manufacturing capabilities. We have 13 production facilities worldwide, including 7 factories in the U.S. alone. We can ensure that your product needs will be met when you need them. Our global manufacturing strategy allows for the optimal combination of quality, cost and delivery.

Customer Service/Distribution

MSI has main distribution hubs in Wood Dale, Illinois and Memphis, Tennessee, making sure that parts are available when you need them.

Quality You Can Depend On

MSI is ISO 9001 certified. We won't produce a product that doesn't meet our high quality and reliability standards, per the product specifications. If you have a question about any MSI product, we will be there to respond to it.

For technical support, installation information and special requirements please contact our Inside Sales Team at: 1-800-350-1650, or via e-mail at: sales@macleansenior.com.



MACLEAN SENIOR INDUSTRIES

MacLean Senior Industries, LLC

610 Pond Drive, Wood Dale, IL 60191

Phone: **800-350-1650** Fax: **630-350-1654**

Web: **www.macleansenior.com**

E-mail: **sales@macleansenior.com**

ANCHORS

Manta Ray	4
Power Hub	6
CabinetPile™ Helical Pile Foundation System	8

BANDING

Stainless Steel	9
Buckles	9
Mounts	10
Delta Cable Support System	11

BOLTS

'A' Cable Suspension	12
Brace	12
Machine	13
Double Arming	15

BRACKETS

Adjustable Pole Top Bracket	16
Pole Top Extension Bracket	17
Offset Bracket	17
Fiberglass Extension Arm	18
Solar Panel Bracket	19

BONDING & GROUNDING PRODUCTS

Bond Braid	20
Bonding Harnesses	20
Distribution Connectors	21
Ground Rod Clamps	21
Lugs	
Compression	22
Ground	22
Split Bolts	23
Universal Ground Straps	23

CABLE MANAGEMENT & STRAPS

Cable Management	24
Cable Straps	24

GUARDS

Plastic Cable Guards	25
Hex Head Lag Screws	25
Steel Cable Guards	26
Cable Guard Straps	26
Plastic Ground Wire Molding	27

HOOKS

Drive	27
-------	----

NUTS

Lock	28
Square	28

POLE TOP EXTENSION

Fiberglass	29
------------	----

WASHERS

Round	30
Lock	30
Spring Formed	31
Square Flat	31
Square Curved	31

MANTA RAY® ANCHOR

- Pneumatically driven, no digging, no damage, no soil disturbance
- Anchors proof loaded to exact capacity required during installation
- Fast, easy installation
- Lightweight, portable equipment
- Substantial time and cost savings

Part Number	Model Number	Description
20221-UT-II	MR-4-UT-II	12M guy capacity in class 1-3 soils. Used with 5/8" Utility Anchor Rod. 6 per carton, carton weight: 32 Lbs.
20210-UT-II	MR-3-UT-II	18M guy capacity in class 1-5 soils. 12M guy capacity in class 1-6 soils. Used with 5/8" Utility Anchor Rod. 6 per carton, carton weight: 44 Lbs.
20199-UT-II	MR-2-UT-II	32M guy capacity in class 1-3 soils. 18M and 12M guy capacity in class 4-5 soils. Used with 3/4" or 1" Utility Anchor Rod. 4 per carton, carton weight: 43 Lbs.
20036-UT-II	MR-1-UT-II	32M guy capacity in class 3-5 soils. 18M and 12M guy capacity in class 6 soils. Used with 1" Utility Anchor Rod. 4 per carton, carton weight: 52 Lbs.
20229-UT-II	MR-SR-UT-II	32M guy capacity in class 5-6 soils. 18M and 12M guy capacity in class 7-8 soils. Used with 1" Utility Anchor Rod. 2 per carton, carton weight: 42 Lbs.
20031	MK-B-UT-II	32M guy capacity in class 7-8 soils. Not driven less than 14' deep to load lock. Used with 1" Utility Anchor Rod. 1 per carton, carton weight: 69 Lbs.



MR-4-UT-II



MR-3-UT-II



MR-2-UT-II



MR-1-UT-II



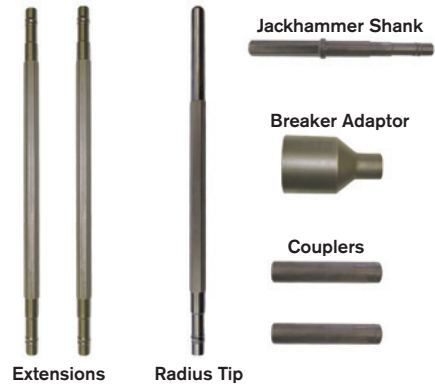
MR-SR-UT-II



MK-B-UT-II

MANTA RAY® EXTENSION

Part Number	Model Number	Description	Carton Qty	Carton Weight
50233	SG-2	Drive steel extension piece - 33"	1	13 Lbs.
50236	SG-3	Radius drive tip - 30"	1	12 Lbs.
50240	SG-4	Drive steel coupler piece - Standard	1	4 Lbs.
51014	SG-4MD	Drive steel coupler piece - Medium Duty	1	5 Lbs.



MANTA RAY® TOOL

Part Number	Model Number	Description	Carton Qty	Carton Weight
50242	SG-X	Drive steel extractor bar	1	2 Lbs.
50243	SGC-14	Kit for 1 1/4" x 6" chuck hammer/breakers	1	61 Lbs.
50244	SGC-18	Kit for 1 1/8" x 6" chuck hammer/breakers	1	59 Lbs.
50231	SG-14	1 1/4" hex x 16" shank, 15 1/2" overall length	1	7 Lbs.
50232	SG-18	1 1/8" hex x 16" shank, 15 1/2" overall length	1	6 Lbs.
50127	LL-1	Complete Anchor Locker Assembly	1	148 Lbs.
50364	HB90-14CE	Hydraulic Anchor Driving Hammer with 1 1/4" x 6" chuck, 90# class	1	89 Lbs.
50087	HC-16-25	25' Hydraulic Hose with HTMA II coupler, Minimum of 2 Required, use 4	1	9 Lbs.
50382	GPU18-8CE	Portable Hydraulic Power Unit, 18 Hp, 5-8 GPM, 2000 PSI	1	316 Lbs.
50084	GB-1	Drive steel carrying bag	1	2 Lbs.

KIP (1,000lbs)/KN* Capacity Chart Based on Standard 7 ft (2.1 m) Utility Anchor Rod Depth in Soil

Soil Type	Common Soil Type Description	Type Blow count "N" per ASTM-D 1586	MR-4		MR-3		MR-2		MR-1		MR-SR		MK-8	
			KIPS	KN	KIPS	KN	KIPS	KN	KIPS	KN	KIPS	KN	KIPS	KN
ULTIMATE STRENGTH			16	71	20	89	40	178	40	178	40	178	40	178
1/2	Dense fine compacte sand:Very hard silts and clays	45-60	9-16	40-71	17-20	76-89	21-28	93-125	36-40	160-178	N/A	N/A	N/A	N/A
			(2,3,4)		(2,3,4)		(2,4)		(1,2,3)		(5)		(5)	
2/3	Dense clays, sands and gravel: Hard silts and clays	35-50	6-9	27-40	12-18	53-80	15-22	67-98	24-36	107-160	32-40	142-178	N/A	N/A
			(4)		(4)		(2,4)		(2,4)		(2,3,4)		(5)	
3/4	Medium dense sandy gravel: Very stiff to hard silts and clays	24-40	4.5-6	20-25	9-14	40-62	12-18	53-80	18-20	80-89	24-34	107-151	N/A	N/A
			(4)		(4)		(4)		(4)		(2,4)		(5)	
5/6	Medium dense coarse sand and sandy gravel: Stiff to very still silts and clays	14-25	3.5-4.5	16-20	7-9	31-40	9-12	40-53	15-20	67-89	18-24	80-107	N/A	N/A
			(4)		(4)		(4)		(4)		(4)		(5)	
6/7	Loose to medium dense fine to coarse sand: Firm to stiff clays and silts	7-14	2.5-4.0	11-18	5-8	22-36	7-10	31-44	10-15	44-67	14-18	62-80	20-24	89-107
			(4)		(4)		(4)		(4)		(4)		(4)	
7/8	Loose find sand: Alluvium Soft-firm clays: Varied clays, fill, fine saturated silty sand	4-8	1.5-2.5	7-11	3-5	13-22	5-8	22-36	8-12	36-53	9-14	40-62	13-20	58-89
			(4,6)		(4,6)		(4,6)		(4,6)		(4,6)		(4,6)	
RATING Anchors are compatible with industry standard anchor rods.			Up to 12M in hard soils. Up to 6M in average soils. Dual purpose anchor. Used with 5/8" anchor rods.		Up to 12M for average/normal soils. Used with 5/8" anchor rods.		Up to 32M in hard soil. Up to 18M in average soils. Dual purpose anchor. Used with 3/4" and 1" anchor rods.		Up to 32M for average/normal soils. Used with 3/4" and 1" anchor rods.		Up to 32M for loose or wet soils. Used with 3/4" and 1" anchor rods.		Up to 32M for very loose or wet soils. Used with 3/4" and 1" anchor rods.	
PROOF LOAD Maximum anchor proof load necessary (2-1 safety factor) on anchor rod strength.			4,000 lbs - 5/8" rod		8,000 lbs - 5/8" rod		16,000 lbs - 1" rod 12,000 lbs - 3/4" rod		16,000 lbs - 1" rod 12,000 lbs - 3/4" rod		16,000 lbs - 1" rod 12,000 lbs - 3/4" rod		16,000 lbs - 1" rod 12,000 lbs - 3/4" rod	

(1) Drilled hole required to install. (2) Installation may be difficult. Pilot hole may be required. (3) Holding capacity limited by structural rating of anchors. (4) Holding capacity limited by soil failure. (5) Not recommended in these soils. (6) Wide variation in soil properties reduces prediction accuracy. Pre-construction field test recommended.

Holding capacity in KIPS and KN after anchor locking with no significant movement and no safety factor. Use this chart for estimation only. True capacity must be tested with anchor load locker.

POWER HUB-RCS SOLID HUB ANCHORS

Single Helix 6,000 Ft-Lbs Ultimate Installing Torque

Part Number	Helix Size	Tapped for Rod Size	Carton Qty	Carton Weight
D82-6	8"	5/8"	4	40 Lbs.
D84-6	8"	3/4" or 1"	4	40 Lbs.
D102-6	10"	5/8"	4	50 Lbs.
D104-6	10"	3/4" or 1"	4	50 Lbs.
D112-6	12"	5/8"	4	64 Lbs.
D114-6	12"	3/4" or 1"	4	64 Lbs.
D134-6	14"	3/4" or 1"	3	63 Lbs.



1 1/2" SOLID SQUARE HUB - FOR STANDARD INSTALLING TOOL

Single Helix 5,500 Ft-Lbs Ultimate Installing Torque

Part Number	Helix Size	Tapped for Rod Size	Carton Qty	Carton Weight
D182	8"	5/8"	4	44 Lbs.
D184	8"	3/4" or 1"	4	44 Lbs.
D1102	10"	5/8"	4	54 Lbs.
D1104	10"	3/4" or 1"	4	54 Lbs.
D1114	12"	3/4" or 1"	4	70 Lbs.
D1134	14"	3/4" or 1"	3	66 Lbs.

Single Helix 7,000 Ft-Lbs Ultimate Installing Torque

Part Number	Helix Size	Tapped for Rod Size	Carton Qty	Carton Weight
D184-7	8"	3/4" or 1"	4	41 Lbs.
D1104-7	10"	3/4" or 1"	4	62 Lbs.
D1114-7	12"	3/4" or 1"	4	67 Lbs.

ROD WITH EYENUT

- Power hub anchor rod and eyenut are assembled at the factory
- Used with solid hub or socket drive power hub screw anchors
- One part number for both the rod and eyenut simplifies material handling
- All parts hot-dip galvanized
- U.S. made versions available



5/8" Diameter - 16,000 Lbs. Ultimate Tensile Strength

Part Number	Length	Eyenut Type	Carton Qty	Carton Weight
D6231/2 S	3 1/2'	Single Guy Eye	5	18 Lbs.
D6231/2 D	3 1/2'	Double Guy Eye	5	18 Lbs.
D6231/2 T	3 1/2'	Triple Guy Eye	5	18 Lbs.
D62S	7'	Single Guy Eye	5	39 Lbs.
D62D	7'	Double Guy Eye	5	39 Lbs.
D62T	7'	Triple Guy Eye	5	44 Lbs.

3/4" Diameter - 23,000 Lbs. Ultimate Tensile Strength

Part Number	Length	Eyenut Type	Carton Qty	Carton Weight
D7531/2S	3 1/2'	Single Guy Eye	5	35 Lbs.
D7531/2D	3 1/2'	Double Guy Eye	5	35 Lbs.
D7531/2T	3 1/2'	Triple Guy Eye	5	35 Lbs.
D75S	7'	Single Guy Eye	5	58 Lbs.
D75D	7'	Double Guy Eye	5	58 Lbs.
D75T	7'	Triple Guy Eye	5	60 Lbs.

1" Diameter - 36,000 Lbs. Ultimate Tensile Strength

Part Number	Length	Eyenut Type	Carton Qty	Carton Weight
D10031/2S	3 1/2'	Single Guy Eye	2	18 Lbs.
D10031/2D	3 1/2'	Double Guy Eye	2	18 Lbs.
D10031/2T	3 1/2'	Triple Guy Eye	2	18 Lbs.
D100S	7'	Single Guy Eye	2	28 Lbs.
D100D	7'	Double Guy Eye	2	31 Lbs.
D100T	7'	Triple Guy Eye	2	37 Lbs.

ROD ONLY

- Power hub anchor rod is used with solid hub or socket drive power hub screw anchors
- All parts hot-dip galvanized

5/8" Diameter - 16,000 Lbs. Ultimate Tensile Strength

Part Number	Length	Carton Qty	Carton Weight
D6231/2	3½'	5	18 Lbs.
D62	7'	5	33 Lbs.

3/4" Diameter - 23,000 Lbs. Ultimate Tensile Strength

Part Number	Length	Carton Qty	Carton Weight
D7531/2	3½'	5	26 Lbs.
D75	7'	5	49 Lbs.

1" Diameter - 36,000 Lbs. Ultimate Tensile Strength

Part Number	Length	Carton Qty	Carton Weight
D10031/2	3½'	2	18 Lbs.
D100	7'	2	33 Lbs.



ROD EXTENSION WITH COUPLING

- Power hub anchor rod and coupling are assembled at the factory
- Used with solid hub or socket drive power hub screw anchors
- One part number for both the rod and coupling simplifies material handling
- All parts hot-dip galvanized
- U.S. made versions available

5/8" Diameter - 16,000 Lbs. Ultimate Tensile Strength

Part Number	Length	Carton Qty	Carton Weight
D6231/2C	3½'	5	20 Lbs.
D62C	7'	5	35 Lbs.

3/4" Diameter - 23,000 Lbs. Ultimate Tensile Strength

Part Number	Length	Carton Qty	Carton Weight
D7531/2C	3½'	5	28 Lbs.
D75C	7'	5	51 Lbs.

1" Diameter - 36,000 Lbs. Ultimate Tensile Strength

Part Number	Length	Carton Qty	Carton Weight
D10031/2C	3½'	2	18 Lbs.
D100C	7'	2	28 Lbs.

EYENUT ONLY

- Used with power hub rods for solid hub or socket drive power hub screw anchors
- All parts hot-dip galvanized

5/8" Diameter - 16,000 Lbs. Ultimate Tensile Strength

Part Number	EyenuT Type	Carton Size	Carton Weight
D6510A	Single Guy Eye	50	51 Lbs.
D6560A	Double Guy Eye	25	34 Lbs.
D6565	Triple Guy Eye	25	56 Lbs.

3/4" & 1" Diameter - 36,000 Lbs. Ultimate Tensile Strength

Part Number	EyenuT Type	Carton Size	Carton Weight
D6512	Single Guy Eye	25	51 Lbs.
D6562A	Double Guy Eye	25	46 Lbs.
D6567	Triple Guy Eye	25	51 Lbs.



D6510A



D6560A



D6565

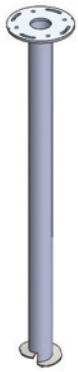
CABINETPILE™ HELICAL PILE FOUNDATION SYSTEM

- Designed for elevated or ground mount applications supporting communications cabinets and equipment
- Exceeds Telcordia GR487 issue 3 requirements for:
 - Compression loading
 - 150 mph hurricane force wind loading
 - Environmentally induced and seismic vibration testing
- Replaces traditional pole mounted brackets and concrete pad mount installations
- CabinetPile™ has:
 - Lower overall installation cost
 - Quicker installation cycle time
 - Single visit installation
 - Meets industry bonding and grounding requirements
- Foundation system consists of:
 - Traditional helical pile with modified top plate to support communications cabinets
 - Custom adapter plate
 - Complete hardware kit
- Consult factory for custom design applications

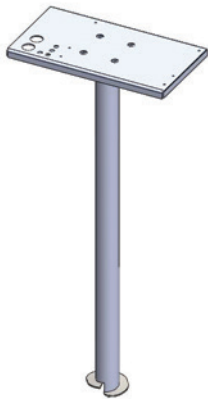
Part Number	Pipe Diameter	Pipe Length	Height Above Grade	Carton Qty	Carton Weight
F06108-ALP248RM	6"	9'	30"	1	240 Lbs.
F10084-ALP248RM	10"	7'	30"	1	249 Lbs.

CABINETPILE™ INSTALLATION TOOL

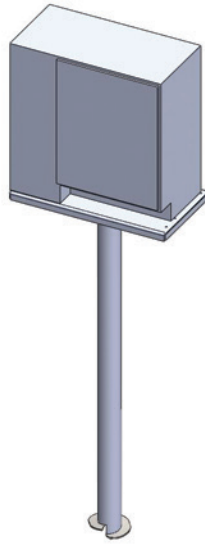
Part Number	Description	Bolt Circle	Bolt Size	Carton Qty	Carton Weight
KB200-914BC	For use with 2" hex kelly bar	9"/14"	1"	1	44 Lbs.
KB250-914BC	For use with 2½" hex kelly bar	9"/14"	1"	1	44 Lbs.
KB263-914BC	For use with 2⅝" hex kelly bar	9"/14"	1"	1	44 Lbs.



Helical Pile with modified top plate



Helical Pile with Custom Adapter Plate



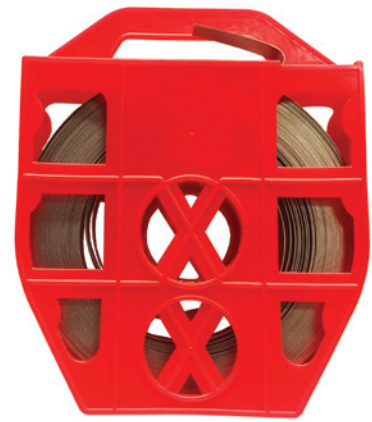
Helical Pile with utility cabinet installed



CabinetPile™ System with optional bollard assembly (parking bumper).

BANDING, STAINLESS STEEL

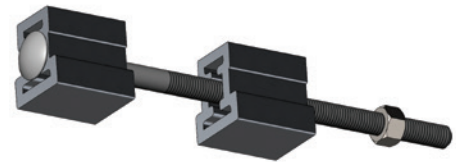
- Allows for quick installation to a wide variety of poles and sizes
- No drilling required on composite, steel or concrete poles
- Forms over any shape pole
- Cut to length allows technicians to adapt installation to any pole diameter
- Stainless steel material for excellent corrosion resistance
- *Supplied in optional durable red plastic carrier for convenience



Part Number	Banding Size	Length (ft.)	SS Grade	Thickness (in.)	Color	Plastic Tote Carrier	Carton Qty.	Carton Weight
SI-SSB-.500-100-201	1/2"	100	201	0.03			5	3 Lbs.
SI-SSB-.500-100-201-R	1/2"	100	201	0.03		Yes	5	3 Lbs.
SI-SSB-.750-100-201	3/4"	100	201	0.03			5	8 Lbs.
SI-SSB-.750-100-201-R	3/4"	100	201	0.03		Yes	5	8 Lbs.
SI-SSB-1.25-100-201	1 1/4"	100	201	0.044			1	19 Lbs.
SI-SSB-.750-100-304	3/4"	100	304	0.03			5	8 Lbs.
SI-SSB-.750-100-304-R	3/4"	100	304	0.03		Yes	5	8 Lbs.
SI-SSB-1.25-100-304	1 1/4"	100	304	0.044			1	19 Lbs.
SI-SSB-.750-100-316BLK	3/4"	100	316	0.03	Black		5	8 Lbs.
SI-SSB-.750-100-316BLK-R	3/4"	100	316	0.03	Black	Yes	5	8 Lbs.

BUCKLE, BOLT STYLE

- Allows for mounting on round, square, or irregular shaped poles without drilling
- Installs in minutes with no special tools required.
- Bolt size 3/8" (MBAB-38) or 5/8" (MBAB-58)



Part Number	Size	Carton Qty	Carton Weight
MBAB-38	3/4"	24	13 Lbs.
MBAB-58	1-1/4"	24	32 Lbs.

BUCKLE, EAR LOCK STYLE

- Used in tandem with banding tool to secure band about pole
- Simple installation
- Crimp closed using hammer
- Constructed of 304 stainless steel

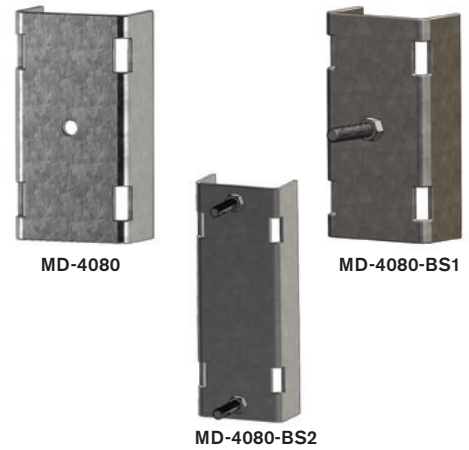
Part Number	Size	SS Grade	Inner Pack Qty	Carton Qty	Carton Weight
SI-ELB-.500-201	1/2"	201	100	500	15 Lbs.
SI-ELB-.750-201	3/4"	201	100	500	19 Lbs.
SI-ELB-1.25-201	1 1/4"	201		25	16 Lbs.
SI-ELB-.750-304	3/4"	304	100	500	19 Lbs.
SI-ELB-1.25-304	1 1/4"	304		25	16 Lbs.
SI-ELB-.750-316	3/4"	316	100	500	19 Lbs.



MOUNT, GENERAL PURPOSE

- Utilized with 1/2", 3/4" or 1 1/4" banding to provide mounting location for equipment and clamps
- Formed from 5" wide x 2 1/2" deep galvanized steel channel

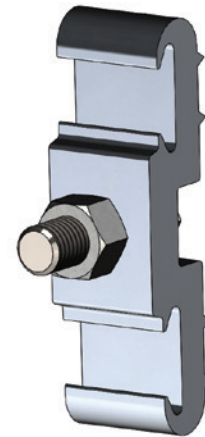
Part Number	Length	Description	Carton Qty	Carton Weight
MD-4080	10"	13/16" Center Mounting Hole	5	34 Lbs.
MD-4080-BS1	10"	Supplied with 5/8" x 3 1/2" Hardware	5	38 Lbs.
MD-4080-BS2	14"	Supplied with (2) 5/8" x 3 1/2" Hardware	5	54 Lbs.



MOUNT, MULTI-PURPOSE

- Utilized with 1/2", 3/4" or 1 1/4" bandings to provide mounting point for suspension clamps and other pole line hardware
- Includes steel bolt and square nut, hot-dip galvanized
- Body constructed of extruded aluminum

Part Number	Description	Bolt Size	Carton Qty	Carton Weight
MHDBB-1511-H	Heavy Duty Mount	5/8" x 2"	24	22 Lbs.
MHDBB-1511-H3H	Heavy Duty Mount	5/8" x 3", Grade 5	24	25 Lbs.
MHDBB-1511-H3.5H	Heavy Duty Mount	5/8" x 3 1/2", Grade 5	24	27 Lbs.



MOUNT, RETAINER, CABLE TIE

- Constructed of aluminum
- Used with 1/2", 3/4" or 1 1/4" banding

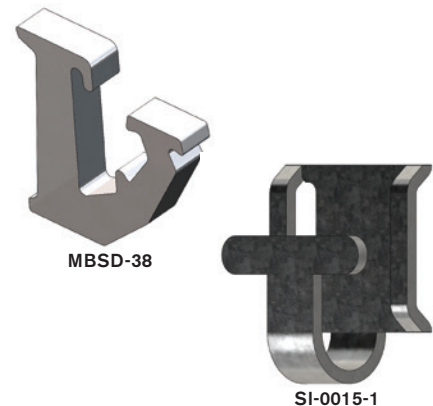
Part Number	Carton Qty	Carton Weight
MCTR	100	3 Lbs.



MOUNT, SERVICE DROP

- Utilized with banding to create a drop attachment point

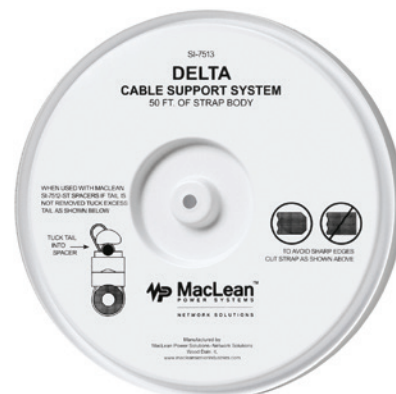
Part Number	Band Size	Material	Carton Qty	Carton Weight
MBSD-38	1/2", 3/4" or 1 1/4"	Aluminum	50	6 Lbs.
SI-0015-1	3/4"	Galvanized Steel	100	16 Lbs.



DELTA CABLE SUPPORT SYSTEM

- Cable support system for attaching communications cable or fiber to a messenger strand
- No sharp edges on strap material
- Quick installation means lower installed cost
- Versatile stackable 1/2" spacer allows for one part to accommodate multiple height requirements
- All parts made of UV stable material

	Part Number	Standard Pack	
		Carton Qty	Inner Pack
50" Strap Coil	SI-7513	10	1
Locking Head	SI-7513-LH	500	25
Stackable Spacer	SI-7512-ST	500	100



Straps

Pre-Cut Assemblies Available

- Pre-cut lengths with a pre-installed locking head are available:

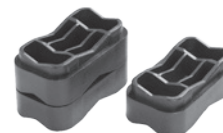
Number SI-7513-XX

XX = length in inches

- Example of most popular options
 - SI-7513-13.5 = 13.5" length
 - SI-7513-27 = 27" length



Locking Heads



1/2" Stackable Spacers

Cross Reference

Manufacturer Trade Name	MSI Delta	Allied Bolt ABStrap	Belden / T&B Deltec
50" Strap Coil	SI-7513	1075	CSS-50R
Locking Head	SI-7513-LH	1072	CSS-LH
Stackable Spacer	SI-7512-ST	1074	CSS-360
Precut 10" with buckle	SI-7513-10	1086	CSS-100
Precut 13.5" with buckle	SI-7513-13.5	1070	CSS-135
Precut 16" with buckle	SI-7513-16	1085	CSS-160
Precut 22" with buckle	SI-7513-22	1087	
Precut 27" with buckle	SI-7513-27	1071	CSS-270
Precut 40" with buckle	SI-7513-40	1088	

'A' CABLE SUSPENSION BOLT

- Constructed of high quality steel, hot-dip galvanized
- Cone points permit easy driving without damage to threads
- Bolts are supplied with two square nuts assembled
- Additional sizes available upon request

Bellcore Specification: 6645

5/8" 'A' Cable Suspension Bolt - Minimum Tensile Strength 13,550 Lbs.

Part Number	Alternate	Size	Carton Qty	Carton Size	Carton Weight
JCA6645.A01	SI-1416-1	5/8" x 8"	50	13" x 8" x 7 1/2"	44 Lbs.
JCA6645.A02	SI-1420-1	5/8" x 10"	50	11 1/2" x 10 1/4" x 5 1/4"	53 Lbs.
JCA6645.A03	SI-1422-1	5/8" x 12"	40	13" x 8 1/4" x 6"	50 Lbs.
JCA6645.A04	SI-1424-1	5/8" x 14"	40	15" x 9" x 6"	54 Lbs.
JCA6645.A05	SI-1426-1	5/8" x 16"	30	17" x 8" x 5"	47 Lbs.
JCA6645.A06	SI-1428-1	5/8" x 18"	25	19 1/4" x 9" x 4 1/2"	43 Lbs.
JCA6645.A07	SI-1430-1	5/8" x 20"	25	21" x 6 1/4" x 4 5/8"	46 Lbs.
JCA6645.A08	SI-1432-1	5/8" x 22"	25	23" x 6" x 5"	49 Lbs.
JCA6645.A09	SI-1434-1	5/8" x 24"	25	26 1/2" x 8" x 7 1/4"	51 Lbs.

3/4" 'A' Cable Suspension Bolt - Minimum Tensile Strength 20,050 Lbs.

Part Number	Alternate	Size	Carton Qty	Carton Size	Carton Weight
JCA6645.A10	SI-1510-1	3/4" x 10"	25	14 1/2" x 8" x 5 1/2"	38 Lbs.
JCA6645.A11	SI-1512-1	3/4" x 12"	25	13 1/2" x 8 1/2" x 6"	46 Lbs.
JCA6645.A12	SI-1514-1	3/4" x 14"	25	15" x 8" x 6"	52 Lbs.
JCA6645.A13	SI-1516-1	3/4" x 16"	20	17 1/4" x 8 1/2" x 4 1/2"	45 Lbs.
JCA6645.A14	SI-1518-1	3/4" x 18"	20	19 1/2" x 10" x 4 1/2"	51 Lbs.

BRACE BOLT

- Brace bolts are used in place of carriage bolts or machine bolts to fasten braces to crossarms
- Integral washer hex head construction provides a static-proof design
- Constructed of high quality steel, hot-dip galvanized
- Minimum tensile strength 4,250 Lbs.
- U.S. made version available

Part Number	Size	Thread Length	Carton Qty	Carton Weight
J8624-1/2	3/8" x 4 1/2"	2"	250	51 Lbs.



MACHINE BOLT

- Constructed of high quality steel, hot-dip galvanized
- Cone points permit easy driving without damage to threads
- Bolts are supplied with one square nut assembled
- Additional sizes available upon request

Bellcore Specification: 6207

3/8" Square Head Machine Bolt - Minimum Tensile Strength 4,250 Lbs.

Part Number	Alternate	Size	Carton Qty	Carton Size	Carton Weight
J8603	SI-1206	3/8" x 3"	250	12" x 8" x 5 1/2"	34 Lbs.
J8604	SI-1208	3/8" x 4"	250	14 1/2" x 8" x 5 1/2"	39 Lbs.
J8604-1/2	SI-1209	3/8" x 4 1/2"	250	12 3/4" x 8" x 7 1/2"	41 Lbs.
J8605	SI-1210	3/8" x 5"	250	12 3/4" x 8" x 8"	43 Lbs.
J8606	SI-1212	3/8" x 6"	250	16 1/4" x 9" x 7"	51 Lbs.
J8608	SI-1214	3/8" x 8"	100	12 1/2" x 8" x 5 1/2"	27 Lbs.
J8610	SI-1216	3/8" x 10"	100	12 1/2" x 8" x 5 1/2"	31 Lbs.

1/2" Square Head Machine Bolt - Minimum Tensile Strength 8,500 Lbs.

Part Number	Alternate	Size	Carton Qty	Carton Size	Carton Weight
J8701-1/2	SI-0044	1/2" x 1 1/2"	250	12 1/2" x 8" x 5 3/4"	45 Lbs.
SI-0045	-	1/2" x 1 3/4"	250	11" x 10" x 4"	47 Lbs.
J8702	SI-1304	1/2" x 2"	250	14 1/2" x 8 1/2" x 6"	48 Lbs.
J8702-1/2	SI-1305	1/2" x 2 1/2"	150	12 1/2" x 8" x 5 3/4"	34 Lbs.
J8703	SI-1306	1/2" x 3"	150	12 1/2" x 8" x 5 1/2"	39 Lbs.
J8704	SI-1308	1/2" x 4"	100	12" x 8" x 7 1/4"	31 Lbs.
J8705	SI-1315	1/2" x 5"	100	12 1/2" x 8" x 5 1/2"	36 Lbs.
J8706	SI-1316	1/2" x 6"	100	12 1/4" x 7 1/2" x 5"	40 Lbs.
J8707	SI-1317	1/2" x 7"	100	14 3/4" x 8 1/4" x 5 1/2"	45 Lbs.
J8708	SI-1318	1/2" x 8"	100	16 1/4" x 9" x 7"	50 Lbs.
J8709	SI-1319	1/2" x 9"	50	12 1/2" x 8" x 9 1/4"	29 Lbs.
J8710	SI-1320	1/2" x 10"	50	12 1/2" x 8" x 5 1/2"	31 Lbs.
J8712	SI-1322	1/2" x 12"	50	14 1/2" x 8" x 5 1/2"	35 Lbs.
J8714	SI-1324	1/2" x 14"	50	16 1/4" x 7" x 7"	39 Lbs.
J8716	SI-1326	1/2" x 16"	50	18 1/2" x 7 1/2" x 7"	46 Lbs.

5/8" Square Head Machine Bolt - Minimum Tensile Strength 13,550 Lbs.

Part Number	Alternate	Size	Carton Qty	Carton Size	Carton Weight
J8801-1/2	-	5/8" x 1 1/2"	150	12 1/2" x 8" x 5 1/2"	46 Lbs.
J8802	-	5/8" x 2"	100	12 1/2" x 8" x 5 1/2"	37 Lbs.
J8802-1/2	-	5/8" x 2 1/2"	100	12 1/2" x 8" x 5 1/2"	39 Lbs.
J8803	-	5/8" x 3"	100	12 1/2" x 8" x 5 1/2"	42 Lbs.
J8804	-	5/8" x 4"	100	12 3/4" x 8" x 7 1/2"	53 Lbs.
J8805	SI-1410	5/8" x 5"	50	12 1/2" x 8" x 5 1/2"	31 Lbs.
J8806	SI-1412	5/8" x 6"	50	12" x 8" x 5 1/4"	34 Lbs.
J8807	SI-1414	5/8" x 7"	50	14 1/2" x 8" x 5 3/4"	38 Lbs.
J8808	SI-1416	5/8" x 8"	50	12 1/4" x 8 1/2" x 7"	42 Lbs.
J8809	SI-1418	5/8" x 9"	50	12 1/2" x 8" x 7 1/2"	46 Lbs.
J8810	SI-1420	5/8" x 10"	50	12 3/4" x 8 1/4" x 7 1/2"	49 Lbs.
J8812	SI-1422	5/8" x 12"	50	14 1/2" x 8" x 7 1/2"	55 Lbs.
J8814	SI-1424	5/8" x 14"	25	16" x 5 1/2" x 5 1/2"	32 Lbs.
J8816	SI-1426	5/8" x 16"	25	17 3/4" x 6 3/4" x 5 1/2"	37 Lbs.
J8818	SI-1428	5/8" x 18"	25	20 1/4" x 7 1/4" x 5 1/4"	40 Lbs.
J8820	SI-1430	5/8" x 20"	25	22 1/2" x 8" x 5 1/2"	44 Lbs.
J8822	SI-1432	5/8" x 22"	25	23 3/4" x 6" x 6 7/8"	48 Lbs.
J8824	SI-1434	5/8" x 24"	25	26" x 9" x 4 1/2"	53 Lbs.
J8826	SI-1436	5/8" x 26"	25	31" x 7 1/2" x 5 1/2"	56 Lbs.
J8828	SI-1438	5/8" x 28"	25	30 3/4" x 8 1/2" x 5 1/4"	61 Lbs.
J8830	-	5/8" x 30"	25	33 1/2" x 7" x 5 1/4"	69 Lbs.



3/4" Square Head Machine Bolt - Minimum Tensile Strength 20,050 Lbs.

Part Number	Alternate	Size	Carton Qty	Carton Size	Carton Weight
J8902	-	3/4" x 2"	100	14 1/2" x 8" x 5 1/2"	53 Lbs.
J8903	-	3/4" x 3"	50	12 1/2" x 8" x 6 1/4"	33 Lbs.
J8906	-	3/4" x 6"	50	15" x 9" x 7"	51 Lbs.
J8908	SI-1508	3/4" x 8"	25	14 1/2" x 8" x 7 1/2"	31 Lbs.
J8910	SI-1510	3/4" x 10"	25	12 1/2" x 8" x 5 1/2"	38 Lbs.
J8912	SI-1512	3/4" x 12"	25	14 3/4" x 8 1/4" x 5 1/2"	43 Lbs.
J8914	SI-1514	3/4" x 14"	25	16 1/4" x 7 3/4" x 7"	48 Lbs.
J8916	SI-1516	3/4" x 16"	25	18 3/4" x 8 1/4" x 6 1/4"	51 Lbs.
J8918	SI-1518	3/4" x 18"	25	20 1/4" x 7 1/4" x 5 1/4"	56 Lbs.
J8920	SI-1520	3/4" x 20"	25	22 1/2" x 8" x 5 1/2"	63 Lbs.
J8922	SI-1522	3/4" x 22"	20	24" x 8 1/2" x 5"	56 Lbs.
J8924	SI-1524	3/4" x 24"	15	26" x 7 1/2" x 4 1/2"	46 Lbs.
J8926	SI-1526	3/4" x 26"	20	31" x 8" x 5 1/2"	65 Lbs.
J8928	-	3/4" x 28"	20	30 1/2" x 8 1/2" x 5"	68 Lbs.

7/8" Square Head Machine Bolt - Minimum Tensile Strength 27,700 Lbs.

Part Number	Size	Carton Qty	Carton Size	Carton Weight
J9062	7/8" x 12"	25	16 1/2" x 8" x 5 1/4"	60 Lbs.
J9064	7/8" x 14"	20	19" x 6 1/2" x 6 3/4"	54 Lbs.
J9066	7/8" x 16"	10	20" x 8" x 4 1/2"	31 Lbs.
J9068	7/8" x 18"	10	20 1/4" x 7 1/4" x 7 1/4"	34 Lbs.
J9070	7/8" x 20"	10	22 1/2" x 8" x 5"	36 Lbs.
J9072	7/8" x 22"	10	25 1/2" x 7 1/2" x 4 1/2"	38 Lbs.
J9074	7/8" x 24"	10	26" x 7 3/4" x 4 1/2"	41 Lbs.
J9076	7/8" x 26"	10	27 1/2" x 6" x 4 1/4"	45 Lbs.



DOUBLE ARMING BOLT

- Constructed of high quality steel, hot-dip galvanized
- Cone points permit easy driving without damage to threads
- Bolts are supplied with four square nuts assembled
- Additional sizes available upon request

Bellcore Specification: 6645

5/8" Double Arming Bolt - Minimum Tensile Strength 13,500 Lbs.

Part Number	Alternate	Size	Carton Qty	Carton Size	Carton Weight
J8860	SI-0910	5/8" x 10"	25	11" x 5 1/2" x 5 1/2"	30 Lbs.
J8862	SI-0912	5/8" x 12"	25	13" x 5 1/2" x 5 1/2"	35 Lbs.
J8864	SI-0914	5/8" x 14"	25	15 1/4" x 5 3/4" x 6 1/4"	38 Lbs.
J8866	SI-0916	5/8" x 16"	25	17 1/4" x 5 3/4" x 6 1/4"	43 Lbs.
J8868	SI-0918	5/8" x 18"	25	19 1/4" x 5 3/4" x 6 1/4"	45 Lbs.
J8870	SI-0920	5/8" x 20"	25	21 1/2" x 6" x 6 5/8"	48 Lbs.
J8872	SI-0922	5/8" x 22"	25	23 3/4" x 6" x 6 7/8"	52 Lbs.
J8874	SI-0924	5/8" x 24"	25	25 3/4" x 6" x 6 7/8"	56 Lbs.
J8876	SI-0926	5/8" x 26"	20	27" x 5 3/4" x 5"	47 Lbs.
J8877	SI-0928	5/8" x 28"	20	29" x 5 1/2" x 5 1/2"	50 Lbs.
J8878	SI-0930	5/8" x 30"	20	31" x 5 3/4" x 5"	55 Lbs.
J8879	SI-0932	5/8" x 32"	20	35" x 8" x 7"	56 Lbs.
J8881	SI-0935	5/8" x 36"	10	36 1/2" x 5" x 2"	32 Lbs.

Bellcore Specification: 6645

3/4" Double Arming Bolt - Minimum Tensile Strength 20,050 Lbs.

Part Number	Alternate	Size	Carton Qty	Carton Size	Carton Weight
J8883	-	3/4" x 10"	25	12 3/4" x 7 3/4" x 7 1/4"	45 Lbs.
J8882	SI-1012	3/4" x 12"	25	15" x 6 1/2" x 6"	49 Lbs.
J8884	SI-1014	3/4" x 14"	25	15 1/4" x 6 1/2" x 6"	54 Lbs.
J8886	SI-1016	3/4" x 16"	25	18 1/4" x 8 1/4" x 5 1/2"	60 Lbs.
J8888	SI-1018	3/4" x 18"	20	19" x 6" x 6"	52 Lbs.
J8890	SI-1020	3/4" x 20"	15	21" x 6" x 5"	43 Lbs.
J8892	SI-1022	3/4" x 22"	15	23" x 6" x 5"	47 Lbs.
J8894	SI-1024	3/4" x 24"	15	25" x 6 1/2" x 5"	50 Lbs.
J8896	SI-1026	3/4" x 26"	15	27" x 6 1/2" x 4 1/2"	54 Lbs.
J8897	SI-1028	3/4" x 28"	15	29" x 6" x 4 1/2"	58 Lbs.
J8898	SI-1030	3/4" x 30"	10	31" x 5" x 2 3/8"	40 Lbs.
J8899	-	3/4" x 32"	10	33" x 5 1/2" x 2 1/2"	39 Lbs.
J9003	-	3/4" x 34"	10	34 1/2" x 5" x 2"	43 Lbs.
J9004	-	3/4" x 36"	10	37" x 5 1/2" x 2 1/2"	52 Lbs.

Bellcore Specification: 6645

7/8" Double Arming Bolt - Minimum Tensile Strength 27,700 Lbs.

Part Number	Size	Carton Qty	Carton Size	Carton Weight
J9112	7/8" x 12"	15	-	43 Lbs.
J9114	7/8" x 14"	15	-	47 Lbs.
J9116	7/8" x 16"	15	17" x 8 1/4" x 4 1/4"	52 Lbs.
J9118	7/8" x 18"	10	19" x 5 1/4" x 5 1/4"	39 Lbs.
J9120	7/8" x 20"	10	21" x 5 1/4" x 5 1/4"	42 Lbs.
J9122	7/8" x 22"	10	23" x 5 1/4" x 5 1/4"	45 Lbs.
J9124	7/8" x 24"	10	25" x 5 1/4" x 5 1/4"	47 Lbs.
J9126	7/8" x 26"	10	27" x 5 1/4" x 5 1/4"	50 Lbs.
J9128	7/8" x 28"	10	29" x 5 1/4" x 5 1/4"	53 Lbs.
J9130	7/8" x 30"	5	30" x 7" x 1 1/2"	28 Lbs.
J9132	7/8" x 32"	5	32" x 7" x 1 1/2"	30 Lbs.
J9134	7/8" x 34"	5	-	32 Lbs.
J9136	7/8" x 36"	5	36" x 7" x 1 1/2"	34 Lbs.
J9138	7/8" x 38"	5	-	35 Lbs.
J9140	7/8" x 40"	5	-	37 Lbs.
J9142	7/8" x 42"	5	-	38 Lbs.



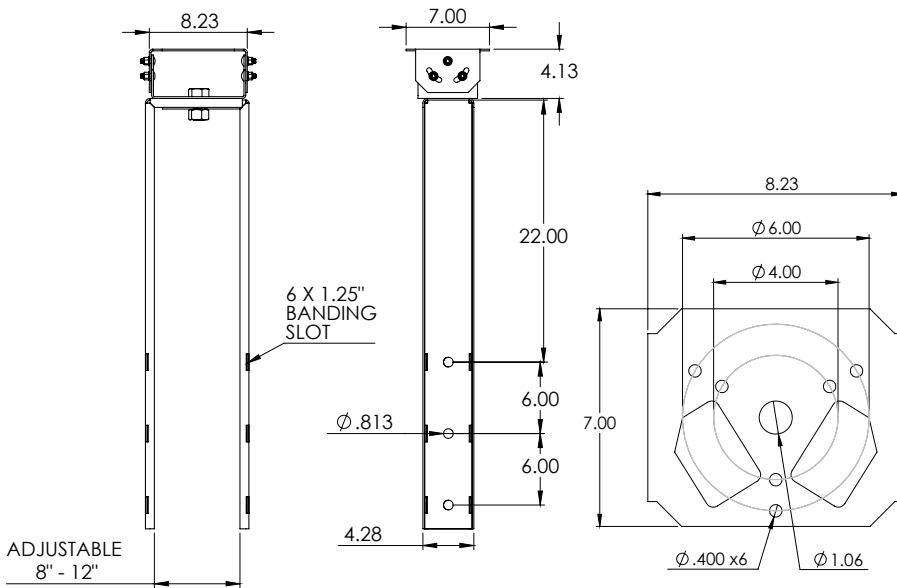
WIRELESS ANTENNA MOUNTING BRACKETS - UAB SERIES

- Mounting brackets to be used in the installation of a wide range of omni directional antennas, including:
 - Commscope
 - Kathrein
 - Amphenol
 - JMA
 - Motorola
- Made from high quality 12 Ga steel, welded construction for high strength
- Black powder coated for excellent corrosion protection
- Mounting configurations range from:
 - Adjustable Pole Top Bracket
 - Pole Top Extension Bracket
 - Offset Bracket

ADJUSTABLE POLE TOP BRACKET

- Installs with the following hardware (not included):
 - 5/8" thru bolts, or
 - Banding straps (up to 1 1/4" size)
- Weight of 25 lbs.
- Rotational capability of 360°
- Pivot capability of +/- 17.5°
- Leg length 36"
 - For alternate leg lengths, replace -36 with required length (in inches)
- Used with pole top diameter ranging from 8" to 12"
- For use with antennas with maximum dimensions of 15" diameter and 24" height, at 140 mph wind speed
 - For antenna applications exceeding these parameters, please consult the factory

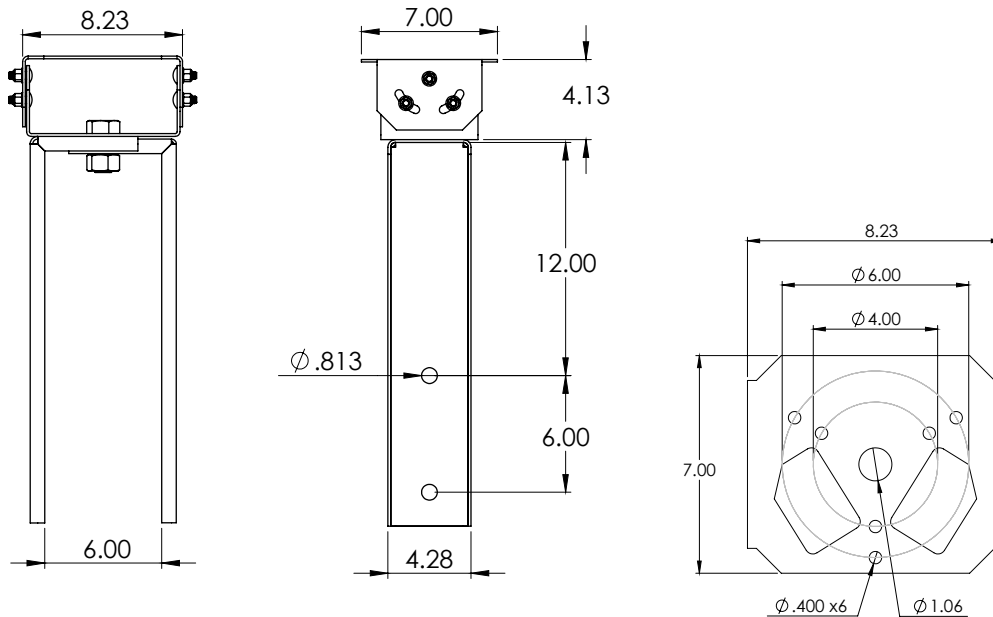
Part Number: SI-UAB-36



POLE TOP EXTENSION BRACKET

- Installs with the following hardware (included):
 - (2) 3/4" x 12" machine bolts
 - (2) 3/4" square nuts
- Weight of 15 lbs.
- Rotational capability of 360°
- Pivot capability of +/- 17.5°
- Designed specifically for use with the MacLean pole top extension
- For use with antennas with maximum dimensions of 15" diameter and 24" height, at 140 mph wind speed
 - For antenna applications exceeding these parameters, please consult the factory

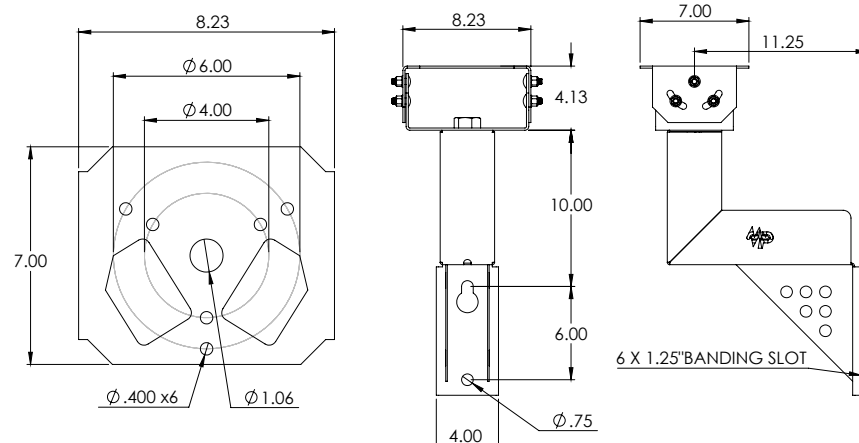
Part Number: SI-UAB-PTE



OFFSET BRACKET

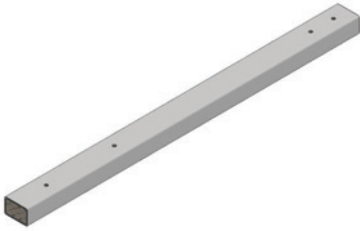
- Installs with the following hardware (included):
 - (2) 5/8" x 10" machine bolts
 - (2) 5/8" square nuts
 - (2) 5/8" x 1 3/4" round washers
- Can be installed with stainless steel banding straps (up to 1 1/4" size)
- Weight of 15 lbs.
- Rotational capability of 360°
- Pivot capability of +/- 17.5°
- Antenna offset of 11 1/4"
- For use with antennas with maximum dimensions of 15" diameter and 24" height, at 140 mph wind speed
 - For antenna applications exceeding these parameters, please consult the factory

Part Number: SI-UAB-11.25-PV



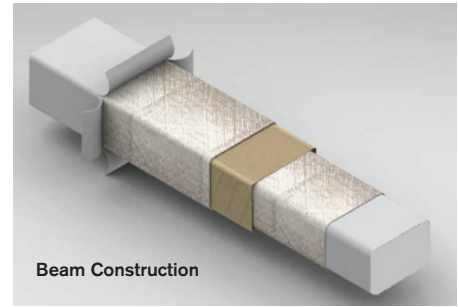
FIBERGLASS EXTENSION ARM

- Used in place of wood timbers for pole top antenna applications
- UV stabilized pultruded fiberglass beam – 4" x 6" cross sectional size, 88" length
- Extensive use of woven and straight fibers for increased strength and reduce deflection
- High density, closed cell, expandable foam core
- Environmentally friendly – no chemicals or preservatives
- Light weight (35 lbs.) – lighter than comparable wood assemblies
- Improves overall system insulation and integrity
- Assembled in the USA
- Available with pre-drilled holes to minimize onsite labor
- Field drillable design for onsite flexibility



Part Number: PZ7.33UTXXX

XXX Denotes various hole drilling patterns available upon request. Consult factory.

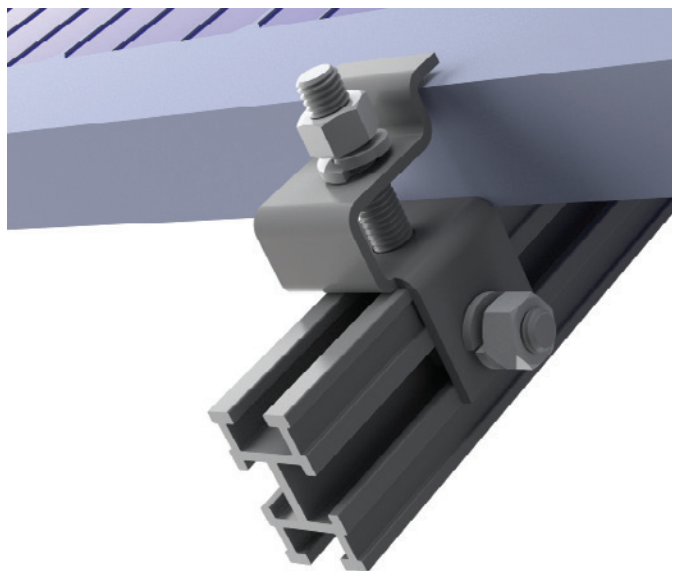


SOLAR PANEL BRACKET

- Fully adjustable bracket for the installation of solar panels (used as battery power supply in traffic and fixed wireless applications)
- Light-weight aluminum construction, less than 40 lbs
- Fully adjustable assembly
 - Utilizes 4-way T-slot extrusion for unlimited configurations
 - Solar panel angle can range from 0 to 90° degrees depending on brace length and allowable pole space
- Versatile clip system allows panels to be positioned and installed without drilling the solar panel
- Can accommodate a wide variety of solar panels sizes
 - Clip system can accommodate panel thickness of 1 1/4" to 1.8"
 - Bracket lengths can be customized to handle a variety of panel sizes and orientations
 - Multiple panel configurations are available
- Wind load testing available
- Bracket can be installed on a variety of different pole types (steel, concrete, fiberglass, and wood) using several installation options:
 - 5/8" threaded hardware
 - Banding up to 1 1/4" size

Part Number: SI-SOLAR-XXXXAL

XXXX Denotes solar panel bracket size



BOND BRAID

Bellcore Specification: 1036

- Used in splicing cable shield openings within pedestal terminals or splice closures
- Flat, tin plated copper braided conductor, 1/2" wide, .070" thick, that provides a low electrical resistance connection
- Equivalent to a number #6 AWG copper conductor
- The braid is strong enough to be effective in relieving the strain across a spliced cable



Part Number	Feet/Reel	Reels/Carton	Carton Size	Carton Weight
SI-7171	100'	5	14" x 14" x 8"	43 Lbs.

BOND BRAID WITH EYELET

- Flat, tin plated copper braided conductor, 1/2" wide, .070" thick, that provides a low electrical resistance connection
- Eyelets are 1/4" diameter and spaced every three inches



Part Number	Type	Feet per Pack	Packs per Carton	Carton Size	Carton Weight
SI-7177-1	Without Web Guard	25'	7	13" x 8" x 8"	21 Lbs.

BONDING HARNESS - #6 AWG

- For bonding and grounding in pedestal new construction and retrofitting
- Colored insulation for multi-directional cable identification
- Ring terminals - standard mounting hole sizes #10 and 1/4"
- Rope-lay cable, tinned copper strands
- Ring terminals - tinned copper alloy, terminate harnesses at each end



Ordering Information

- **Y** in each Part Number denotes three cable type options:

SI-BHA-XXXX Series

427-strand, 7 braid x 61/32 rope-lay cable

SI-BHB-XXXX Series

665-strand, 7 braid x 95/34 rope-lay cable

SI-BHC-XXXX Series

7-strand

- **X** in each Part Number denotes **Color of Insulation** options:
Blank - Black, **OR** - Orange, **BL** - Blue, **BR** - Brown, **SL** - Slate, **GR** - Green, **R** - Red.

Part Number	Insulated/Uninsulated	Cable Length	Ring Type Both Ends	Bundle Qty	Carton Qty	Carton Size	Carton Weight
SI-BHY-6U25	Uninsulated	6"	1/4"	10	500	22" x 8" x 8"	32 Lbs.
SI-BHY-8U25	Uninsulated	8"	1/4"	10	500	22" x 8" x 8"	42 Lbs.
SI-BHY-11U25	Uninsulated	11"	1/4"	10	200	22" x 8" x 8"	22 Lbs.
SI-BHY-12U25	Uninsulated	12"	1/4"	10	200	22" x 8" x 8"	25 Lbs.
SI-BHY-15U25	Uninsulated	15"	1/4"	10	200	22" x 8" x 8"	31 Lbs.
SI-BHY-18U25	Uninsulated	18"	1/4"	10	200	22" x 8" x 8"	39 Lbs.
SI-BHY-20U25	Uninsulated	20"	1/4"	10	200	22" x 8" x 8"	42 Lbs.
SI-BHY-24U25	Uninsulated	24"	1/4"	10	200	25" x 8" x 8"	50 Lbs.
SI-BHY-26U25	Uninsulated	26"	1/4"	10	200	27" x 8" x 8"	54 Lbs.
SI-BHY-30U25	Uninsulated	30"	1/4"	10	200	31" x 8" x 8"	62 Lbs.
SI-BHY-36U25	Uninsulated	36"	1/4"	10	200	37" x 8" x 8"	73 Lbs.

DISTRIBUTION CONNECTOR

- Used to provide a solderless connection between ground wires
- Vise-type connectors made of corrosion resistant, high strength bronze
- Fast, easy installation
- Vibration proof connection
- V-grooves properly align the conductors for maximum engagement
- UL and CSA listed

Part NumberConductor Range.....		Bolt Size	Hex (In)	Carton Qty	Carton Size	Carton Weight
	Min.	Max.					
SI-2140	2-#2 SOL	2-2/0 STR	3/8 - 24	9/16	25	6" x 4" x 4"	10 Lbs.
SI-2141	2-#4 SOL	2-#2 STR	5/16 - 24	9/16	250	10" x 10" x 6"	56 Lbs.
SI-2143	2-#1/0 SOL	2-4/0 STR	3/8 - 24	9/16	25	6" x 4 1/2" x 4 1/2"	11 Lbs.



GROUND ROD CLAMP

- Used to provide a solderless connection between a #6 ground wire and a ground rod
- Clamps are constructed of cast bronze
- Available in vibration proof, anti-loosening versions
- UL and CUL listed



Part Number	Type	Vibration Proof/ Anti-Loosening	Ground Rod Diameter	Bolt Hex Size	Conductor Range	Carton Qty	Carton Size	Carton Weight
SI-0038	Heavy Duty	No	5/8"	1/2"	#10 SOL - #1/0 STR	400	10" x 9" x 9"	56 Lbs.
SI-0038C	Economy	No	5/8"	1/2"	#10 SOL - #1/0 STR	400	10" x 9" x 9"	42 Lbs.
J8492	Heavy Duty	No	5/8"	1/2"	#8 SOL - #1/0 STR	400	5 1/4" x 4" x 4 3/4"	49 Lbs.
SI-0038CN	Economy	Yes	5/8"	1/2"	#10 SOL - #1/0 STR	400	11" x 10" x 6"	42 Lbs.
SI-0038N	Heavy Duty	Yes	5/8"	1/2"	#10 SOL - #1/0 STR	300	10" x 9" x 6"	42 Lbs.
SI-2142	Heavy Duty	No	5/8"	9/16"	#12 SOL - #6 SOL	25	6" x 4" x 4"	11 Lbs.
SI-2142-3G	3 Ground Points	No	5/8"	9/16"	#12-6 SOL-#14-6 SOL or STR	25	6" x 4" x 4"	13 Lbs.
J8493	Heavy Duty	No	3/4"	1/2"	#8 SOL - #1/0 STR	400	10 1/2" x 10 1/2" x 11"	53 Lbs.
J25932	Heavy Duty	No	5/8"	9/16"	#10 SOL - #2 SOL	100	6" x 6 1/4" x 6 1/4"	19 Lbs.

Note - J25932 is constructed of ductile iron, hot-dip galvanized, with a stainless steel hex-head bolt.

COMPRESSION LUGS

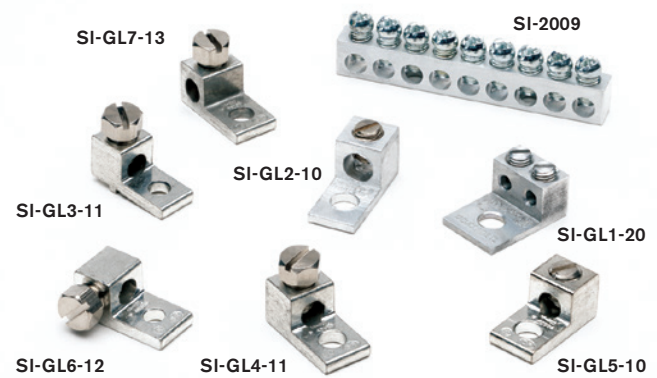
- Constructed of premium, high conductivity copper, electro-tin plated
- Optimal material ductility provides secure crimp with superior tension and pull out resistance
- Wire range of #8 - 4/0 to meet all Telecommunications applications
- Color coded for easy identification of corresponding wire sizes
- 1 and 2 hole lug configurations for attachment to common stud sizes.
- Multiple bend angles, including 45° and 90°
- Available in standard, long and short barrel lengths
- Available with inspection window to confirm wire insertion
- Narrow tongue options available.
- Compatible with industry standard compression tools and crimp dies
- Made in the U.S.A.
- Meets or exceeds UL 486A and ANSI C119.4 requirements



MSI stocks hundreds of different compression lugs, please contact us with your compression lug requirements.

GROUND LUGS

- For mechanically bonding ground wire to equipment or satellite dish installations
- Set screw can be easily installed using a flat head screwdriver or if hex head using the SI-7195 can wrench
- UL and CUL listed



Part Number	Type	Material	Bonding Screw	Conductor Range	Mtg. Hole	Set Screw	Package Qty	Carton Qty	Carton Size	Carton Weight
SI-GL1-20	Dual Barrel	Aluminum	Top	#17 - #10	17/64"	2 slotted	50	500	11" x 5" x 6"	8 Lbs.
SI-GL2-10	Single	Aluminum	Top	#14 - #6	17/64"	1 slotted	500	3000	17" x 10 1/2" x 11 1/2"	47 Lbs.
SI-GL3-11	Single Bottom Tab	Tinned Bronze	Top	#14 - #4	13/64"	hex	250	1000	12 1/2" x 8" x 8 1/2"	45 Lbs.
SI-GL4-11	Single	Tinned Bronze	Top	#14 - #4	17/64"	hex	250	1000	12 1/2" x 8" x 8 1/2"	50 Lbs.
SI-GL5-10	Single	Tinned Bronze	Top	#14 - #4	17/64"	1 slotted	250	1000	12 1/2" x 8" x 8 1/2"	50 Lbs.
SI-GL6-12	Single	Tinned Bronze	Side	#14 - #4	13/64"	hex	100	1000	12 1/2" x 8" x 8 1/2"	49 Lbs.
SI-GL7-13	Single	Tinned Bronze	Top with side grd.	#14 - #4	17/64"	hex	250	1000	12" x 9" x 8"	49 Lbs.
SI-2009	Nine Termination	Tinned Aluminum	Top	#14 - #4	3/16"	slotted	20	500	13" x 7" x 5"	37 Lbs.

SPLIT BOLTS

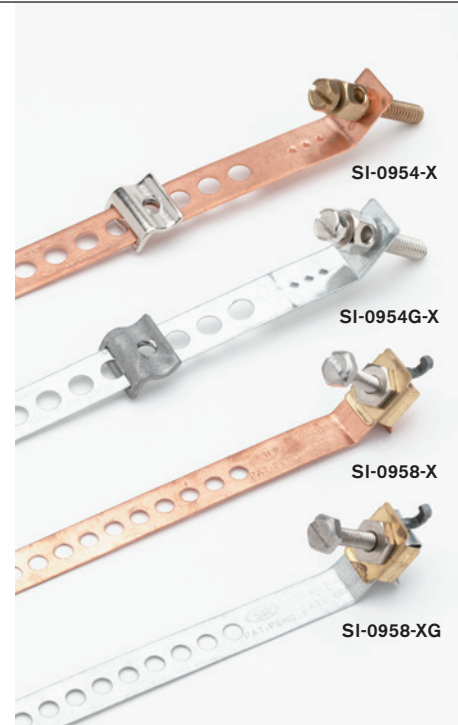
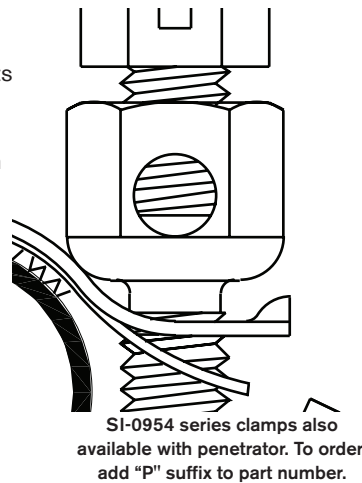
- High strength corrosion resistant copper alloy connectors for use in bonding applications
- Designed to provide high clamping force
- Split bolt will accept on any combination of two conductors shown in the chart below
- UL and CUL listed

Part Number	Size	Range of Equal Main and Tap		Min. Tap with One Max. Main	Package Qty	Package Weight	Carton Qty	Carton Weight
		Min.	Max.					
SI-2002	2	#6 SOL	#2 STR	#14 STR	50	10 Lbs.	400	44 Lbs.
SI-2004	4	#8 SOL	#4 SOL	#16 SOL	100	7 Lbs.	800	53 Lbs.
SI-2006	6	#10 SOL	#6 SOL	#16 SOL	100	5 Lbs.	800	40 Lbs.
SI-2008	8	#16 STR	#8 STR	#16 STR	200	6 Lbs.	1600	47 Lbs.



UNIVERSAL GROUND STRAP

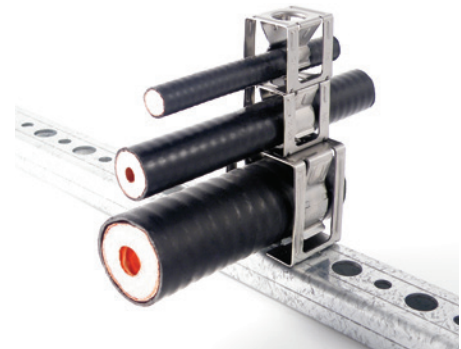
- Positive grounding connection to water pipes, electrical conduits & ground rods
- Features new captive nut, which prevents loss of nut during installation
- Features patented curved nut, which gives a more reliable, secure connection to pipe
- Set-screw stud assembly is compatible with a standard terminal wrench
- Set-screw stud assembly allows ground wire changes without loosening clamp
- Available in 6, 9, or 12 inch lengths with copper or galvanized steel straps
- Available with a penetrator option to ensure a positive, reliable ground
- SI-0954 Premium type ground straps accommodate up to #6 AWG
- SI-0958 Economy type ground straps accommodate up to #8 AWG
- SI-0954E Economy type ground straps accommodate up to a #10 AWG
- UL and CUL listed
- Patented



Part Number	Type	Strap Material	Strap Length	Pipe Size Dia. (In)	Package Qty	Carton Qty	Carton Size	Carton Weight
SI-0954-6	Premium	Copper	6"	1/2" - 1"	25	100	4 1/4" x 4 1/4" x 12"	2 Lbs.
SI-0954-9	Premium	Copper	9"	1/2" - 2 1/4"	25	100	4 1/4" x 4 1/4" x 12"	3 Lbs.
SI-0954-12	Premium	Copper	12"	1/2" - 3"	25	100	4 1/4" x 4 1/4" x 12"	4 Lbs.
SI-0954G-6	Premium	Galvanized Steel	6"	1/2" - 1"	25	100	4 1/4" x 4 1/4" x 12"	2 Lbs.
SI-0954G-9	Premium	Galvanized Steel	9"	1/2" - 2 1/4"	25	100	4 1/4" x 4 1/4" x 12"	3 Lbs.
SI-0954G-12	Premium	Galvanized Steel	12"	1/2" - 3"	25	100	4 1/4" x 4 1/4" x 12"	4 Lbs.
SI-0958-6	Economy	Copper	6"	1/2" - 1"	10	100	18" x 16" x 14"	5 Lbs.
SI-0958-9	Economy	Copper	9"	1/2" - 2 1/4"	10	100	18" x 16" x 14"	6 Lbs.
SI-0958-12	Economy	Copper	12"	1/2" - 3"	10	100	18" x 16" x 14"	7 Lbs.
SI-0958-6G	Economy	Galvanized Steel	6"	1/2" - 1"	10	100	18" x 16" x 14"	5 Lbs.
SI-0958-9G	Economy	Galvanized Steel	9"	1/2" - 2 1/4"	10	100	18" x 16" x 14"	6 Lbs.
SI-0958-12G	Economy	Galvanized Steel	12"	1/2" - 3"	10	100	18" x 16" x 14"	7 Lbs.
SI-0954E-6	Economy	Copper	6"	1/2" - 1"	25	100	4 1/4" x 4 1/4" x 12"	2 Lbs.
SI-0954E-9	Economy	Copper	9"	1/2" - 2 1/4"	25	100	4 1/4" x 4 1/4" x 12"	3 Lbs.
SI-0954E-12	Economy	Copper	12"	1/2" - 3"	25	100	4 1/4" x 4 1/4" x 12"	4 Lbs.
SI-0954E-6G	Economy	Galvanized	6"	1/2" - 1"	25	100	4 1/4" x 4 1/4" x 12"	2 Lbs.
SI-0954E-9	Economy	Galvanized	9"	1/2" - 2 1/4"	25	100	4 1/4" x 4 1/4" x 12"	3 Lbs.
SI-0954E-12	Economy	Galvanized	12"	1/2" - 3"	25	100	4 1/4" x 4 1/4" x 12"	4 Lbs.

CABLE MANAGEMENT

- A snap-in style clamp that allows for quick and stable attachment of cable to a variety of structures and towers
- Made from high grade AISI 301 Stainless Steel for long life
- Square body design for more stable application with greater surface area contact with the tower/structure
- Separate clamping of cable easy to install/remove; does not pinch the cable
- 4 prong attachment to structure for a more secure connection
- Stack up to 4 high without need for reinforcement bar

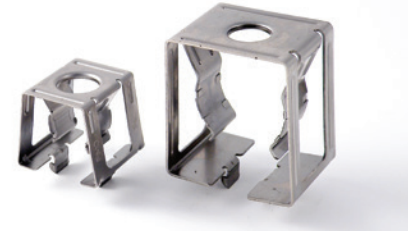


Installation

- The stainless-steel clamp secures the cable and snaps into a 3/4" hole in the structure
- A series of optional cushions offer a wide range of capability

Part Number	Description	Standard Park
SI-6936-8	Stackable Snap In Hangers 1/2"	100
SI-6936-14	Stackable Snap In Hangers 7/8"	100
SI-6936-20	Stackable Snap In Hangers 1 1/4"	100
SI-6936-26	Stackable Snap In Hangers 1 5/8"	100

For PIM complaint non-metallic clamp, consult factory for details.



Part Number	Description	Standard Park
SI-6936-3T	3 Way Bracket	100



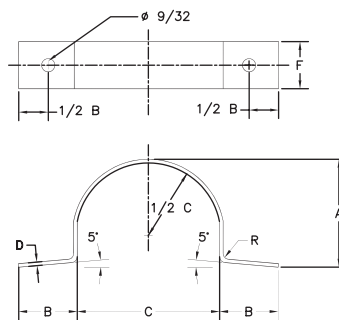
Part Number	Description	Standard Park
SI-6936-8-C1	Cushion Insert - 1/4" to 5/16"	100
SI-6936-8-C2	Cushion Insert - 1 1/32" to 3/8"	100
SI-6936-14-C1	Cushion Insert - 7/16" to 15/32"	100
SI-6936-14-C2	Cushion Insert - 1/2" to 19/32"	100
SI-6936-14-C3	Cushion Insert - 5/8" to 1 1/16"	100
SI-6936-26-C1	Cushion Insert - 3/4" to 1 3/16"	100
SI-6936-26-C2	Cushion Insert - 1 3/16" to 1 1/2"	100



CABLE STRAP

Bellcore Specification: 6344

- Used to secure cable, pipe and conduit to various surfaces
- Constructed of high quality steel, mechanically plated



Part Number	Dimensions					Package Qty	Carton Qty	Carton Size	Carton Weight
	(A)	(B)	(C)	(F)	(R)				
SI-6344-9	13/32"	5/8"	9/16"	5/8"	3/32"	25	1000	14" x 10" x 8"	22 Lbs.
SI-6344-11	9/16"	3/4"	1 1/16"	5/8"	1/8"	25	1000	14" x 10" x 8"	20 Lbs.
SI-6344-13	1 1/16"	3/4"	1 3/16"	3/4"	1/8"	25	1000	14" x 10" x 8"	28 Lbs.
SI-6344-16	7/8"	7/8"	1"	3/4"	3/16"	25	500	14" x 10" x 8"	26 Lbs.
SI-6344-20	1 1/16"	1"	1 1/4"	3/4"	3/16"	25	500	14" x 10" x 8"	35 Lbs.
SI-6344-24	1 5/16"	1"	1 1/2"	3/4"	3/16"	25	500	14" x 10" x 8"	35 Lbs.
SI-6344-30	1 5/8"	1 1/8"	1 7/8"	7/8"	1/4"	25	200	14" x 10" x 8"	20 Lbs.
SI-6344-36	2"	1 1/8"	2 1/4"	7/8"	1/4"	25	200	14" x 10" x 8"	28 Lbs.
SI-6344-42	2 3/8"	1 1/8"	2 5/8"	7/8"	1/4"	25	100	14" x 10" x 8"	16 Lbs.
SI-6344-56	3"	1 1/4"	3 1/2"	1"	3/8"	25	100	14" x 10" x 8"	26 Lbs.
SI-6344-64	3 1/2"	1 1/4"	4"	1"	3/8"	25	100	14" x 10" x 8"	25 Lbs.

PLASTIC CABLE GUARDS

- Constructed of gray color UV stabilized, high-impact resistant PVC
- Strong, light weight, maintenance-free means of cable protection
- Non-Conductive and Flame Retardant
- Offered with belled end to facilitate overlap joints
- Flanged construction can be mounted with 1½" x 10 Ga. neoprene washer head nails or ¼" x 2" hex head lag screw with neoprene backed steel washer (See following)
- Made in the USA of recycled material

Schedule 30 Construction

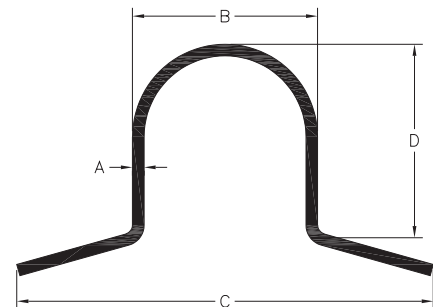
Part Number	Size	Length	A	B	C	D	Standard Qty
SI-UG.510-30	½"	10"	1/16"	9/16"	1 ¼"	9/16"	1400
SI-UG110-30	1"	10"	1/16"	1 ¼"	3"	1 1/16"	490
SI-UG208-30	2"	8"	1/8"	2 3/8"	4 ½"	2 3/8"	300
SI-UG210-30	2"	10"	1/8"	2 3/8"	4 ½"	2 3/8"	300
SI-UG308-30	3"	8"	1/8"	3 ½"	6"	3 ½"	150
SI-UG310-30	3"	10"	1/8"	3 ½"	6"	3 ½"	150
SI-UG408-30	4"	8"	1/8"	4 ½"	6 ½"	4 ½"	100
SI-UG410-30	4"	10"	1/8"	4 ½"	6 ½"	4 ½"	100
SI-UG508-30	5"	8"	1/8"	5 ½"	7 ½"	5 ½"	80
SI-UG510-30	5"	10"	1/8"	5 ½"	7 ½"	5 ½"	80

Schedule 40 Construction

Part Number	Size	Length	A	B	C	D	Standard Qty
SI-UG210-40	2"	10"	1/8"	2 3/8"	4 ½"	2 3/8"	300
SI-UG310-40	3"	10"	3/16"	3 ½"	6"	3 ½"	150
SI-UG410-40	4"	10"	1/4"	4 ½"	6 ½"	4 ½"	100
SI-UG510-40	5"	10"	1/4"	5 ½"	7 ½"	5 ½"	70
SI-UG610-40	6"	10"	1/4"	6 ½"	8 ½"	6 ½"	28

Schedule 80 Construction

Part Number	Size	Length	A	B	C	D	Standard Qty
SI-UG210-80	2"	10"	3/16"	2 3/8"	4 ½"	2 3/8"	200
SI-UG310-80	3"	10"	5/16"	3 ½"	6"	3 ½"	200



HEX HEAD LAG SCREW WITH NEOPRENE BACKED STEEL WASHER

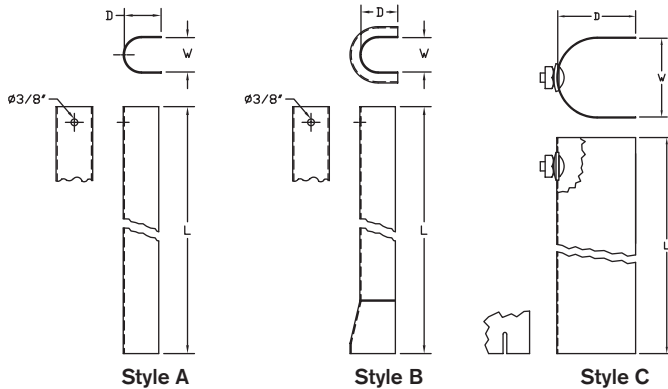
- Hex head lag screws with steel/neoprene washers are ideal to secure plastic U-cable guards
- 9/16" steel washer is bonded with a neoprene washer on one side to provide a cushion between the plastic cable guard and the lag screw
- Lag screws have 7/16" hex heads and gimlet points/threads
- Constructed of high quality carbon steel to resist bending
- J26486.1 and J26486.2 hot-dip galvanized
- SI-6038 electro-zinc plated



Part Number	Alternate	Size	Carton Qty	Carton Weight
SI-6038	J26486.1	¼" x 2"	500	25 Lbs.
J26486.2		¼" x 2 ½"	500	21 Lbs.

STEEL CABLE GUARD

- Cable guards are used to protect power and telephone cable at riser installations
- Offers maximum protection to cable against collisions and vandalism
- Inexpensive strap-mounted style uses lag screws to secure to pole
- Guards without frustrum can be used as extensions to attain any desired height on the pole
- Carriage bolt assembly is furnished on style "C" to fasten extensions and serve as a ground lead attachment
- Constructed of high quality steel, hot-dip galvanized

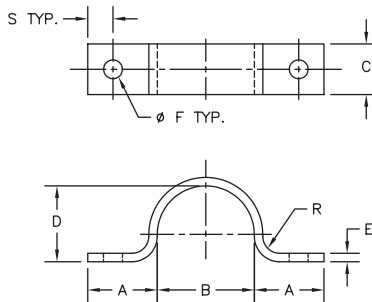


Part Number	Guard Style	Steel Gage	Length	Depth	Width	Strap PN	Carton Qty	Carton Weight
J985	A	14	5'	1 1/8"	1 1/8"	J995	5	21 Lbs.
J984	A	14	8'	1 1/8"	1 1/8"	J995	5	36 Lbs.
J991	B	14	8'	1 5/16"	1 1/4"	J995	5	36 Lbs.
J987	A	14	8'	2 3/16"	2 3/16"	J996	5	76 Lbs.
J989	A	14	8'	3 3/16"	3 3/16"	J997	2	35 Lbs.
J23395.8	C	14	8'	3 3/16"	3 3/16"	J997	2	37 Lbs.

CABLE GUARD STRAP

Bellcore Specification: 6789

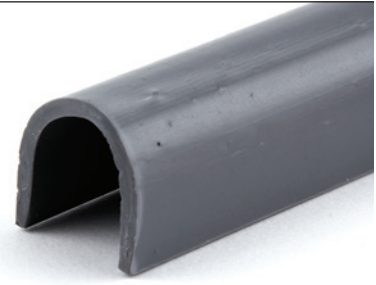
- Constructed of high quality steel, hot-dip galvanized
- Used in securing U-cable guards to poles



Part Number	Dimensions									Package Qty	Carton Qty	Carton Size	Carton Weight
	(A)	(B)	(C)	(D)	(E)	(F)	(R)	(S)					
SI-0075	1 1/32"	1 7/16"	3/4"	1 1/8"	1/8"	9/32"	1/4"	3/8"	25	200	11" x 10" x 6"	23 Lbs.	
SI-0076	1 1/32"	1 1/2"	3/4"	1 7/16"	1/8"	9/32"	3/8"	3/8"	25	300	14" x 10" x 8"	42 Lbs.	
SI-0077	1 1/32"	2 3/8"	3/4"	2 5/16"	1/8"	9/32"	3/8"	3/8"	25	100	14" x 14" x 6"	25 Lbs.	
SI-0078	1 5/16"	2 3/8"	1"	3 5/16"	3/16"	1 1/32"	3/8"	1/2"	25	25	8" x 6" x 6"	12 Lbs.	
SI-0079	1 5/16"	3 7/8"	1"	3 13/16"	3/16"	1 1/32"	3/8"	1/2"	25	25	8" x 6" x 6"	19 Lbs.	
J995	1 1/32"	1 1/2"	3/4"	1 7/16"	1/8"	9/32"	3/8"	3/8"	-	250	16 1/4" x 9" x 7"	36 Lbs.	
J996	1 1/32"	2 3/8"	3/4"	2 5/16"	1/8"	9/32"	3/8"	3/8"	-	200	17 1/2" x 9" x 9 1/2"	41 Lbs.	
J997	1 5/16"	3 3/8"	1"	3 5/16"	3/16"	1 1/32"	3/8"	1/2"	-	50	17 1/2" x 9" x 9 1/2"	31 Lbs.	

PLASTIC GROUND WIRE MOLDING

- Plastic ground wire molding provides strong, reliable protection of exposed ground wire.
- Low maintenance, safety, handling ease and low cost
- Easily secured to the pole with available diamond point staples or square shank, barbed staples
- Constructed of U-shaped, high impact resistant, UV stabilized PVC
- U.S. made version available



Part Number	Description	Carton Qty	Carton Weight
SI-GWM.5-96G	1/2" x 1/2" x 8', long, gray	100	33 Lbs.
SI-GWM.5-96BL	1/2" x 1/2" x 8', long, black	100	33 Lbs.
PM128	1/2" x 1/2" x 8', long, gray	125	41 Lbs.

HOOKS

DRIVE HOOK

Bellcore Specification: 7365

- Used for securing drop wire attachments and service drops
- Rolled fether drive threads and pilot point for easy starting
- Constructed of high quality steel, hot-dip galvanized

Part Number	Size	Carton Qty	Carton Size	Carton Weight
J3316P	7/16" x 4 3/4"	200	16 1/2" x 8 1/2" x 7 1/2"	53 Lbs.
SI-3000*	7/16" x 4 3/4"	200	9" x 9" x 7"	53 Lbs.
J3318	5/16" x 3 1/2"	500	16 1/4" x 9" x 7"	58 Lbs.
SI-3001*	5/16" x 3 1/2"	400	11" x 11" x 7 1/2"	55 Lbs.
J8245	1/2" x 5 7/8"	100	14 1/2" x 8" x 7 1/2"	41 Lbs.

* - Indicates mechanically plated finish

Note: J8245 has rolled 1/2" threads and includes a square nut, bolts through a wooden cross arm for deadending telephone services



CONCAVE MF LOCKNUT

- When the arched surface contacts the top of the common nut or bearing surface, wrenching flattens the arch, deflecting the nut
- Deflects threads from their true helix causing them to firmly grip the bolt threads
- The nut takes a permanent set and must be wrenched for further movement
- Free-spinning square locknut that starts freely from either side and spins into place with fingers

- 1/2 to a full turn with a wrench will lock it securely
- Constructed of high quality steel, hot-dip galvanized

Part Number	Bolt Diameter	Carton Qty	Carton Weight
J8581	3/8"	3,000	61 Lbs.
J8582	1/2"	1,500	47 Lbs.
J8583	5/8"	800	33 Lbs.
J8584	3/4"	550	34 Lbs.
J8584-1/2	7/8"	400	34 Lbs.



J8581

SQUARE NUT

Bellcore Specification: 6445

- Manufactured in accordance with ANSI Specifications B18.2.2 and tapped Unified National Coarse Threads Series Class 2B after centrifugal hot-dip galvanizing, oversize for galvanized bolts and rods
- Considered safest to use by utility linemen

- Large wrenching surface
- Regular square nuts are used on all types of threaded bolts and insulator pins
- Heavy square nuts are used exclusively on anchor rods
- Constructed of high quality steel, hot-dip galvanized

Part Number	Alternate	Size	Carton Qty	Carton Size	Carton Weight
SI-5362		5/16"	500	6" x 4" x 4"	8 Lbs.
SI-5363		3/8"	500	6" x 4" x 4"	12 Lbs.
	J8561	3/8"	2500	12 3/4" x 8" x 7 1/2"	58 Lbs.
SI-5364		1/2"	500	7" x 7" x 5"	26 Lbs.
	J8562	1/2"	1000	14 1/2" x 8" x 5 1/2"	52 Lbs.
SI-5365		5/8"	250	7" x 7" x 5"	24 Lbs.
	J8563	5/8"	500	12 5/8" x 8 1/8" x 7 3/8"	52 Lbs.
SI-5366		3/4"	250	8" x 8" x 6"	31 Lbs.
	J8564	3/4"	250	12 1/2" x 8" x 5 1/2"	31 Lbs.
J8564-1/2		7/8"	200	10 1/2" x 10 1/2" x 6"	26 Lbs.



FIBERGLASS POLE TOP EXTENSION

- Ideal solution when pole replacement is costly and time sensitive. Other uses include: Overbuild construction utilizing spacer cable and armless and crossarm construction, and Wireless 5G communication antennas.
- Proven performance since 1973, over 50,000+ in the field.
- Exceeds strength requirement for Class 2-10 wood poles (testing per ANSI 05.1-2015)
- Available in any length from 36" to 120"
- Holes drilled per customer specifications or can be field drilled
- Available with Ridge pin provision on cap or solid cap
- Filament wound epoxy tube, UV resistant and brown in color, excellent weatherability
- Galvanized steel base which accommodates pole diameters from 6": to 12"
- Variety of mounting brackets available

Length	Maximum Loading (LBF)			Weight (LB)
	Longitudinal	Transverse	Vertical	
48"	5,250	4,450	10,000	63
54"	4,200	3,550	10,000	67
60"	3,500	2,950	10,000	70
72"	2,600	2,200	10,000	77
92"	1,850	1,550	10,000	89
120"	1,300	1,100	10,000	105

Note: Maximum loading figures are applied 24" below top of extension. Weights are approximate, contact your local representative for details specific to each application.



Part Number

- | | |
|----------------|---|
| HL-44B 58-3031 | Undrilled |
| HL-44B 58-3093 | Predrilled for use with Pole Top Extension Bracket SI-UAB-PTE. See page WP17. |
| HL-44B 58-XXXX | XXXX Denotes custom hole drilling patterns available. Consult factory. |



ROUND WASHER

- Constructed of high quality steel, hot-dip galvanized

Bellcore Specification: 6150

Part Number	Hole Diameter	Outside Diameter	Thickness	Carton Qty	Carton Size	Carton Weight
SI-9023	3/16"	9/16"	0.047"	100	2" x 2" x 2"	6 Lbs.
SI-9024	1/4"	3/4"	0.063"	6400	12" x 9" x 5"	40 Lbs.
SI-9061	3/8"	1"	0.083"	2500	14" x 10" x 8"	31 Lbs.
J1084	7/16"	1"	0.083"	2500	9 1/2" x 9 1/2" x 7 1/2"	51 Lbs.
SI-9063	1/2"	1 3/8"	0.125"	200	6" x 4" x 4"	8 Lbs.
J1086	9/16"	1 3/8"	0.109"	1000	8 1/2" x 8 1/4" x 6 1/2"	28 Lbs.
SI-9064	5/8"	1 3/4"	0.156"	200	6" x 4" x 4"	9 Lbs.
J1088	1 1/16"	1 3/4"	0.134"	500	9" x 9" x 6"	31 Lbs.
SI-9065	3/4"	2"	0.156"	100	4" x 4" x 4"	11 Lbs.
J1089	1 3/16"	2"	0.148"	500	10" x 10" x 7"	51 Lbs.



SINGLE COIL, SPRING LOCK WASHER

- Designed to ensure a tight fit by keeping the bolt and nut assembly in tension
- Constructed of high quality spring steel
- U.S. made versions available

Part Number	Size Section	For Bolt Diameter	Carton Qty	Carton Weight	Finish
J134	.141" x .094"	3/8"	5000	37 Lbs.	Hot-dip galvanized
SI-900	.141" x .094"	3/8"	5000	40 Lbs.	Zinc electro plate
J138	.171" x .125"	1/2"	2500	27 Lbs.	Hot-dip galvanized
SI-901	.171" x .125"	1/2"	2500	40 Lbs.	Zinc electro plate
J139	.203" x .156"	5/8"	2000	41 Lbs.	Hot-dip galvanized
SI-921	.203" x .156"	5/8"	2500	68 Lbs.	Zinc electro plate
J140	.234" x .188"	3/4"	1000	41 Lbs.	Hot-dip galvanized
SI-903	.234" x .188"	3/4"	1000	46 Lbs.	Zinc electro plate



DOUBLE COIL, SPRING LOCK WASHER

- Designed to compensate for wood shrinkage to help eliminate interference caused by loose hardware
- Constructed of high quality spring steel

Part Number	Size Section	For Bolt Diameter	Carton Qty	Carton Weight	Finish
J175	.141" x .094"	3/8"	3000	31 Lbs.	Hot-dip galvanized
J176	.171" x .125"	1/2"	1500	43 Lbs.	Hot-dip galvanized
J177	.203" x .156"	5/8"	750	39 Lbs.	Hot-dip galvanized
J178	.234" x .188"	3/4"	500	37 Lbs.	Hot-dip galvanized



SPRING FORMED, STEEL WASHER

- Spring formed steel washers are used to keep units in tension when wood crossarm or wood pole shrinkage occurs
- Designed to enable the nut of a bolt to seat flat on the spring washer surface when it is compressed
- J3539 provides 1/2" of compression, all of the others provide 9/16" of compression
- Constructed of high quality spring steel, hot-dip galvanized



Part Number	Bolt Diameter	Material Size	Formed Length	Carton Qty	Carton Weight
J3539	1/2"	3/16" x 1"	2 7/16"	250	63 Lbs.
J3540	5/8"	1/4" x 1 3/4"	3 3/4"	50	46 Lbs.
J3541	3/4"	1/4" x 1 3/4"	3 3/4"	50	43 Lbs.
J3542	7/8"	1/4" x 1 3/4"	3 3/4"	50	43 Lbs.
J3543	1"	1/4" x 1 3/4"	3 3/4"	50	44 Lbs.

SQUARE FLAT WASHER

- Constructed of high quality steel, hot-dip galvanized

Bellcore Specification: 6150



Part Number	Alternate	Dimensions				Carton Qty	Carton Weight
		Width	Length	Thickness	Hole		
SI-9105		1.89"	1.89"	1/8"	3/4"	500	52 Lbs.
J1073		2"	2"	1/8"	9/16"	300	33 Lbs.
J1074	SI-9102	2"	2"	1/8"	1 1/16"	300	34 Lbs.
J1075	SI-9103	2 1/4"	2 1/4"	3/16"	1 1/16"	200	44 Lbs.
J1076	SI-9104	2 1/4"	2 1/4"	3/16"	1 3/16"	200	45 Lbs.
J1078	SI-9106	3"	3"	3/16"	1 3/16"	100	46 Lbs.
J1079		3"	3"	1/4"	1 3/16"	50	32 Lbs.
J1080		4"	4"	3/16"	1 3/16"	50	44 Lbs.
J1082		4"	4"	1/4"	1 5/16"	50	56 Lbs.
J1081		4"	4"	1/2"	1 1/8"	25	54 Lbs.

SQUARE CURVED WASHER

- Constructed of high quality steel, hot-dip galvanized

Bellcore Specification: 6150



Part Number	Alternate	Dimensions				Carton Qty	Carton Weight
		Width	Length	Thickness	Hole		
SI-9000		2 1/4"	2 1/4"	3/16"	1 1/16"	200	47 Lbs.
	J6821	2 1/4"	2 1/4"	3/16"	1 1/16"	200	53 Lbs.
J6822		2 1/2"	2 1/2"	3/16"	1 1/16"	150	48 Lbs.
SI-9004		3"	3"	1/4"	1 1/16"	100	62 Lbs.
	J113	3"	3"	1/4"	1 1/16"	50	31 Lbs.
J6823		3"	3"	1/4"	1 3/16"	50	31 Lbs.
J133		3 1/4"	3 1/4"	1/4"	1 3/16"	50	37 Lbs.
SI-9010		3 1/2"	3 1/2"	3/8"	7/8"	40	53 Lbs.
J6828		3 1/2"	3 1/2"	3/8"	1 5/16"	25	31 Lbs.
J6829		4"	4"	1/4"	1 5/16"	50	55 Lbs.
J6836		4"	4"	1/4"	1 3/16"	50	56 Lbs.
J6838		4"	4"	3/8"	1 3/16"	25	42 Lbs.

